



2019 Ed's Comments: From the first ever Editor of Focal Point!

It is with great sadness that Winthorpe Village will be losing two friends who have contributed so much to our village community. Annie, Focal Point Editor, McMillan coffee morning supporter and general good egg and her husband, Nick, who writes and plays music as well as being chief of the Scrabble players, are on the move.

We have enjoyed their company and benefitted from their involvement in village life, The holes they leave will be noticeable! We hope that Scrabble will continue, although at a new venue yet to be announced, but more importantly **we need to find a new editor for Focal Point.**

Focal Point was started 38 years ago, to spread village news and support events in the three villages of Langford, Holme and Winthorpe. It relies on a very small team of editor, treasurer, proof reader, advertisers, contributors, the printer and many distributors, to reach every household in the three villages. So far all the editors have been from Winthorpe although there is no reason why this should be the case. The editor, at present Annie Purday, must be the guiding light: enthusiastic and committed to the regular production of the magazine. Annie has done an absolutely brilliant job, developing the first page editorial into a friendly homily. Under her leadership we have enjoyed five years' worth of valuable information always delivered at the beginning of each month. The financial supporters, advertisers and article writers know that their pieces are valued and well presented.

In order that we can achieve a fourth decade of our village magazine we need someone new to show an interest in taking this job forward. It is a way of getting to know people too. If you are at all interested, even if you are uncertain of your ability to do the job, then get in touch with Annie. She will be able to explain how this role is achieved each month. Perhaps you can offer to do part of the publication; do not sit on your hands but help us towards meeting forty years or even five hundred editions. Many thanks to Annie for her dedication. Annie and Nick will be sorely missed.

Lynne Shapley

The closing date for the April issue is **Friday 15th March**

Deliver to Annie and Nick 18, Hargon Lane, Winthorpe
(Tel 01636 658347) or email nickwynne@virginmedia.com

LUNCH CLUB

The **April** Lunch Club will be at 12.30 p.m. on **Monday 1st April** at the Community Centre.

The menu will be:



Baked Ham and Pineapple with a Red Wine Sauce

OR

Fish Cakes with Parsley Sauce



and Seasonal Vegetables

-x-



Lemon Mascarpone Cheesecake

-x- Tea or Coffee

£8 including a glass of wine

Contact Tish Applewhite (643763) if you need to reserve your place and give your choice of menu. Thank you. Tish Applewhite

NB The March Lunch Club is on Monday 4th March as advertised in last month's Focal Point.



IF YOU CARE ABOUT VILLAGE LIFE YOU COULD BE FOCAL POINT EDITOR!

A MESSAGE FROM OUR LOCAL NEIGHBOURHOOD POLICING TEAM

A reminder for dog owners

We've had an issue locally where a farmer's sheep were worried by a dog. The sheep managed to charge down an electric fence and get out onto the road. Please could owners remember to keep dogs on leads when close to other animals. Thank you.



PC 2525 Gareth NICHOLLS

Newark Neighbourhood Policing Team and Wildlife Crime Officer
BNBR and BNBC - Bridge, Yorke Drive, Winthorpe Road Beat and Rural North
(Collingham and surrounding villages)

Newark Police Station

Tel: 101 Ext 809 7616

Mob: 07525 226394

gareth.nicholls@nottinghamshire.pnn.police.uk



Holme Lane Cricket Ground, Winthorpe, NG24 2NU

Come down and join in the fun at your local Cricket club

all skill levels and abilities welcome from 5 years upwards

Contact : coddingtonandwinthorpecc@gmail.com

Phone : 07900 687137

Website : <http://coddington.play-cricket.com/>

facebook.com @ CoddingtonandWinthorpeCricketClub

twitter.com @ codwincc





High Street
Collingham

Newark NG23 7LB

General Enquiries/Emergencies: 01636 892156

Email: collingham.medicalcentre@nhs.net

Drs Fearn, Li, Coulton & Walker

Monday - Friday 8.00am-6.15pm

For Appointments telephone: 01636 893956 8.00am – 6.15pm

For Prescriptions telephone: 01636 892210 10.00am – 12.00pm

In addition to our normal medical services, we can offer:

Child and Adult Immunisations, Well Person Health Checks, Travel Advice, Minor Injuries, Joint Injections and Minor Ops (including cryotherapy)

Our communication with patients relies on current information. If your personal details change, including telephone numbers, please let the practice know. Thank you.

Out of Hours Service is provided from 111 when the surgery is closed.

Website: www.collinghammedicalcentre.co.uk



COLLINGHAM PHARMACY



YOUR local pharmacy dispensing NHS, Private and Veterinary prescriptions.

Offering a wide range of medicines, vitamins, toiletries, pet medicines and seasonal gifts.

NHS Services Include:

- ✓ **Medicine Use Review**
- ✓ **Morning After Pill**
- ✓ **Blood Pressure Measurement**
- ✓ **Minor Ailments Scheme**

High Street, Collingham, Newark, NG23 7LB Tel: 01636 893038

email: collingham.pharmacy@nhs.net

Mon 8.45am-6.30pm Tue-Fri 8.45-6pm Sat 9am-12.30pm Closed 1pm-2pm daily



NEWARK

Tel: [01636 370 822](tel:01636370822)

Email: info@countrykidsnursery.com

Opening times:

Monday to Friday - 07:00 - 18:00

Saturday and Sunday - 08:00 - 16:00

Country Kids Day Nursery

Bridge Children's Centre

Lincoln Road,

Newark

NG24 2DQ

Mother's Day

Mother's Day (31st March this year) belongs to us all whether or not we have had our own children because we have all had a Mother!



The term 'Mother' means different things to different people, depending on the experience they have had of being mothered or of mothering and everyone's experience is different. For me now as a Granny it is even more interesting because those I am

Mother to are now Mothers in their own right. I find it amazing to think that those tiny beings who five minutes ago were being mothered are now doing the same job –BUT in a different way!

How often do we as Grannies have to bite our tongues or look the other way – do we always manage to do it? I don't think I will answer my own question here! However the Mums we produced still seem to need Mothering too, judging by the phone calls and the requests for Granny Duty help and the cards which still come winging along on that special day! I feel very privileged to be a Mum and a Granny. *Annie Purday*

**IF YOU THINK THERE SHOULD BE MORE
FOR CHILDREN IN FOCAL POINT YOU
COULD BE FOCAL POINT EDITOR!**





FOOD BANK SHOPPING LIST

February/March

**PLEASE DO NOT DONATE ITEMS
CONTAINING ALCOHOL – THANK YOU!**

Shortfall Items

Food

- Long Life Milk, Tinned Ham or Chicken, Tinned Fish, Tinned Fruit, Sponge Puddings (Tinned or Microwaveable)

Non-Food Items

- Toilet Rolls

Please do not donate FRESH food items. Also, please check that your donation is well inside its use-by-date. We cannot distribute out of date food.

Always needed

Food

- Long Life Fruit Juice (not squash)
- Breakfast Cereal
- Cereal Bars
- Tea Bags – 40's or 80's
NOT 240/260/280's please
- Tinned Potatoes
- Packets of Rice (dried)
- All Tinned Vegetables
- Tinned Spaghetti
- Biscuits
- Tinned/Packet Soup
- Jam
- Vegetarian Alternatives – Tinned Vegetable Curry etc.

- Tinned Meat – hot: e.g. mince; stewing steak
- Tinned Meat – cold: e.g. Spam: ham – NOT corned beef please
- Tinned Custard Chocolate / Sweets
- Tinned Rice Pudding
- Tinned Fruit
- Chocolate Biscuit Bars

Additional Items

- Laundry liquid tabs/tablets
- Toothpaste
- Liquid Hand Soap
- Deodorant - female
- Washing up liquid

Items of which we have a plentiful supply:

- Baked Beans
- Coffee

- Pasta – we are now very well stocked
THANK YOU

The Foodbank Collection Point is in the porch of Winthorpe Village Hall which is open when Max Neale's Art Classes are being held. You can also donate items in Winthorpe Church on Sundays when there are services and on Thursdays during 'Open Church.'

Please continue to support the Foodbank and help make a difference!

COLLINGHAM RAMBLERS WALKS FOR MARCH

Sunday March 10th Harlaxton/Denton/Denton Reservoir 6.7 miles

Sunday March 24th Marston/Hougham 7 miles

Wednesday March 13th Edingley 4.5 miles

NEW WALKERS ALWAYS WELCOME

If you would like to join us on any of these walks please

contact NINA WARD on collinghamramblersnottswalks@gmail.com

or 01636 678419 for more information and specific walk details.

Come along and join this friendly group!

We provide an excellent variety of walks in Nottinghamshire and adjacent counties. Most Sunday walks are between 6 and 8 miles (some may have a shorter option). Wednesday walks are usually about four miles with an optional pub lunch.

Walkers should provide snacks, drinks and packed lunches if appropriate.

Suitable footwear and waterproofs are necessary. **Nina Ward**



Winthorpe & District W.I.

To all new lady residents of Winthorpe, the W.I. meets once a month on the third Thursday. Husbands/Partners also take part at some of our events. We start at 7.30p.m. in the Village Hall. As a committee we try to organise a variety of speakers, visits to the theatre, stately homes and gardens together with meals out. We also patronise our local pub. This month, as mentioned in February, we are having a talk on Royal Brides which I am sure will be very interesting. March 14th is our Annual Meeting and we shall be holding a Sale Table. April is the beginning of a new year and a new programme of events will be available. So look out for more news. We seem to be getting through winter fairly lightly with some sunny days. I am sure we are all looking forward to Springtime when gardens are beginning to show some colour and the trees are in bud. **Virginia Seager** (President)



**IF YOU ARE NEW TO THE AREA YOU
COULD BE FOCAL POINT EDITOR!**

March Reflection 2019

Dear friends,

I don't know about you, but six Sunday evenings this year were delightful for me and something to look forward to eagerly. I must admit that it wasn't because of evening prayer, but because of the BBC's dramatisation of *Les Miserables*.



'Les Miserables' by Victor Hugo is one of my favourite books. If I were ever to be a guest on Desert Island Discs, that's the book I'd take as well as the Bible and the complete works of Shakespeare. Actually, I'd ask if I could take two volumes, one in English and one in French, because I'd have plenty of time to use one to help me understand the other.

The story of Jean Valjean, the convicted thief and Javert, the prison guard turned policeman, brings home to us the choices we make as we respond to life's events. Jean Valjean, after his release from prison, was helped by the good bishop of Digne, who told him he'd been given a new chance for life and that he should not waste it. He went on to make every effort to live a good life, to make amends for his mistakes and to improve life around him.

This was made difficult for him by Javert, who was obsessed with Valjean and his petty crimes and was determined to return him to prison. Javert's obsession and refusal to forgive and release a man to live his life well eventually destroyed him.

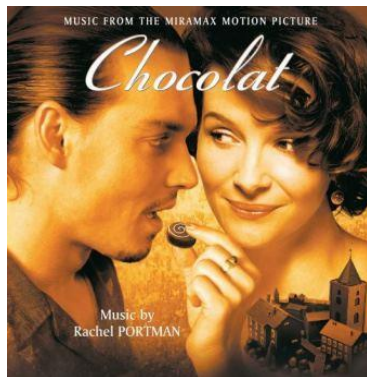
I don't live the extreme lives of characters in 'Les Miserables', but I do have choices to make. Do I remember every little slight and hurt, keeping myself imprisoned by them or do I let them go and release myself and the perpetrator so that we are free to live well?

We all have these choices and the season of Lent, which begins with Ash Wednesday on March 6th, is a good time to think about them.

Another book and film which I like is *Chocolat* and this also explores questions about forgiveness and freedom to live well. This year, our Lent meetings are based on extracts from the film, so they should be really enjoyable, interesting and thought provoking.

Everyone is welcome to join in these friendly get togethers, which start on Thursday March 14th at 2 pm and go on for five weeks. They will take place in Collingham Methodist Church.

With blessings for a good Lent, **Revd Mandy**





giving
nature
a home

News from Langford Lowfields February and March

Langford recently played host to the first shore larks seen in Nottinghamshire since 1994, when 3 of them were found feeding around the edge of the reserve's new Phase 3 area. This area is normally off-limits to the public (but can be easily seen from the perimeter footpath) and so with the help of our volunteer team we opened it up for a



week to let visitors see the larks. These shore lark are ones that potentially breed in Scandinavia and would normally be found in small numbers on the British East Coast during the winter, hopping about looking for seeds amongst the sand dunes. It's unusual for them to be seen so far inland. They arrived at Langford at the same time as the cold weather at the start of February. As the size of Langford continues to increase so too will the number of unusual birds turning up on the reserve. About 100 visitors came to see the shore larks and some of these visitors were also lucky enough to see other exciting species including peregrine, great white egret, bittern, bearded tit, brambling, water pipit, pintail and jack snipe.

Bird seed

The bird seed spread by the car park has been drawing in large numbers of finches and buntings with a mixed flock of over 50 goldfinches and chaffinches being seen on a daily basis. Look carefully and you can pick out the odd robin, dunnock, reed bunting or even brambling amongst them. The bird feeders near the Beach Hut are currently looking very bright and colourful because of the 16+ yellowhammers making use of them.

Woodland work

Winter is the time when we carry out our tree and scrub management. We get a lot of questions about this every year. Trees are special and so it's good to know that the ones we cut down are being felled or coppiced for good ecological reasons. The woodland is dominated by a lot of sycamore trees of various sizes and we are trying to switch this around to give the native oaks and elms more space to allow them to spread out and mature. Every year we take down a number of large elm trees and pull up literally 1000's of saplings.

It will take time, but bit by bit the dominance of the sycamores will lessen. Whilst doing this, holes are opened up in the canopy and this allows us, again over time, to improve the understorey in the woodland, encouraging the growth of more woodland flowers, bramble patches and scrubby areas. Some trees are also felled for health and safety reasons, with a number of the larger trees alongside the footpath being infected with a fungus that's rotting them from the ground up.

Branches over-hanging the entrance track to the car park have been cut back to improve access for larger vehicles and to also help improve the pothole situation by allowing more wind and sunlight to dry the track out. A few trees have also been felled alongside this track as we want to give this small woodland block a better structure, giving some of the trees more space to spread out, creating more opportunity for an understorey to develop and at the same time giving the plantation planting a more natural look.

An area of blackthorn scrub on the western side of the reserve has been coppiced to create an ideal secluded habitat for grasshopper warblers, who like isolated, low, scrubby bushes in an area of long rank grass. A stand of ash trees near the Beach Hut has been pushed right back to allow the development of a wildflower and insect rich area that will border the scrubby woodland area behind the hut. This will provide a good step in the ecological gradient between the footpath and trees and will be great for butterflies and bees, which in turn will provide a great food source for the birds that nest in the thicker blackthorn patches nearby.

Guided Walk – May 2019

Our next guided walk is the 'Dawn Chorus' and will be held on Sunday 12 May 2019 at 7-10am. Please call us on 01636 893611 to book a place. Prices are: Adult Non Member £10.00, Adult Member £8.00, Child Non Member £5.00, Child Member £4.00. **Angela Roberts**

Winthorpe Tennis Club

Looking to the future, Winthorpe Tennis Club currently has excellent facilities in the village to play tennis, which we could just leave for social tennis.

However, we would like to hear your views.

Therefore, could you please find time to answer the questions below and email your answers to the Parish Council at parishclerkatwinthorpe@outlook.com:-



You and tennis-

1. Do any of your household play tennis?
2. If so, where and why there?
3. How many adults in your household play tennis?
4. How many children in your household play tennis?
5. If so what age are your children?
6. Do your children attend the Mini Tennis sessions held in Winthorpe?

What would you like from Winthorpe Tennis Club-

7. Would you like coaching to be offered at Winthorpe?
8. Would you like there to be a Club Night?
9. Are you happy for the Winthorpe Tennis Courts to be for social tennis only?
10. Would you like Tennis competitions to be arranged within the club?

You and Winthorpe Tennis Club -

11. Would you be interested in becoming Chairman of Winthorpe Tennis Club?
12. Would you be interested in becoming a Committee member?
13. Would you like to organise competitions within the club?

General -

14. Have you any other ideas concerning the future of the Winthorpe Tennis courts/Club?

Your response would be greatly appreciated.

Colin Smith, Chairman.

WINTHORPE TENNIS CLUB

invites you to their

AGM



7.30pm Friday 12 April 2019

Winthorpe Community Centre

Everyone Welcome

Maureen Smith 01636 701205

Winthorpe Tennis Club Secretary



**IF YOU HAVE IDEAS ABOUT HOW FOCAL
POINT COULD BE IMPROVED YOU COULD
BE FOCAL POINT EDITOR!**

WINTHORPE WITH LANGFORD PARISH COUNCIL

In the last edition of Focal Point I mentioned that numerous residents had contacted the Parish Council regarding future works to the A1/A46/A17 junctions and round-a-bouts.

The Council has been in contact with the County Council for information on this and I can update you as follows:



Highways England (HE) has been undertaking topographical and environmental surveys on land adjacent to the A46 at Winthorpe. HE informs us that this information will be used to inform decisions on possible route alignments and standards. No final decisions on any future works have been made at this time.

Vegetation clearance is ongoing at the A46 /A1 slip roads / Brownhills junction in relation to interim road safety improvements that are due to be constructed in May 2019. These are not in any way related to the longer term A46 Relief Road improvements which have yet to be finalised by HE. Details of these can be found on the HE website; <https://sites.google.com/nmgroupp.uk.com/a46-newark-roundabouts/home>

HE confirm that they are focusing on upgrading the existing A46 corridor rather than wider “off line” by-passes. They have considered a number of options to improve the A46 such as creating split level junctions but any works are dependent on a cost – benefit analysis that gives good value for money.

The A46 scheme is being promoted by Highways England for a commencement of construction in the period 2020-2025 although this is dependent on the Secretary of State for Transport deciding on what schemes will be funded. An announcement is expected in autumn 2019.

As always, if you would like any further information or need to raise any concerns, please contact me on the following email address:

parishclerkatwinthorpe@outlook.com

Mrs Sally Sillery – Parish Clerk

**IF YOU DON'T WANT TO LOSE YOUR
LOCAL MAGAZINE YOU COULD BE
FOCAL POINT EDITOR!**



WINTHORPE COMMUNITY CENTRE 100 CLUB WINNERS OF THE FEBRUARY DRAW

1st Andrew Parkin

2nd Jonty Husemeyer

3rd Maureen Smith



We now have 69 members and are still aiming to reach 100. If you haven't yet got your tickets all you need to do is sign a membership form and Standing Order mandate for £2 a month. These are available from Duncan Richardson. Please contact Duncan on 01636 651605 or email duncrichardson@sky.com.

**IF YOU ARE INTERESTED IN WHAT GOES
ON LOCALLY YOU COULD BE
FOCAL POINT EDITOR!**



Winthorpe Community Centre Charity Update

The Trustees met on 4 February to review activities by the two charity sub-committees. The Events and Fundraising committee were pleased to report that the last Village Ventures evening had raised £205 and the Armistice Afternoon Tea raised £513 plus £100 from the sale of mulled wine, which was sent to the British Legion. There were over 70 attendees and many of them have commented that the event was such a poignant and positive one. The Operations and Maintenance committee have met twice in recent months to ensure that the Centre continues to run smoothly. The committee had highlighted several immediate issues including redecoration, the efficient operation of the boiler and the replacement of the ceiling in the main hall. Could I make a plea to anyone who has been involved with the Centre since it was built in 2001, to return any keys you may hold as the Trustees are keen to avoid the cost of duplicating keys. Please post them into the post box at the Centre. Finally, the next Village Ventures event is on 7 April (see poster in this edition of Focal Point) and the AGM will be held on Monday 29 April 2019 at 7.30pm. **Peter Bateson** (Chairman)

VILLAGE VENTURES

BOND TO BOWIE



ACCLAIMED JAZZ SINGER

JULIET KELLY

SONGS OF STAGE & SCREEN

"An original talent"
Jazzwise

"A delight"
BBC Music

"Velvet-voiced singer"
Time Out

Winthorpe Community Centre

Sunday 7th April 7.30 pm

Tickets Adults £10

Contact 01636 650422

Licensed Bar Ample Parking

Village Ventures is a Rural Touring Scheme

THE LORD NELSON

Dear folks,

Spring is almost upon us and we cannot wait for the (slightly) longer and (mildly) warmer days, and getting our beautiful Victorian walled beer garden back into shape.



There are lots of changes happening with us at the moment:-

Neil Johnson who many of you may already know is joining us back in the kitchen. Neil's role will be to take some of the weight of running the kitchen on a day to day basis from Dave, to ensure we keep consistently improving our food offer.

Dave and Neil are also recruiting a new team of chefs as we very sadly say goodbye to Joey and Dom who have both been with us since the beginning and are off to pastures new. We thank them for all their hard work over the past few years and know they will be a big success in their new roles.

Dave will be expanding his remit to focus on the pub as a whole and offer outside catering in the local area - so if you're planning a special dinner party, a large celebration at home or just fancy spoiling someone with a private chef, please do not hesitate to get in touch.

As well as updating the food offering, we're giving the restaurant a refurb. This will take place between Sunday 10th & Friday 15th March. The pub will not be closing but all food service including our wine tasting will take place in the bar.

Our March events include:-

Tuesday 5th March - Pub Quiz & Pasta

Thursday 14th March - Wine Tasting with Ann et Vin: £30 per person including supper and cheeseboard

Saturday 16th March - Live Music with Bodgers Mate

Tuesday 19th March - Live Music and Open Mic Night

Sunday 31st March - Mother's Day

Our charity of 2019 nominations and voting have concluded with Reach Learning Disability winning for this year. Reach support over 200 people with learning disabilities, helping them to make a good life for themselves in the local community. They provide weekly sessions at their bases ranging from cookery, pottery, men's groups, women's groups, computers, craft and so much more. **Our confirmed charity events are:** Duck Race 27th May, WinFest 21st & 22nd June, Charity pub quiz 12th November.

We look forward to welcoming you soon. Best wishes

Oli, Emilie, Martyn & Chef David The Lord Nelson Directors



ALL SAINTS

WINTHORPE

CHURCH NOTICES

This time last year we were nearly three weeks into Lent! Whereas, this year will see us celebrating Easter 3 weeks into April!!! Hopefully by then the weather will have warmed up a bit as we will be **in Church** for our two Easter Group Services on Good Friday (Final Hour at the Cross) and Easter Eve (Service of Light).

It has been rather a quiet period in church at the moment but with Lent approaching there will be extra Wednesday services throughout the month at Collingham's St. John the Baptist church.

The New Boiler Project is progressing but nothing exciting to report yet!

At our PCC Meeting last month we saw the results of a drone inspection of the spire and roof. The church, being in the position it is, receives much harsh treatment from the wind which is beginning to weather some of the bricks at the spire end, meaning in the near future remedial work will have to be done up there!

Another mention for the Church Electoral Roll 2019 - if anyone would like to be added to it please do get in touch in order to fill out the designated form.

Notice is now formally given that Winthorpe Church APCM will be held in the Community Centre Meeting Room on Wednesday March 27th starting at 7.30 p.m. We hope to see a few of you there.

We remember in our prayers any village person who is ill, hospitalised or facing a bereavement at this time.

Tish Applewhite Churchwarden (643763)

**CONTACT ANNIE ON 10636 658347 AND
YOU COULD BE FOCAL POINT EDITOR!**



Church Services for March 2019



Sunday 3rd

(next before Lent)

9.00 a.m.

Holy Communion

Holme

Wednesday 6th

7.30 p.m.

**Holy Communion
and Ashing Ceremony**

**Collingham
St. J the B**

Sunday 10th

(1st of Lent)

10.30 a.m.

Holy Communion

Winthorpe

Wednesday 13th

7.30 p.m.

**Stations of the Cross
and Compline**

**Collingham
St. J the B.**

Sunday 17th

(2nd of Lent)

9.00 a.m.

Holy Communion

Langford

10.15 a.m.

Morning Worship

Winthorpe

Wednesday 20th

7.30 p.m.

**Stations of the Cross
and Compline**

**Collingham
St J the B.**

Sunday 24th

(3rd of Lent)

5.00 p.m.

Evening Prayer

Winthorpe

Wednesday 27th

7.30 p.m.

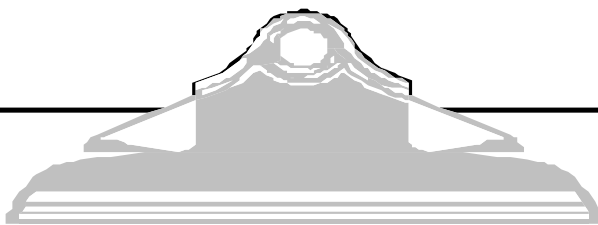
**Stations of the Cross
and Compline**

**Collingham
St. J the B.**

The Church Bells may be rung for any of the Winthorpe services.

Church Cleaners – Mrs J. Foden and Mrs C. Hasman





MARCH CALENDAR



Friday 1st	Garden Club Outing
Monday 4th	Silver Bin Lunch Club 12.30 Community Centre
Tuesday 5th	PANCAKE DAY!
Monday 11th	Green and Brown Bins Mobile Library
Thursday 14th	WI AGM 7.30pm Village Hall
Monday 18th	Silver Bin
Wednesday 20th	Garden Club 7.30 pm Community Centre
Thursday 21st	Parish Council Meeting 7.30 pm Village Hall
Monday 25th	Green and Brown Bins
Sunday 31st	HAPPY MOTHER'S DAY!

NB BIN COLLECTIONS IN HOLME VILLAGE ON FRIDAYS

Village organisations and local bodies – if at any time you would like to get in touch with a village contact, why not try the village website www.winthorpe.org.uk

FOODBANK OPENING TIMES The collection point is in the porch of the Village Hall which is open whenever the hall is being used e.g. for Art Classes: Tuesday evening 7-9, Wednesday 10-2.30, Thursday morning 10-12, Thursday afternoon 1.30-3.30, Friday morning 9.15-12.15 Friday afternoon 1.30-3.30 and the first Saturday in the month 10-12. It is also open some evenings when it is used by different clubs or classes.

