



2017

Ed's Comments

'What's all the fuss about when it's only one day?' someone said to me recently. But like all celebrations it is more than just the actual day. It is the weeks and sometimes months that things can take to plan and organise. It's the fun and anticipation of it all. It is also the way we think differently about our communities during the festive season and the build up towards it. Christmas would mean very little without the carol services and the special meals. Homes and public places look brighter and more alive when they are decorated and lit up. It is good to hear from those near and dear to us and sometimes, unexpectedly, from those we thought had forgotten us.

We also think about other people in a different way. Somehow the spirit of Christmas makes us more generous (unless we're called Scrooge!) to those around us and often to those much further afield. That can't happen in just one day!

I'm thinking about those who I couldn't manage without throughout the year. They are stars all year round! Thank you to Nick, my technical advisor; Pat, my proof-reader and Duncan, our treasurer. Thanks are due to our deliverers, our advertisers and everyone who contributes to Focal Point. Thank you to Willsons, our printers and thank you to you – the readers of Focal Point who make everyone's effort worthwhile!



Festive greetings to you all! Annie Purday

I'm really sorry but the closing date for the January issue is Friday 8th December because the printers are shut over the Christmas/New Year period.

Deliver to Annie and Nick 18, Hargon Lane or email

nickwynne@virginmedia.com

LOOKING AHEAD



LUNCH CLUB

Dates for the Lunch Club in 2018

February 5 th	March 5 th	April 9 th	May 14 th
June 4 th	July 2 nd	August 6 th	September 3 rd
October 1 st	November 5 th	December 10 th	

**NB The December Lunch Club is on Monday 11th December 2017
as advertised in last month's Focal Point**



Winthorpe Summer Festival 2018

The Festival Committee are planning to hold the Summer Festival at the Community Centre on **Saturday 30th June 2018**. Please put the date in your diaries and come along to support us in raising money for our designated charities (to be announced at a later date.)

More information will follow in future editions of Focal Point.

Sue Masheder (Festival Committee)

VILLAGE VENTURES

Date for your diary - Sunday 25th February 2018

The Village Ventures presents - OLD HAT JAZZ BAND

Lizy Exell formed the Old Hat in 2012, while she was still a student at Trinity Laban Conservatoire. The band features some of the finest young jazz musicians London has to offer and combines the quintessential sound of classic jazz with originality and characterful musicianship. Old Hat continues the tradition of crafting swinging tunes from favourite songs of the 20s, 30s and their own compositions. Old Hat Jazz Band enjoys playing for listening music lovers wherever they are invited.

Tickets will be £10.00 and available from Helen Bradley on
07739424600





High Street
Collingham
Newark NG23 7LB
General Enquiries/Emergencies: 01636 892156
Email: collingham.medicalcentre@nhs.net

SURGERY OPENING HOURS
Monday 8.00am-7.15pm
Tuesday - Friday 8.00am-6.30pm

For Appointments telephone: 01636 893956 8.15am – 5.30pm
For Prescriptions telephone: 01636 892210 8.30am – 12.00pm

CHRISTMAS CLINIC TIMES

Monday 25 December – CLOSED
Tuesday 26 December – CLOSED
Wednesday 27 December – 8.30 am – 5.30 pm
Thursday 28 December – 8.30 am – 5.30 pm
Friday 29 December – 8.30 am – 5.30 pm

Monday 1 January – CLOSED
Tuesday 2 January – 8.30 am – 5.30 pm
Wednesday 3 January – 8.30 am – 5.30 pm
Thursday 4 January – 8.30 am – 5.30 pm
Friday 5 January – 8.30 am – 5.30 pm

Our communication with patients relies on current information. If your personal details change, including telephone numbers, please let the practice know. Thank you.

Out of Hours Service is provided from 111 when the surgery is closed.
Website: www.collinghammedicalcentre.co.uk



COLLINGHAM PHARMACY



YOUR local pharmacy dispensing NHS, Private and Veterinary prescriptions.
Offering a wide range of medicines, vitamins, toiletries, pet medicines and seasonal gifts.

NHS Services Include:



Medicine Use Review



Morning After Pill



Blood Pressure Measurement



Minor Ailments Scheme

High Street, Collingham, Newark, NG23 7LB

Tel: 01636 893038

email: collingham.pharmacy@nhs.net



**NEWARK PARISH CHURCH
CHRISTMAS TREE FESTIVAL**

**This will be the 10th Tree Festival held in the marvellous setting of
Newark Parish Church**

Saturday 2 Dec - Sunday 10 Dec 2017

Over 100 trees decorated by local schools, organisations & businesses

Opening times: Saturdays 9.30am - 5.00pm

Sundays 11.00am - 4.30pm

Monday 11.00am – 4.30pm

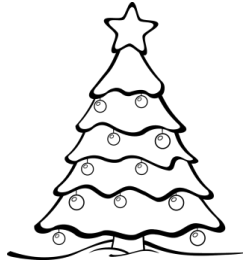
Tuesday - Friday 10.00am - 4.30pm

Entrance: Adults £2 Children 50p

Refreshments, Seasonal Music, Christmas cards, Raffle, Stalls

FESTIVAL CAROLS OF PRAISE - 10 Dec at 5pm

CHRISTMAS COFFEE MORNING



**Enjoy a cup of tea or coffee
and a Mince Pie ***

**whilst listening to Christmas Carols
performed by children
from Winthorpe Primary School.
Thursday 14th December 2017**

**10.00am to 12.00pm
(to coincide with the Post
Office)**



**Winthorpe Community Centre
Ladies and gentlemen – all welcome.**

***£1.50**



www.thewi.org.uk

www.winthorpe.org.uk

DECEMBER REFLECTION

Dear friends,

I'm a great fan of radio 4, and I always know that Christmas is getting near when there's a discussion on Woman's Hour about how to cope with all the bedding when you're expecting guests to stay.

At this time of year, lots of us spend time thinking about our homes, from the number of clean sheets we need, to how to decorate the tree to making sure our tables look their best ready to be filled up with delicious food.



We might be anxious about where we will spend Christmas or who will

be coming home to us. It seems sad to think of anyone being alone or far from home and yet at the heart of the Christian story is a young pregnant woman, forced by a brutal regime to leave her home and family and travel to an overcrowded town which didn't have the resources to provide for its sudden, enforced growth in population. That woman was



given shelter in a stable and that's where she gave birth to her son, with no mother, sister, aunt or lifelong friend to help her and celebrate with her.

Recently I read a beautiful quote which has got me thinking. It's by GK Chesterton and it goes like this: 'Christmas is built upon a beautiful and intentional paradox, that the birth of the homeless should be celebrated in every home.'

Maybe that story of Mary giving birth to Jesus resonates with us and we want to make the most of our homes and families. Maybe it makes us think of the plight of many refugees today, so we want to enjoy familiar comfort and companionship. Maybe at the end of a year when we've been shocked by terrorist attacks, we want to be especially close to those we love.



Maybe the birth of Jesus speaks to a deep longing in our hearts to be at home and sounds an age old echo that God has created us for himself and our hearts are restless till we find our rest in him (St Augustine.) In the birth of Jesus, instead of people striving to get to God, God has come to us and made his home with us; he's closed the gap between heaven and earth and taken away any obstacles that can come between us.

How can we prepare to be at home in and with God?

It might help to sing or read this verse from the carol 'O Little Town of Bethlehem' as a prayer.

O holy child of Bethlehem,

Descend to us, we pray;

Cast out our sin and enter in:

Be born in us today.

We hear the Christmas angels

The great glad tidings tell:

O come to us, abide with us,

Our Lord Emmanuel.

I hope you have a very happy Christmas and New Year and I hope you are blessed by knowing that God is with us. **Rev'd Mandy**



Head Teacher: Mr Rob Cook

Thoroughfare Lane, Winthorpe, Newark, Nottinghamshire, NG24 2NN

Telephone/Fax: 01636 680060 www.winthorpe.notts.sch.uk

head@winthorpe.notts.sch.uk

It's approaching that time of the year again, and for the majority of our children, Term 2 and its associated festivities represent the most exciting time of the year. We try not to mention Christmas until the 1st December, however time frames for rehearsing the Key Stage 1 Nativity and practicing our carols makes this difficult!

We will be singing carols at the Community Centre on Thursday 14th December, starting at 10:30am. It was a lovely event last year and hopefully many of you will be able to attend. I'd also like to



invite you to the PTA's Christmas Fair which is held at school on Friday 8th December starting at 3:30pm. We'll also be having a tree at St. Mary Magdalene's Christmas Tree Festival this year for the first time.

It was great to see so many of you attend our Community Lunch earlier in the month. The children love having you in school and are always desperate to help serve and look after you all. We'll be having another Community Lunch in Spring.

It's been another busy term at school. Class 1 have settled into school life and have loved exploring and discovering their outside area. Class 2 have been having great fun with their Knights and Castles topic. They had a fancy dress day and have done some superb writing on how to rescue a princess. I've been very impressed by the creativity and quality of Class 3's Egyptian homework projects which have included edible pyramids, fantastic models and hieroglyphic cookies! Class 4 have really got into their Aztec and Chocolate topic as well as really working really hard with their English and Maths. **Rob Cook** (Head Teacher)

SCHOOL HARVEST FESTIVAL



The school's contribution to the Newark Foodbank after the Harvest Festival was an amazing 68.7 kg! Thank you so much to everyone involved.



COLLINGHAM RAMBLERS

WALKS FOR DECEMBER 2017

Sunday December 10th Girton 7 miles

Wednesday December 20th Edwinstowe 4.5 miles

NEW WALKERS ALWAYS WELCOME

If you would like to join us on any of these walks please contact NINA WARD on ninajward@live.co.uk or 01636 678419 for more information and specific walk details.

Come along and join this friendly group!

We provide an excellent variety of walks in Nottinghamshire and adjacent counties. Most Sunday walks are between 6 and 8 miles. Wednesday walks are usually about four miles with an optional pub lunch. Walkers should provide snacks, drinks and packed lunches if appropriate. Suitable footwear and waterproofs are necessary.

Nina Ward



Old Text Messages (Part 6)

A continued Analogy by Bob Warriner

The postcard was a widely used as an early form of greetings card including Christmas, New Year, Easter, Birthdays and other occasions. Many were simply conversions of general sale cards adapted by the seller or the buyer. All it needed was some clear glue/paste, a steady hand, some sparkly dust and you could quickly stylise your own cards.

The one shown below was printed in Germany and has a scene of children playing in the snow wearing their traditional style of dress of that time.

The Germanic influence is not surprising as many of our Christmas traditions came from Germany and were instigated by our Royal families who had strong German connections. It was Queen Victoria's Prince Albert in particular who popularised bringing the Christmas tree into the home and decorating it.



The message side of this card is of local interest because it has a clear Winthorpe postmark and sent by Ethel to Bertha in Aslockton, Notts (why don't they bring those old names back?) Anyone know who it was? You will notice that the postmark is dated 23rd Dec which means it may not have arrived in time unless the postal service was much quicker in 1911 than today!

The card reads : "Dear Bertha, Very many thanks for the card & good wishes. I am coming home next Wednesday. Wishing you all a very happy Xmas. Love Ethel x"



This montage below shows examples of “touristy” Derbyshire view postcards embellished with a greetings message to suit the occasion. The artist Henry Hadfield Cubley is of local interest being a one-time Newark resident and nephew of the Newark Mayor of 1866, Mr. William Harold Cubley (also a renowned artist and teacher of art.) They were posted between 1900 and 1910. He travelled and painted many landscapes throughout the British Isles.



Newark & Sherwood museums have many of their works on display or archived.

A very Happy Christmas & New Year to all Focal Point readers and beyond.

Best Wishes,

Bob Warriner

GARDEN CLUB

November's Garden Club presentation was something of a surprise, since although it was entitled Wired Garden Structures, in fact we enjoyed a presentation on making and decorating Christmas Wreathes!

Our guides were Paula and Steve Routledge from Floral Media in Caunton, whose broad horticultural experience was much in evidence on the night. Little wonder that among her talents, Paula lists gardening broadcaster on BBC Radio Nottingham.

Steve started off by creating the wreath using a range of stems he had brought, including black willow, white willow, dogwood and field maple, the mix of which provided lovely colour variation. As he created the wreath, Steve shared some history of wreath making going back to Roman times when they were a sign of wealth, and described how they feature today in the laurel wreathes around the neck of racing drivers and the ringed symbol of the Olympic Games.

Steve also pointed out the medicinal properties of willow, which is used in the manufacture of aspirin, and suggested it can be chewed for pain relief, whilst working with it soothes arthritic hands.

Once the wreath was formed, each stem being tucked into the wreath then wound around the whole, Steve trimmed the loose stems and handed it to Paula for decoration. Paula had a range of decorative items which she wired to the wreath, including pine cones, dried lime fruit slices, cinnamon sticks, treated and dyed oak and beech leaves, feathers and natural hessian ribbon, with which she topped off the wreath perfectly with a bow.



Paula outlined her recent studies to become a floral demonstrator, culminating in a nerve-wracking complex test day involving a metal obelisk with willow wreathes fashioned together to create a sphere to top the obelisk. Little wonder that her theme for our night was that less is more and simple decoration can be the most effective!

Once the wreath was complete and admired by all, there was a second part to the night, with Steve running through the do's and don'ts of Christmas Pot

Plants, covering cyclamen, hyacinths, poinsettia, azaleas, and snowdrops amongst others. Topics included which were hardy enough to withstand winter, feeding, pruning and potting on. We then had the chance to purchase some of their samples.

Members are reminded that there is no meeting in December, and so our next meeting is on Wednesday 17th January, which is our Social Evening.

Paul Kitson

Music of the Christmas Season

F D O Y O U H E A R W H A T I H E A R Q V I Q O Q S
 L Q E J W F Y R M D J O Y T O T H E W O R L D F G Y
 J U T C Y E D R M W H S B I T G B O L D Q Q H Q N Y
 J V N U K V A P V T P O T E S U O H E H T N O P U O
 T H G I N T N E L I S F L L E O N T S R I F E H T B
 D U R N X Q H U O V Z R J H D R X H T K N K P Q T R
 M E H E L H T E B F O N W O T E L T T I L O T B I E
 X A W C V M F L H B D H F X O P X H B F Z M I A N M
 Q N Y B A B A T N A S M A D A D I V A N Z I L E F M
 S K X V B C Y R A C L E E R T S A M T S I R H C O U
 G N I S S L E G N A D L A R E H E H T K R A H J R R
 F F S I L V E R B E L L S L L E B E L G N I J E C D
 H D O F K N L L F W K Y V Z T J R J P S Y Y H U H E
 O Q R M D N A L R E D N O W R E T N I W F Q O Z R L
 W E W I S H Y O U A M E R R Y C H R I S T M A S I T
 G O D R E S T Y E M E R R Y G E N T L E M E N R S T
 R A E L C T H G I N D I M E H T N O P U E M A C T I
 S A N T A C L A U S I S C O M I N G T O T O W N M L
 A M R O A V Z B O M F R O S T Y T H E S N O W M A N
 J X A W A Y I N A M A N G E R E D I R H G I E L S C

Away in a Manger

Up On the Housetop

Silent Night

Silver Bells

God Rest Ye Merry

O Christmas Tree

Jingle Bells

Gentlemen

Joy to the World

Do You Hear What I Hear?

The First Noel

Little Drummer Boy

Feliz Navidad

It Came Upon the
Midnight Clear

Sleigh Ride

Frosty the Snowman

O Little Town of
Bethlehem

We Wish You a Merry
Christmas

Santa Claus Is Coming to
Town

Deck the Halls

Nuttin' for Christmas

Hark the Herald Angels Sing

Santa Baby

To find the answer to the trivia question, look for a word or phrase that is hidden in the puzzle, but not in the word list

Trivia: In what Christmas song would you sing about Parson Brown,
a circus clown, a bluebird, and a new bird?

Answer: _____

CHRISTMAS AT THE LORD NELSON

Dear folks,

We hope this finds you all well and happy.

Our first November Creation Station went really well, with over 12 tiny humans making firework-themed art and crafts.

We also held our final "Bingo and Bangers" for 2017 hosted by Bingo-Expert Emilie with her usual assortment of 'interesting' prizes.



A courtesy reminder of our December events:-

From 1st to 24th December and 27th to 31st Dec: "Nelson Noel" menu served.

Tuesday 12th Dec: Special Winthorpe Villagers' Christmas lunch (12pm to 3pm)

Sunday 17th December: Santa and his miniature horse are returning to the Lord Nelson! 10.30 am – 2.00pm. (All proceeds to be donated to Winthorpe Primary School)

Sunday 25th December: We are closed.

Tuesday 26th December: Boxing Day Brunch served from 12pm to 4pm.

Sunday 31st December: Black-Tie James Bond-themed New Year's Eve Party, 8pm til late. Cocktails, buffet and dancing.

We're serving Sunday lunch on Sunday 31st December (New Year's Eve) from 12pm to 4pm, then closing briefly ahead of our James Bond black-tie NYE party at 8:00pm.

Look ahead to January!

We're hosting a lunch in January for Winthorpe villagers on Tuesday 9th January at 12:30pm. Menu: Roasted tomato soup, cottage pie with seasonal veg or chunky vegetable lasagne, apple crumble with custard or bread and butter pudding. 2 courses for £10. All welcome.

Our first pub quiz of 2018 will also be on Tuesday 9th January, and will then revert back to the first Tuesday of every month.

We hope to welcome you to the Lord Nelson soon.

With best wishes and seasonal greetings!

Oli, Em, Martyn and Chef David (The Lord Nelson Directors)

The Lord Nelson, Winthorpe, Newark Notts, NG24 2NN

Tel 01636 707705 or thelordnelsonwinthorpe@gmail.com



FOOD BANK SHOPPING LIST

November/December 2017

PLEASE DO NOT DONATE ITEMS
CONTAINING ALCOHOL – THANK YOU!

Urgently Needed

Food

- Jam, Sugar, Tinned Carrots, Tinned/microwavable sponge puddings, Chocolate biscuit bars.

Non-Food Items

- Toothbrushes, Toothpaste, washing up liquid, Laundry liquitabs.

Please do not donate FRESH food items. Also, **please** check that your donation is well inside its use-by-date. We cannot distribute out of date food.

Always needed

Food

- Tinned Custard
- Tinned Spaghetti
- Tinned Vegetables – NOT sweetcorn
- Tinned Tomatoes
- Jars of Pasta Sauce
- Chocolate – bars/sweets
- Cereal Bars
- Cereal
- Biscuits
- Long Life Juice – NOT fresh please
- Sugar
- Tinned/Packet Soup – meat
- Jam
- Chocolate Biscuit Bars: e.g. Kit Kat; Penguin; Rocky etc.
- Tinned/Packet Vegetable Soup

- Tinned Meat – hot: e.g. mince; stewing steak
- Tinned Meat – cold: e.g. Spam: ham – NOT corned beef please

Additional Items

- Deodorant
- Feminine Hygiene
- Men's Toiletries
- Toothpaste
- Toothbrushes
- Shampoo
- Shower Gel
- Liquid Hand Soap
- Laundry liquitabs/tablets
- Dog/Cat food
- Strong Carrier bags

Items definitely **NOT** needed at present, as we have a plentiful supply:

- Baked Beans
- Coffee

A big 'thank you' to everyone who has donated to the Newark Foodbank Collection Point just inside the porch of Winthorpe Village Hall or in Winthorpe Church. So far we have collected 84.3Kg since the collection box was installed.

Please continue to support the Foodbank and help make a difference!

The End of the Season Aboard n.b. Mulberry

Last Wednesday, we decided it was time to put the boat to bed for the Winter. We had abandoned it in mid-Cheshire and not been back for several months after an eager early-year start in an attempt to get to North Wales. So the boat has been laid unused throughout the Summer and we had expected to find a musty neglected hulk. Of course, this was not the case and, apart from numerous spiders making webs everywhere, the boat was in good order.

We arrived just as daylight was ebbing and the rain clouds crowding the sky. We managed to collect fresh water and all our luggage before the rain fell in earnest so the evening was spent listening to the torrent hitting the metal roof.



On waking the next morning we were greeted by bright sunshine and so decided to set out for Lymm just to make sure everything was in working order. Travelling along the Trent and Mersey canal, towards Preston Brook, we encountered

three tunnels. The first, at Barnton, was 500 metres long, with 'open access' and has a kink in the middle that prevents you from seeing all the way through so has to be travelled with caution. The second tunnel, Salterford, only 400 metres, is restricted to a timed passage only so we had to wait until 11 o'clock before we could travel. This one had a definite bend in the middle and it was a good job we waited because there were three other boats in the tunnel coming towards us. Later in the day we came to Preston Brook Tunnel, nearly one kilometre long, which again was limited to timed passage because it too is not straight. None of these tunnels have towpaths through them and so when they were originally built the boatmen would lie on their backs and walk along the walls to propel the boats - very strenuous!

The Trent and Mersey on this stretch through Cheshire runs along the hillside overlooking the River Weaver twenty metres below. The scenery in this part of our country is beautiful, enhanced by many wooded areas that border the canal. We enjoyed a pleasant few days motoring slowly towards Lymm and

back. The boat is now packed away neatly and ready for next year's adventures. Perhaps Llangollen will be reached next year. Lynne Shapley



NEWARK FOODBANK COLLECTION POINTS



The Village Hall is open whenever Max Neale's Art Classes are being held i.e. Tuesday evening 7-9, Wednesday 10-2.30, Thursday morning 10-12, Thursday afternoon 1.30-3.30, Friday morning 9.15-12.15 Friday afternoon 1.30-3.30 and the first Saturday in the month 10-12. It is also open some evenings when it is used by different clubs or classes.

Please note: Max will be taking a well-earned break over the Christmas/New Year period and the Village Hall will not be open. You can however donate items in Winthorpe Church whenever there are services and on Thursday afternoons during 'Open Church.'

Please support the Foodbank and help make a difference especially at Christmas time!



Winthorpe & District W.I.

We had an interesting November meeting sampling the various organic body products.

December is a busy time for us. Our Christmas celebration is on Wednesday 13th December in the Community Centre.

Once again we are holding a coffee morning on Thursday 14th December 10.00a.m. to 12noon, in the Community Centre, so please make a note in your diaries. The pupils of Winthorpe School will be coming to entertain us. A Christmas Tree Festival is held each year in Newark Parish Church and we will be decorating a tree.



Looking forward to 2018. The January meeting is a talk on the Queen's diamonds. We shall have a sale table and also our usual raffle. Hostesses for January are Liz Moran and Diana Kitson.

Virginia Seager (President)

THREE WISE WOMEN

If three women had gone to visit Jesus at Bethlehem instead of the Three Wise Men, this what might have happened:

1. They would have asked directions.
2. They would have arrived on time.
3. They would have tidied up the stable.
4. They would have helped in the birth.
5. They would have brought practical presents.
6. They would have made a casserole.



Contributed by Pat Finn

A CHRISTMAS VERSE

The holly and the ivy
Are out there crisp and green,
And ready to be gathered
To grace the Christmas scene.
It is the Advent season,
The air is crisp and bright:
A time for Christmas carolling,
The church in candlelight.



We sing of angels, shepherds, kings,
And hope of Jesus's birth,
Of endings and beginnings
And peace for all on earth.
It is a gladsome season:
Enjoy it while you can!
Let bells ring out to celebrate
God's Christmas gift to man.
(and woman too but it doesn't rhyme!)

Ann Sowerby





giving
nature
a home

News from Langford Lowfields November 2017

Starting with an update on the works at Langford Lowfields...

The sluice is almost finished. Workers are adding the finishing touches, tidying the site and reseeded the area they have been working in. The water levels are slowly rising, which in turn will draw in more winter wildfowl such as goldeneye. There are three key bird species we target to attract to Langford – the bearded tit, bittern and marsh harrier. Unfortunately the floating bridge remains closed as the water levels have not yet risen enough.

Phase 3 restoration work is progressing nicely. The sand and gravel extraction area is being restored to add 35 hectares of amazing reedbed habitat. 1 hectare is equivalent to 8 Olympic swimming pools, so that's 280 Olympic swimming pools!

Progress on the sand martin bank has not been as we had hoped. Unfortunately, due to circumstances beyond our control, work has not commenced yet, however we are still hoping this will be completed this year.

Sightings include Raven, Green Sandpiper, Snipe, Redshank, Redwings and Skylarks flying over, plus several Red Admirals, Stonechat, Jack Snipe and Goldeneye.



Volunteer work parties have been hard at work in November. Coppicing work has been undertaken on the hawthorn and blackthorn area. This is a particularly dense patch which is being thinned out to make it habitable and more desirable for grasshopper warblers. We hope the grasshopper warblers will return to us next year, and in larger numbers.

We also have some recruitment opportunities available – please mention these to family and friends in case anyone has some time to spare and would be interested in helping us in our conservation work. We have vacancies in the Grounds Maintenance Team and also Visitor Welcome Assistants (Saturdays and Sundays). Please call Jenny or Angela on 01636 893611.

Angela Roberts



Local Travel Agency Marks 70th Anniversary

Celebrations start at Southwell Travel Show

The seventh annual Southwell Travel Show takes place on Saturday 20 January 2018 at the Saracen's Head Hotel in Southwell. The event – organised by Hyde Barker Travel of King Street, Southwell – is the first in a series of celebrations marking the travel company's 70 years in business.



Photo YALLANCE MANSFIELD

The story of Hyde Barker Travel started when Denzil and Peggy Hyde-Barker returned to England from India after WW2. The first holidays were organised from the front room of their house in Ravenshead just outside Mansfield, and so successful were they that a year later – in 1948 – Denzil and Peggy opened 'Holiday Travel' in Belvedere Street, Mansfield. Son

Michael Hyde-Barker joined the firm in 1960 and the company's name changed to Hyde-Barker Travel; a name that became familiar across the East Midlands as more branches opened in the 1960s and 70s.

The travel industry went through many changes during the 1990s and 2000s, but the Southwell shop continued to thrive thanks to its focus on customer service. In 2011 the Hyde-Barker family retired and passed ownership to Barbara Cray and John Lightwood, both of whom have decades of travel industry experience.



Barbara and John launched the first Southwell Travel Show in 2012 and each year the number of exhibiting travel companies and visitors has increased.

"In a couple of hours you can virtually travel the world, and talk to experts about your own holiday dreams, whether that is a cruise, a tailor-made trip of a lifetime or an escorted tour," says Barbara.

This year's range of 26 travel companies includes well-known operators such as Titan and Riviera, and smaller specialists like Serenity Holidays, Typically Italian and Inside Japan. Hyde Barker staff will be on hand throughout, and appointments are also available at the agency between 3pm-4pm for those who want to discuss specific holiday arrangements.



Entry to the Southwell Travel Show on 20 January is free, and all visitors are invited to take advantage of a £50 discount on any featured holiday booked by 27 February 2018.

See www.hbtravel.co.uk for details.



SOUTHWELL TRAVEL

SHOW 2018

THE TRAVELLERS



TRAVEL AGENCY

Saturday January 20th Saracens Head Hotel 10am - 3pm
Exclusive show offers - Expert advice - Presentations - Holiday raffle
Tel: 01636 816 262 Hosted by Hyde Barker Travel

Exchange this advert for a £50 holiday voucher at the show or at www.hbtravel.co.uk

WINTHORPE COMMUNITY CENTRE 100 CLUB

Result for October 100 Club Draw:

<u>1st</u>	<u>No.28</u>	S A Regent	£30.00
<u>2nd</u>	<u>No.11</u>	M J Casterton	£15.00
<u>3rd</u>	<u>No.32</u>	P Finn	£ 5.00



We now have 50 members and we look forward to seeing the club grow to our goal of 100 members. If you haven't yet got your tickets all you need to do is sign a membership form and Standing Order mandate for £2 a month. These are available from Duncan Richardson. Please contact Duncan on 01636 651605 or email duncrichardson@sky.com.

For further details see the Community Centre web site.

JOIN OUR 100 CLUB TODAY AND YOU COULD BE A WINNER!

WINTHORPE WITH LANGFORD PARISH COUNCIL

The Parish Council held its monthly Parish Council meeting in the village hall on Thursday 16th November 2017.



I am pleased to report that the annual village Bonfire and Firework display raised £1,231.92.

This is slightly more than last year and is a fantastic achievement.

The Chairman would like to thank Winthorpe Primary School, who allow us to use their facilities, Newark Community First Aid, Collingham Young Farmers and the many volunteers from the village who made the event such a success.

The Parish Council has applied to N.S.D.C Planning Department for permission to lay a tarmac path from Hargon Lane to the new burial plot. The path will be in keeping with other pathways in the village. The burial plot will be enclosed by a low level fence, again, in keeping with other fences in the village.

Following the appeal in last month's Focal Point regarding the Parish Council concern over the condition of the skateboard park equipment and surrounding fencing, the Council are pleased to say that a local resident has agreed to clear the site and fencing, with the exception of the shelter and basketball net.

This is excellent news as the area will be safe for children to use without the risk of falling or injuring themselves on unsafe equipment.

A note for your diaries, the summer festival is to be held on Saturday 30th June 2018. Further details will follow in due course.

Mrs Sally Sillery – Parish Clerk parishclerkatwinthorpe@outlook.com



ALL SAINTS

WINTHORPE

CHURCH NOTICES

We sadly said goodbye to David Marriott after his sudden death and our thoughts are with Ann and her family at this time.

We enjoyed several special services in November with the Patronal Festival and the very well attended Remembrance Service taken by Mandy. We look forward this month to even more!!

During Holy Communion on December 10th we have the Baptism of Floryn Ivy Dennis. On Friday, December 15th we will be decorating the church and I would like to thank all the ladies who this year have produced such lovely arrangements for the windows. The following Sunday is the Carol Service where we hope many of you will stay afterwards for the usual Christmas refreshments. This is followed on Christmas Eve by a 7 p.m. Holy Communion.



We host Winthorpe Primary School's Carol Concert on Wednesday December 20th where we are hoping for another 'full house'!

I cannot believe we are nearly at the end of another year! It has been a good year in church – we have been delighted to see larger congregations, more children in church and so many visitors on a Thursday afternoon arriving by foot, (either walking or running!) by bicycle and by car.

It just leaves me, on behalf of the PCC, to wish everyone a very merry Christmas and a healthy and happy New Year.

Tish Applewhite, Churchwarden (643763)

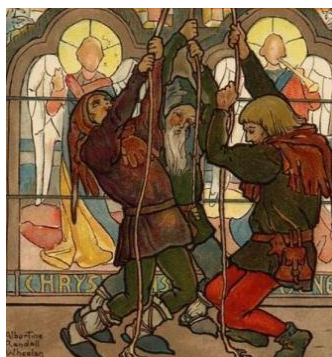
Church Services for December 2017



Sunday 3rd (1 st of Advent)	9.00 am	Holy Communion	Holme
Sunday 10th (2 nd of Advent)	10.30a.m.	Holy Communion with Holy Baptism	Winthorpe
Sunday 17th (3 rd of Advent)	4.30p.m.	Carol Service	Winthorpe
	6.15p.m.	Carol Service	Holme
Sunday 24th (4 th of Advent)	9.00a.m.	Holy Communion	Langford
	7.00p.m.	Holy Communion	Winthorpe
Monday 25th (Christmas Day)	10.15a.m.	Holy Communion	Holme

The Church Bells will be rung on **Saturday, December 9th** for about two and a half hours starting at **10a.m.** The Church Bells may be rung for any of the Winthorpe services and may be rung on Friday evenings between 7.00 and 9.00pm for practice.

If you are able to ring or would like to learn how to ring please get in touch with the Tower Captain, Ian Hasman, on 01636 679105 or e-mail him at I.hasman@ntlworld.com

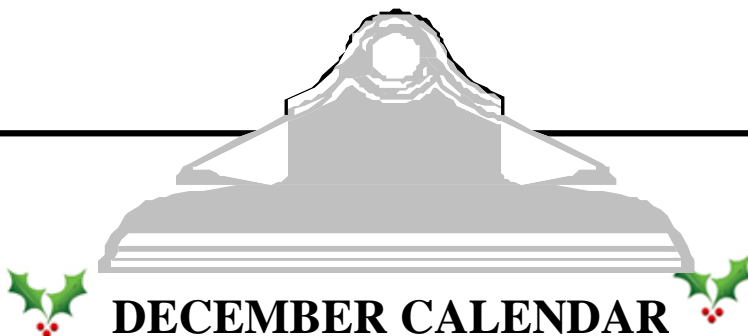


Church Cleaners - Mrs B. Finn and Mrs P. Nelson

Brasses - Mrs J. Taylor and Mrs J. Everson

Church Flower Ladies – The church will be open from 2 p.m. on Friday December 15th to receive your flower arrangements. We are extremely grateful for your wonderful support. Please call Tisha on 643763 if you are unable to decorate your usual place.

Removal of Flowers – 2 p.m. on Tuesday January 2nd. Tish Applewhite



DECEMBER CALENDAR

Sunday 3rd	Winter Wonderland Walk 1.30pm Langford Lowfields
Monday 4th	Green and Brown Bins
Friday 8th	Winthorpe Primary School Christmas Fair 3.30pm
Monday 11th	Silver Bin Lunch Club 12.30 Community Centre
Wednesday 13th	WI meeting 7.30 pm Village Hall
Thursday 14th	WI Village Christmas Coffee Morning and Post Office Parish Council Meeting 7.30 pm Village Hall
Sunday 17th	Carol Service 4.30 pm Winthorpe Church Carol Service 6.15 pm Holme Church
Monday 18th	Just Green Bin (no Brown) Mobile Library
Monday 25th	CHRISTMAS DAY – HAPPY CHRISTMAS!



NB No Silver Bin collection on or around Christmas Day. Green Bins will be collected on Tuesday 2nd January

NB BIN COLLECTIONS IN HOLME VILLAGE ON FRIDAYS

'Village organisations and local bodies – if at any time you would like to get in touch with a village contact, why not try the village website.' www.winthorpe.org.uk

