



2017

Ed's Comments

Is 'new' always a good thing? In the case of much looked forward to new baby it certainly is, but sometimes 'new' can seem unnecessary, unwanted or even jolly scary. In our

modern consumer driven society it seems essential to continually update and be updated but if what I have now suits me; do I really **want** to be updated? I liked the packaging of my favourite cereal – it helped me to find it on the shelf and I liked the flavour too; why did they have to change the recipe?

2016 seemed to be full of 'new' things; a new political scenario both in our own country and abroad involving new political leaders with sometimes very different ideas from their predecessors. What will that mean for us all in the future? Locally, we had a new head at the school, a new rector and new management of the Lord Nelson. This is 'new' at its most exciting and challenging.

Coming to a new area is a great adventure. Last Summer Festival one of the organisers of a new event said almost apologetically that she hoped the event was a success because she was only a 'newbie'. We **need** new people; they keep old traditions alive and start new ones. They inject fresh vigour, enthusiasm and energy. A big welcome to anyone new to the area!

So we can't escape 'new'! It surrounds us even if we bury our heads in the sand so I guess we just have to embrace it especially at this time of the year. So here is a challenge for you all. It has been pointed out that the front cover of Focal Point needs to be updated. Please will you all have a go at designing a new cover and send us your design either by email or through the letter box and we will seek help in selecting the best design for the March issue. No prizes I'm afraid but the satisfaction of seeing your own front cover being used. The challenge is open to anyone of any age living in Winthorpe, Langford and Holme.

Happy New Year to you all! **Annie Purday**

Closing date for the February issue is **Friday 20th January 2017**

Deliver to Annie and Nick 18, Hargon Lane or email nickwynne@virginmedia.com

LUNCH CLUB

The **February** Lunch Club will be at 12.30 p.m. on **Monday February 6th 2017** at the Community Centre.

The menu will be:



Chicken Chasseur

OR



Seafood Pie

with Potatoes and Seasonal Vegetables

-X-

Lemon Mascarpone Cheesecake and Cream

-X-

Tea or Coffee



£8 including a glass of wine

Contact Tish Applewhite (643763) if you need to reserve your place and give your choice of menu.

Thank you. Tish Applewhite

NB There is no Lunch Club in January

A very happy new year from the Lord Nelson team!

We were so proud to celebrate our first Christmas here and it was lovely to host so many at our Winthorpe Village Christmas Lunch on 13th December and our New Year's Eve party. Santa dropped in to the Nelson (on his tractor) on 10th & 11th December, accompanied by his two miniature horses Boo & (Princess) Bumble who were delighted to hang out outside and hug all the tiny humans. A big thank you to Santa Graham!



We're giving our chefs a few well-earned days off after a frenetic Christmas season, so please note:

Our bar will be open, but no food service on New Year's Day (Sunday 1st January), Tuesday 3rd, Wednesday 4th & Thursday 5th January. Normal food service resumes Friday 6th January.

We're thrilled to welcome our fabulous beautician Michelle to the pub on the first Saturday of the month, all day from 9:30am. Michelle can offer manicures, pedicures, mini facials and eyebrow waxing/ tinting. Appointments can be booked via the pub on 01636 707705.

Upcoming January events include:-

Our "Pub & Pasta" quiz night are moving to the first Tuesday of every month (Tuesday 10th January & Tuesday 7th February 2017)

Live music & Open Mic night is now on 3rd Tuesday of every month (Tuesday 17th January & Tuesday 21st February)

We continue to offer our "Silver Surfers" Lunch every Tuesday, with any Pub Classic and dessert for £9.95.

We wish everyone a very happy and peaceful 2017!

Oli, Em, Martyn & Chef David

Lord Nelson Directors

Pat's New Year Puzzle ????????

Replace the letters with digits to make the calculation correct.

$A \times A \times A \times A \times A \times (C \times C) = ABCA$ (answer under the calendar Ed)



High Street
Collingham
Newark NG23 7LB
General Enquiries/Emergencies:
01636 892156
Email: collingham.medicalcentre@nhs.net

Drs Terrill, Fearn, Li & Walker

Monday 8.00am-7.15pm
Tuesday - Friday 8.00am-6.30pm

For Appointments telephone: 01636 893956 8.15am – 5.30pm
For Prescriptions telephone: 01636 892210 8.30am – 12.00pm

In addition to our normal medical services, we can offer:

Child and Adult Immunisations, Well Person Health Checks, Travel Advice, Minor Injuries, Joint Injections and Minor Ops (including cryotherapy)

Our communication with patients relies on current information. If your personal details change, including telephone numbers, please let the practice know.
Thank you.

Out of Hours Service is provided from 111 when the surgery is closed.
Website: www.collinghammedicalcentre.co.uk



COLLINGHAM PHARMACY



YOUR local pharmacy dispensing NHS, Private and Veterinary prescriptions.

Offering a wide range of medicines, vitamins, toiletries, pet medicines and seasonal gifts.

NHS Services Include:



Medicine Use Review



Morning After Pill



Blood Pressure Measurement



Minor Ailments Scheme

High Street, Collingham, Newark, NG23 7LB

Tel: 01636 893038

email: collingham.pharmacy@nhs.net

COLLINGHAM RAMBLERS WALKS FOR JANUARY 2017

Sunday January 22nd

Wednesday January 18th

NEW WALKERS ALWAYS WELCOME

If you would like to join us on any of these walks please contact NINA WARD on ninajward@live.co.uk or 01636 678419 for more information and specific walk details.



Come along and join this friendly group!

We provide an excellent variety of walks in Nottinghamshire and adjacent counties. Most Sunday walks are between 6 and 8 miles. Wednesday walks are usually about four miles with an optional pub lunch.

Walkers should provide snacks, drinks and packed lunches if appropriate.

Suitable footwear and waterproofs are necessary. Nina Ward

News from Langford Lowfields

Huge flocks of fieldfares and redwings are feeding on the reserve at the moment, feasting on the bumper crop of hawthorn berries in the hedgerows. These winter thrushes have flown over the North Sea from Scandinavia, to come and sample the delicious delights Langford Lowfields has to offer. Stonechats are being seen on a regular basis, goldeneyes are bobbing around on the waters and our now famous bearded tits are currently being seen on an almost daily basis. These beautiful birds bred at Langford Lowfields for the first time this year, becoming the first pair to have ever been recorded as breeding in Nottinghamshire. Although bearded tits are seen in the county every year, particularly during the winter, this will have been the first time in perhaps a few hundred years that bearded tit chicks have stretched their wings in Notts. The Nottingham Post ran an article celebrating this success story and a lot of people have visited the reserve to see the birds for themselves.



Two bitterns are currently spending their winter at Langford, skulking about in the reeds, looking for fish and amphibians to eat. In time this elusive and superbly camouflaged member of the heron family will breed here, but this is dependent on the amount of food available to them increasing (they eat a lot during the breeding season!) and the coverage of reed within the wetland areas increasing too. We do a lot of work on both these fronts; we planted out 12000 reed seedlings this year and we created floating fish shelters and sinking artificial fish reefs, to provide safe havens for smaller fish. Fish monitoring work carried out recently showed the population to be dominated by pike and perch, both of which eat other fish, but there were also sticklebacks, rudd and eels present. With time the population should expand and stabilise, with the aim being that we support a good healthy fish population, great for the fish, including eels which have suffered massive declines in numbers (they are now critically endangered) and also great for the birds and otters that eat them. New signage has now been installed on the reserve, pot holes in the entrance track have been repaired and a new view has been opened up looking out from the public footpath over one of the Silt Lagoons. We have carried out reed

cutting on one of the islands in front of the Beach Hut, with the aim of stimulating reed growth next year and kingfisher perches have been installed on the edges of the same island. They should also double up as tern perches when (hopefully) the common terns nest on the gravel islands next year.

Now is the time when we start work on our annual scrub management; coppicing the blocks of blackthorn and hawthorn will stimulate fresh growth next year and with the cutting being carried out on a rotation it means we get a variety of heights/ages of scrub around the edge of the reedbed, providing a wider range of habitats suitable for a wider range of species. Bays have already been cut in the scrub that should provide sheltered areas for butterflies. Management in the woodland has also begun, the wood is dominated by sycamore trees, we plan to reduce their dominance to help increase the number of native species such as oak and elm. Getting more light coming down through the canopy should also encourage the development of the understorey and will spur on the growth of the saplings that have been planted. Some of the woodland management work is being done close to the public footpath, so you should be able to see some of the work we've carried out next time you visit.

Depending on the availability of our volunteer team we do try to have the Beach Hut welcome area open every day, so if you see or hear anything interesting on your wanderings around the reserve, please write it down in the sightings book that lives in the Beach Hut or email us

langford.beckingham@rspb.org.uk Joe Harris

(Photo of male bearded tit at Langford Lowfields by Roger Bennett)

January thought

Dear Friends

Happy New Year!

I don't know about you but I have some memories which stick in my mind as though they'd happened yesterday. One such always pops into my head at this time of year. This is it: I was out early one dark, cold and frosty morning between Christmas and New Year. Our friend's dog Grommet was staying with us and I was taking him for a walk. A sad sight caught my eye. Hanging limply from the side of a house and swaying slightly in the rimy air was a deflated Santa Claus. A few days before, it had been a comical, cheery picture of a fully inflated jolly figure climbing up towards the chimney, carrying a sack laden with presents; a sight full of



promise and excited expectation. Then it was just a sad reminder that Christmas was over and someone needed to climb a ladder, take that figure down, hose it down and pack it away for another year.

It can feel as though Christmas is over, can't it and this time of year can be disheartening, when we wrap up the baubles and lights, clean up the glitter, eat the last chocolates and look forward to a month of still short days and colder weather. Sometimes this time of year hits us hard.

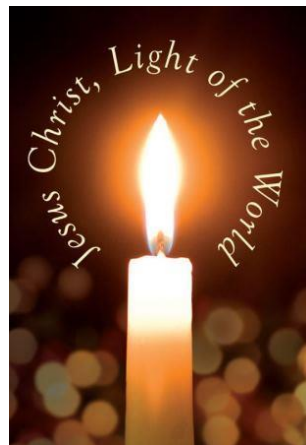
But this doesn't mean that Christmas is over.

At Christmas we celebrate that God is with us, born as a baby, and God is with us all the time, certainly after we've packed away the decorations and recycled the Christmas cards.

In the Bible there is a great message for cold, dark January days and it is this: The Life Light blazed out of the darkness; the darkness couldn't put it out. John's Gospel chapter 1 verse 5, from The Message version of the Bible.

So Christmas isn't over. In church we carry on celebrating Jesus bringing God's light into the world and on January 29th we have a service for Candlemas, when we celebrate Jesus as light in the world and bless candles which we'll use throughout the year. This service is at St John the Baptist Church in Collingham at 10:45 and everyone is very welcome to join in that service. Maybe you have a candle from home which you'd like to bring to be blessed; please do that. Then, throughout the year in church we think about what Jesus, God with us means for us now. You will always be welcome at any of our services and activities. Please get in touch if you want to find out more. I wish you a Happy New Year and a blessed 2017.

Revd Mandy



Southwell Travel Show 2017- Bigger and Better

Now entering its 6th year, the annual Southwell Travel show is set to be bigger and better than ever before. On the 21st January from 10am to 3pm, 26 of the UK's top independent operators will be exhibiting at The Saracens Head in Southwell to share their knowledge and offer inspiration for exciting holiday destinations for 2017 and beyond.



From Jersey to Japan, all destinations will be covered and you'll find the right person to talk to. Be inspired to see the world with adventure holiday specialist Exodus; enjoy the luxury of VIP door to door travel with Titan; experience train travel with a difference with Great Rail Journeys or enjoy a tailor-made tour through Asia with Transindus, through China with Wendy Wu or New Zealand

with Silver Fern.

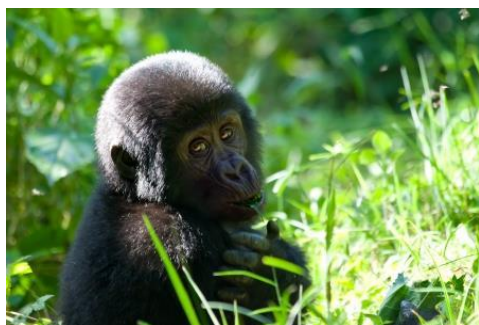
Travel experts attending this year include Saga, Kirker, 1st Class Holidays, Classic Collection, Veloso, Serenity, Typically Italian, Sunvil and Premier and also river and, for the first time, ocean cruise

operators such as Ama, Seabourn and Holland America.



There will be scheduled presentations during the day at the Hyde Barker Travel Agency, from Riviera Travel, Silver Fern Holidays, Hurtigruten and African Pride.

Take advantage of on the day show offers and don't forget to use £50 voucher against the cost of all holidays featured at the show (see advert.)



Booking your holiday through Hyde Barker ensures you won't waste precious time searching through hundreds of internet sites to find your perfect holiday; instead let the agency's long standing team do what they do best –

imparting their insider knowledge, worldwide destination expertise, and well-kept travel secrets, ensuring an unforgettable holiday experience, wherever the destination!



**SOUTHWELL
TRAVEL SHOW
2017**

Hosted by Hyde Barker Travel

Tel: 01636 816 262

Saturday January 21st

Saracens Head Hotel 10am - 3pm

Exclusive show offers - Expert advice - Presentations - Holiday raffle

Exchange this advert for a £50 holiday voucher at the show or at www.hbtravel.co.uk

MY RUBBISH WALK

During a one hour walk around Winthorpe with my granny this week, I collected all of the rubbish shown in these pictures. We found even more by the river, not pictured because we put that in the bin by the gate.

Rubbish like this can kill or injure animals, pollute the soil and spoil the place we live in. So, please think carefully about where you throw away your rubbish.

My Tips for Protecting The Environment

1. Avoid packaging when possible. Buy unpackaged groceries and use shopping baskets or fabric shopping bags.

2. Don't drop rubbish but take it home. It's really not much work.

3. Separate your rubbish at home for re-cycling.

Milo Wefers (aged almost 11)

P.S. All the glass was found on the skate park!

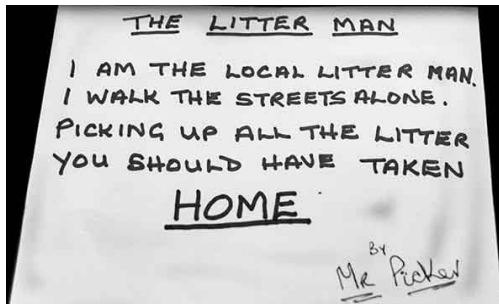


(Milo's granny lives in Winthorpe and he lives in a village in Bavaria where Milo says there is the same problem to some degree. Thank you for your observations, Milo.

Good ideas for New Year Resolutions! Ed)



On a similar theme there was a very striking tree decorated with litter from Collingham at the Christmas Tree Festival in Newark with a message to us all. Ed



Photos by Paul Fairclough



JUNIOR TENNIS COACHING RESUMES IN THE NEW YEAR FOR A 5 WEEK COURSE

(These are indoor sessions aimed at primary school children)

WINTHORPE COMMUNITY CENTRE

STARTING TUESDAY JANUARY 10TH 4-5pm

£4 / SESSION - all equipment provided

(Free 1st session for new participants)

Suitable PE kit required

LTA LEVEL 3 COACH JON PENNEY

NEW PARTICIPANTS ALWAYS WELCOME

NO EXPERIENCE NEEDED

**Come along and have a go – you may be the next Andy Murray
or Jo Conte!**

FURTHER INFORMATION FROM NINA WARD

01636 678419 or ninajward@live.co.uk





Winthorpe & District W.I.

Christmas Party Time: The President, Virginia Seager, welcomed 30 members, Jane Jefferson, the President of the Nottinghamshire Federation of W.I's, the Office Staff from County House and 2 visitors from Collingham W.I. We were also delighted to welcome Dys Gold one of our original members. The evening started with the singing of Jerusalem, accompanied by Sylvia Lloyd on the piano.

The members brought along an array of wonderful savoury dishes and delicious desserts and along with a glass of wine or two the Christmas Party got underway.

Again this year, Christine Pattinson had kindly compiled a Christmas Quiz and the prized was won by Diana Kitson's Table.

Each member took home a Secret Santa present (not to be opened until Christmas Day) and the Raffle was drawn with an excellent assortment of prizes to be won.

Forthcoming Events: A trip to Averham Theatre on Tuesday 24th January 2017 to see the comedy 'Ladies Down Under.'

The next meeting will be held on Thursday 12th January 2017 back as

usual in the Village Hall. Newark Community First Aiders will be giving a talk and demonstration on First Aid. The hostesses will be Mary Harrop, Stella Hopewell and Moira Williams. The members of Winthorpe W.I. would like to take this opportunity to wish everyone a very Happy New Year.



ANNOUNCEMENT

ON WEDNESDAY 8TH FEBRUARY 2017 WE WILL BE HAVING AN OPEN MEETING IN THE COMMUNITY CENTRE WHEN THERE WILL BE A TALK BY A SURVEY GEOLOGIST- VICE PRESIDENT OF THE GEOLOGISTS ASSOCIATION- ON MAPPING ROCKS, 'WHAT'S BENEATH YOUR FEET' (INCLUDING WINTHORPE). LADIES AND GENTLEMEN - ALL WELCOME Sheila Palmer

(WI Xmas tree photo by Paul Fairclough)

WINTHORPE WITH LANGFORD PARISH COUNCIL

How to use a Defibrillator

I am pleased to inform the village that there are now two Automatic External Defibrillators (AED's) located in Winthorpe. One is at the Village Hall (access code CY543) and the second is being housed



temporarily inside the Community Centre until enough funds have been raised to buy the external box. Once this has been purchased we will communicate further access details.

I thought it was appropriate to give a brief guidance on how to use the AED's. (They are both the same make and model)

Once the ON/Off button is pressed, which activates the AED's, the units will talk you through the entire process.

The AED's will give commands throughout the process as follows:

- Defibrillation Pad Related Voice Prompts
- Motion/Interference related voice prompts
- Analysis related voice prompts
- Shock related voice prompts
- No shock required voice prompts
- Post shock CPR voice prompts

It should be noted that once the AED has determined that the defibrillation pads, which have been attached to the patient's chest, are making a good connection, the AED will start an ECG rhythm analysis. Where to locate the pads is shown on the back of the AED.

The unit analyses the ECG signal and determines whether a "shock" or a "non-shockable" rhythm is present.

If the AED's ECG analysis has determined that a "shock" is required, the unit will automatically charge in preparation for the "shock" delivery.

The units will continue to talk you through the process at all stages and if the unit detects that the heart rhythm has changed to one that does not require a "shock", the unit will advise the operator.

Both units contain scissors, wipes and razors for use if required.

Lee Cammack – Chairman

NEWARK COMMUNITY FIRST AID

Serving Newark and District

Registered Charity Number 1152694

This is our report to people in Newark and surrounding villages, detailing our activities, achievements and plans for the future.

Newark Community First Aid is a charity formed in 2013, operated by volunteers for the benefit of the local community. The

objectives of the charity are to provide first

aid training, first aid cover at local events and associated work. To ensure that everyone can learn first aid and that every event can benefit from high quality first aid cover, we provide the vast majority of our services FREE of charge.

The only area of our operations that we charge for is workplace first aid training, where our policy is a 'fair price for quality training'. We operate in Newark and a 15-mile radius of the town.



Community Training

One of our main objectives is to increase the number of people in the community with first aid skills so that more lives can be saved and suffering can be reduced. We therefore developed a programme of short (2½ hour) first aid courses aimed at developing key lifesaving skills.

We have now completed our third year and are pleased to report that we have trained 2,281 local people on our FREE courses. We have held courses in Newark and 46 surrounding villages, ensuring our training is accessible to all. Our courses cover adult & paediatric life support and basic 'home' first aid. As we enter our 4th year we would like to encourage many more people to attend. If you belong to a local community group, charity, sports club or simply have a group of friends who would like to receive FREE training please contact us to arrange your course.

Feedback from students on both our Community and Workplace courses shows 96.4% rate our courses excellent and 3.6% rate them good. No one rates them average or poor (based on 90% return of feedback forms.)

Event Cover

Our volunteers provide first aid cover at local events every week of the year including Christmas Day, when we help the Salvation Army provide a meal and celebration for those less fortunate in our community.

We provide cover to many sporting events such as rugby, football, cycling, athletics, netball and cross country running. We attend many equestrian events, village shows, music events such as Newark Blues Festival, Wellowfest and major events on Newark Showground such as the Nottinghamshire County Show and Robin Hood Country Show. If you need our assistance at an event, please get in contact early.



Volunteers and Internal Training

Our volunteers are the most important part of our operations. Their dedication and enthusiasm ensure we deliver excellent services to all sectors of the community. In the last year ending June 30th 2016 we have seen an 18% increase in our volunteer numbers but we need many more if we are to continue to meet the growing demand. If you are

over 16 years of age, have some time to spare and would like to learn new skills, then we would be pleased to hear from you. We provide full training in a friendly environment; we provide your uniform and full insurance.

To join, our members complete a joining form and health declaration, they then have a criminal record check by the DBS as part of our Safeguarding Policy. Once this is completed new volunteers receive a range of training across a number of courses such as First Aid at Work, Infection Control and Moving and Handling.

In addition to the main courses our volunteers can train weekly at our Monday evening training at the Newark Academy in Balderton. Members can move on to become advanced first aiders after a period of time developing their skills.

Development of Resources

In 2015/16 we introduced a cycle response unit capable of passing through crowds to attend incidents. We also purchased a 4x4 Response Vehicle to ensure we can respond and if required extricate a casualty when ground conditions are poor. This is particularly important as we cover many rural events. Due to the continuing support from local people and organisations in the last year we have been able to purchase additional splinting & resuscitation equipment, pain relief kits and defibrillators.

Moving Forward

To be able to meet the growing demand for our services we need more volunteers. We also need to replace our Mobile First Aid Unit which was purchased second hand when the charity started, plus with demand rising we would like to purchase an additional Mobile Unit. We are therefore organising an appeal to raise £20,000 over the next 18 months to allow us to make these purchases. The vast majority of our funding comes from donations made by event organisers and the general public. If you are able to help by making a donation or organising a sponsored event, it would be greatly appreciated. On line donations can be made at 'www.justgiving.com/ncfa' ; cheques can be sent to our postal address. **To contact us or keep in touch:**

By Post: 6 Mount Road, Balderton, Newark NG24 3HF

Email: newarkcommunityfirstaiders@hotmail.com

Telephone: 01636 683202 (Mobile) 07973 904808

Website: www.newarkcommunityfirstaid.co.uk

www.facebook.com/newarkcommunityfirstaid

Old Text Messages (Part 6)

A continued Analogy by Bob Warriner

'They saw the King in 1909'



Another view of the hill, (1) this one printed by local stationers Davage who some will remember were located in Newark market place. **Note:** the condition of the neatly trimmed grass verge and footpath courtesy of local council highways services over 100 years ago ! Not a pothole in sight !

The Bawtry postmark date is 1909 and the message reads; *"My Dear Gladys, Will you please ask Scoralis to send a cab to G.C. Station at 20 minutes to six. Hope you are going on all right; Donald will cycle together with father & Mrs. B. will come with me. You can come down and meet us if you like. Help Auntie all you can dear. We saw the King splendidly this morning. Father has been fishing all afternoon. Much love to all, Mother & Father..... Father cycled to Newark & Back yesterday"*

Sent to Miss G.L. Shaw, 29, Chapel St, Wath-on-Deerne, Rotherham.

The mention of seeing the King "splendidly" is about being witness to a visit to Newark by King Edward VII on 9th September 1909 (confirmed by the postmark.)

*from Help Annie and
He saw the King splaydilly
his morning. Father has been
much love*

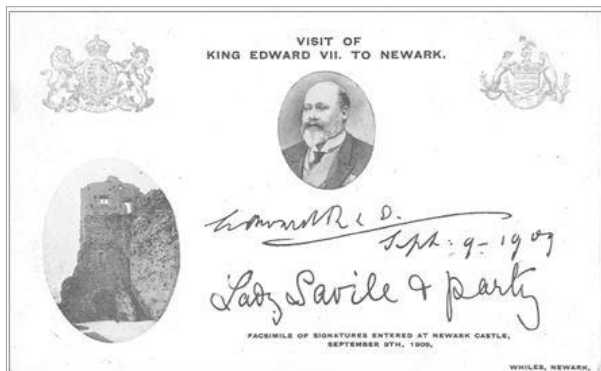
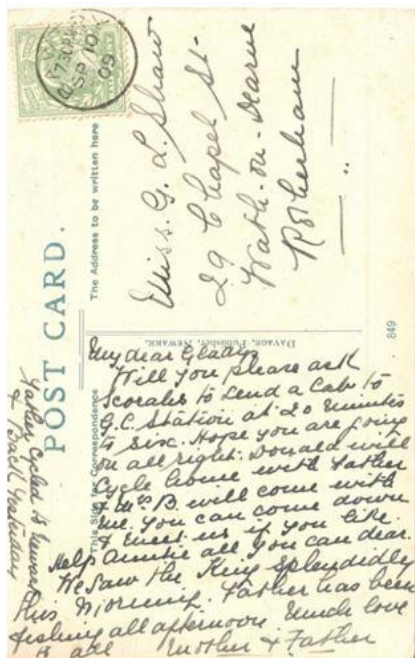
The Nottingham Evening Post reported on 10th Sept 1909 that there was much excitement in Newark yesterday morning consequent on a rumour that the King

would motor through the town on his way to East Stoke. He did so and made an impromptu stop to inspect the castle and grounds with Lady Savile and friends from Rufford Abbey, a place where he was a regular visitor, enjoying a mutual love of horse racing with the Saviles.

The King was to pass away following year but his visit left a great impact on one person, eventually leading to a dark event a few years later.

The King's unexpected visit meant that it was left to the castle custodian Mr John Mountney to guide the Royal Party around the historic attraction. The tour was enjoyed by all and the King signed the visitor's book much to the delight of a proud Mr. Mountney, a man who thrived

on his work as keeper of the castle, having made it his showpiece. Soon afterwards he decided to set about producing a commemorative postcard to mark the occasion. (example shown below).



But the Borough Council were displeased and deemed him to be rising above his station and thought the idea distasteful. They ordered him to surrender the signed page so that it could be displayed in the Town Hall.

In the following years the relationship between Mr. Mountney and the council deteriorated and on the 12th Feb 1912 they took away his collection of artefacts which he'd amassed over the years. He had used them to form an unofficial museum display within the castle to give the visiting public a greater appreciation of castle's history. The council said they were to be used in a new museum that was opening in the town.

This was the last straw for John Mountney and the next day he went to work but did not return for his usual lunch. His worried wife Elizabeth went to look for him. She tragically found him in the Southwest tower lying dead having taken a drink of arsenic based weed killer. A note he left read "**Might is not always right! Broken hearted**". The council had paid him £2 for his collection but seems it was not the money, but the loss of ownership and pride in his beloved work that caused him to take his life.



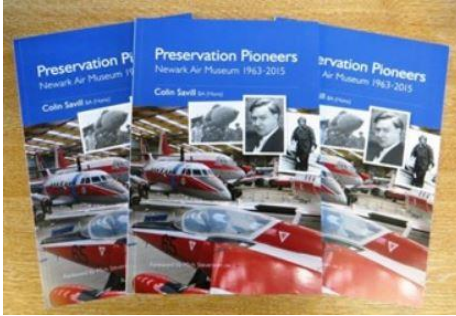
John Mountney (left) seen here feeding the pigeons in Newark Castle grounds.

The town marked the Royal visit by planting an avenue of Lime trees along the Great North

Road from the Castle station northwards towards Muskham.

The King never knew about the unfortunate affair having passed away two years before John Mountney's tragic death. John Mountney is buried in Newark Cemetery. Bob Warriner

Newark Air Museum News Release: Museum History book published



Back in the early 1960s the founders of the Newark Air Museum were in the vanguard of organisations in the UK that aimed to save and eventually display to the public items from the country's aviation heritage.

After several years of detailed research, Colin Savill BA (Hons) has written a new history of the Newark Air Museum. The book has just been

published by the Newark (Notts & Lincs) Air Museum, which is located on part of the former RAF Winthorpe airfield site.

The book is entitled 'Preservation Pioneers Newark Air Museum 1963 – 2015' and the book charts the museum's history since its founding days back in 1963 through to 2015. The first airframe remains acquired were those of a Westland Wallace biplane that was saved from woods near RAF Cranwell, Lincs.

It has been compiled in a diary format to illustrate how the museum has developed from saving a single airframe in 1963, through to holding a diverse collection from across the history of aviation to become one of the largest volunteer managed aviation museums in the United Kingdom.

The book (ISBN 978-0-9500341-8-8) is in a softback format; 148 pages (paper weight: 130gsm); circa 50 black & white photographs and more than 115 colour photographs; and includes a Foreword by the museum's President, Mich Stevenson OBE DL.

Copies of the book are now available to purchase from the Museum Shop and they cost £12.00 each. Anyone wishing to purchase a copy can visit the museum between 10am and 4pm daily and you do not need to pay a museum admission fee if you just wish to shop. Copies are also available by mail order - please check for rates; telephone 01636 707170. **Howard Heeley**



ALL SAINTS
WINTHORPE
CHURCH NOTICES

A new year lies waiting before us. Over the next twelve months what new things are you planning to do? More importantly what old things are you planning to repeat? The new year is a time of reflection on who you are and who you would like to be. New year's resolutions are made and more often than not broken within a few weeks. Try to set your targets at a realistic level!

Last month saw the first services throughout our group from our new rector, Revd Mandy. I hope that many of you were able to attend these to see her in action and form an opinion. If you haven't been to see her in action yet then please do come along to one of the Communion Services over the next few months. You never know, you might enjoy the experience and decide to become a regular worshipper (and thereby put a tick next to one of your resolutions).

Over the Christmas period our church was once again transformed by the flower ladies into a place of beauty and wonder. On behalf of the PCC I would like to thank you for your unstinting efforts. Your arrangements provoked many comments at the various Carol Services and the early "Midnight Mass."

If you would like to be more involved with the church then there are plenty of opportunities for you. If you are not able to attend our services then you could always help in other ways. We are constantly looking for new volunteers for cleaning, brass cleaning, flower arranging, bell ringing etc. If you are interested then please get in touch with a member of the PCC.

On 29th January there will be a service for Candlemas at Collingham St John the Baptist, where an altar candle from each of the churches will be blessed for the coming year ahead. As Revd Mandy has mentioned elsewhere in this issue, everyone is welcome to bring along a candle from home to be blessed as well.

Ian Hasman on behalf of Winthorpe Church PCC (01636 679105)

Church Services for January



Sunday 1st	09:00	Holy Communion	Holme
Sunday 8th	10:30	Holy Communion	Winthorpe
Sunday 15th	09:00	Morning Worship	Langford
	10:15	Morning Worship	Winthorpe
Sunday 22nd	17:00	Evening Prayer	Winthorpe
Sunday 29th	10:45	United Group Holy Communion for Candlemas	Collingham St John the Baptist

The Church Bells may be rung for any of the Winthorpe services. The bells may be rung on Friday evenings between 7.00 and 9.00pm for practice. If you are able to ring or would like to learn how to ring then please get in touch with the Tower Captain, Ian Hasman, on 01636 679105 or e-mail him at

I.hasman@ntlworld.com.

Church Cleaners – Miss Applewhite

Church Flower Ladies – Thank-you for your marvellous arrangements. They certainly brightened up the church over the festive period.

Removal of Flowers – 2.00pm on Tuesday the 3rd January. Please call Sylvia on 703271 if you need to arrange an alternative time and/or date.

Sylvia Lloyd



Monday 2nd	Green Bin (even though a Bank Holiday!)
Wednesday 4th	School opens
Monday 9th	Silver Bin
Tuesday 10th	Junior Tennis begins CC 4-5pm
Thursday 12th	WI Meeting 7.30pm VH
Monday 16th	Green Bin
Wednesday 18th	Garden Club Christmas Social CC
Thursday 19th	Parish Council Meeting 7.30 pm VH (Finance Committee 7pm)
Saturday 21st	Southwell Travel Show Saracens Head Hotel
Monday 23rd	Silver Bin and Brown Bin
Monday 30th	Green Bin

NB BIN COLLECTION IN HOLME VILLAGE ON FRIDAYS!

‘Village organisations and local bodies – if at any time you would like to get in touch with a village contact, why not try the village website.’ **www.winthorpe.org.uk**

PAT'S PUZZLE ANSWER

$$2 \times 2 \times 2 \times 2 \times 2 \times (9 \times 9) = 2592$$

How Pat worked out the solution! Whilst gardening.....

"It is true. I knew that A couldn't be 1 so it had to be 2.

B and C then just fell into place. I tried to do it whilst sitting in the armchair. I just couldn't fathom it out. I then went into the garden with my kneeling pad and small fork to go and clear my mind and then the penny dropped. I rushed into the house and jotted the numbers down. I can't always do it this way!"

