

FOCAL POINT

ISSUE No.430



2016

Ed's Comments

When I first thought of editing

Focal Point a neighbour said, "What on earth do you want to do that for - no-one ever reads it!" After explaining how useful and informative Nick and I had found the magazine when we were first thinking of moving to Winthorpe and later after we had moved in, I decided to give it a go. I felt it really was a 'Focal Point' for ideas, thoughts and memories, opinions, activities and information for the whole community. This issue proves that you certainly **do** read it and respond to what is written here.

September's magazine contains a lovely article from Holme in response to my plea last month. Thank you Holme for responding! It contains photos and thanks to you all for the Summer Festival in Winthorpe. It contains people's musings and grumbles. It gives information about forthcoming events in the community and if you want a job done around the house or garden there are details of local firms to contact. I was recently asked to put page numbers back in so that a reader could make a note of which pages the information which she required was on. Success I thought! Keep reading and responding. This is **your** publication.

New traditions have been started in Winthorpe. We now have a Photography Challenge and a Scarecrow Competition. To enjoy the photos turn to the report on the Village Festival. Tuesday lunchtimes could become a tradition too. Nick and I enjoyed our 'Silver Surfer' meal at The Lord Nelson last Tuesday and it was good to see others doing the same. For details see page 20!

Annie Purday

Closing date for the October issue is **Friday 16th September**

Deliver to Annie and Nick 18, Hargon Lane or email

nickwynne@virginmedia.com

LUNCH CLUB

The **October** Lunch Club will be at 12.30 p.m. on Monday October 3rd at the Community Centre.

The menu will be:



Honey Roast Ham with Pineapple
in Red Wine Sauce
OR

Jacket Potato with Prawns
and Tuna Mayonnaise



with Potatoes and Seasonal Vegetables

-x-

Lemon Mascarpone Cheesecake with Cream

-x-

Tea or Coffee



£8 including a glass of wine

Contact Tish Applewhite (643763) if you need to reserve your place and give your choice of menu.

Thank you. **Tish Applewhite**

NB The **September** Lunch Club is on **Monday 5th September** as advertised in last month's Focal Point.



The Collingham Singers

in concert

at All Saints Church Winthorpe

on Saturday October 1st

7p.m.

**Tickets: £5 including interval
refreshments**

**Ticket enquiries: Available from Tish Applewhite (01636 643763)
or any member of the Winthorpe PCC**



SUMMER FESTIVAL 2016

On behalf of the Festival Committee, I would like to thank everyone involved in the above event on the 23rd July. In preparation - from raising the bunting and sign, to the running of stalls, games, sports, art and photography exhibitions,



displays, raffle and refreshments, then staying to clear up afterwards! All those who made a contribution of time and effort, however big or small, ensured a successful day. Our thanks go to Oli and Emilie from the Lord Nelson who came along to open the event and for sponsoring and

judging our new Scarecrow Competition! Thank you to the Newark Firecrackers Cheerleading Squad, who performed a skilful display for everyone's enjoyment. Also thanks to the U3A Ukulele Band, who entertained us during the afternoon.



The new Photography Challenge and Scarecrow Competition proved to be a success. Here are the results:

The Photography Challenge

1st Pat Finn

2nd Bob Warriner

The Scarecrow Competition

1st “Superman” by Kika and Viktor Florin-Simeonn – ages 9 and 6



2nd “The Dark Knight Rises” by Anthony Vancampen – age 7
3rd “Janna” by Aliya Zylinski – age 5.



Finally, thank you to everyone who came to support the Festival and spend money! I hope you had a good time.



The monies raised will be published in due course on completion of the final account.

Sue Masheder

(Congratulations to the organisers on a super Summer Festival! There are lots more photos of the Festival on the Village website. Ed)

Photographic Challenge

Many thanks to all who took part in the photographic challenge at the summer festival in July.

We had some amazing entries and raised a little money for the festival charities. Huge congratulations to the winner Pat Finn whose wonderful photograph of the Lord Nelson on a snowy day was admired by many.



In a very close second place was Bob Warriner who also kindly donated some photographs to sell.



I hope this has encouraged you all to dig out your cameras and start snapping for next year's challenge! **Amanda Ramsay & Les Murray**

THANK YOU....

Following the recent Winthorpe Summer Festival we would like to say a big 'Thank You' to all those who supported the Raffle with contributions and buying tickets. Thanks also to Newark Stroke Club (Coffee & Chat) for running the stand with proceeds to Beaumont House.



We would also like to thank the Classic Car and Miniature Steam enthusiasts who made our display so varied and interesting. Thanks to you all...

Vivienne and David Green

A LITTLE NEWS FROM HOLME

'Holme' means an island, not necessarily surrounded by water, but in the case of Holme it was marshy land.

It is a quiet, pleasant village where the main occupation is the farming of cattle, sheep and arable crops.

There is much interesting history at Holme Church, dedicated to St. Giles – no pub, no school, no shop but the medieval gem of St.



Giles Church where monthly services are held. Jolly Harvest Festivals and Christmas Carols and 'afters' are enjoyed by many.....

We have just celebrated our oldest member's 100th birthday. Alf Cobb is listed in the Guinness Book of Records for growing extra-large vegetables. Alf was also responsible for showing cattle at Shows and Fatstock Markets and obtaining many prizes for the Hallam Farm, plus presenting best corn samples at local Shows.

From time to time Holme enjoys a typical Country Wedding at St. Giles Church, often decorated 'country style' and open afterwards for the public to enjoy.

Fishing Clubs use the River Trent from Winthorpe to Collingham and many matches are held at Holme – a lovely relaxing pastime.



Holme residents and children do, of course, come to

Winthorpe and support the many events whenever possible.

From Churchwardens Doreen Hallam and Nigel Priestley



400th Anniversary of the Charity of Thomas Brewer



At **7.30pm on Wednesday 14th September** at the Village Hall we are creating history by holding the first AGM of the Charity in 400 years. These, and other changes, have been made possible through extended negotiations with the Charity Commission.

We hope you will come to the meeting to learn how these changes can affect the residents of Winthorpe, Langford and Holme. By way of a small celebration of the 400 year history there will be wine and nibbles. Please come. Peter Foden, Trustee

Winthorpe Linedancing will be starting again in September. We are a friendly group who meet once a week for an hour with the aim of raising money for the community centre, enjoying each other's company and having a good time dancing to a variety of music. There is no pressure and all abilities and ages are welcome. We meet in the



Community Centre every Monday from 7pm to 8pm starting on 12th September. It would be great if you could join us and please ring me if you have any questions. See you in September. Joan Lord 01636 682304

Piano & Vocal Tuition

An informal and friendly way of learning Piano, Singing or Musical Theatre. Graded examinations available. 100% Pass Rate

Contact Felicity on 01636 893608 Collingham | pianolessonscollingham@gmail.com

30 Years performance and teaching experience. CRB checked (Enhanced)

Garden Club

The club made its usual contribution to the village festival with skittles and tennis ball target game. The sunny weather encouraged many participants, particularly among younger people and as a result we took £74.00. As in years past I need to thank everyone who helped, both members and non-members, for their good humoured contributions. Particular thanks to David Tingle for the loan and transport of the games, Des Allen for providing straw bales and Brian Wright for transporting them. Whilst prizes were not huge the games generated a lot of healthy competition.



On July 27th we had an outing to Sandringham Flower Show. Contrary to the weather forecast, the day proved to be sunny and hot - too hot for comfort in the marquees, but the party dispersed among the huge crowds, individuals heading for the focus of their interest. With the diversity of plants, produce, a vast array of stalls, live band music, equestrian events, fairground rides, steam engines, a display by the Red Devils and more, not forgetting an appearance by Prince Charles and Camilla, there was something for everyone. On the homeward journey we stopped for a marvellous evening meal at the Queens Head at Kirkby La Thorpe. This perfectly rounded off a wonderful day and once again Julie Parker must be given our thanks for organising it.

Our speaker programme commences on September 21st when guest Mike Davey takes as his subject The South Downs Way. Ian Wilson

Community Gardening Day

After the rain ruined our last gardening day we have decided to have another crack at it on the 10th September 9.30am - 12.00, to meet at the Community Centre. Thanks to the few hardy individuals that turned up last time; hopefully you will come back again!

We will provide refreshments in the form of tea and biscuits so just bring along a spade or fork, good footwear and gloves and have some fun while helping the village look its best.

Children are more than welcome but must be adequately supervised.

In anticipation Amanda & Sue

GIANT SUNFLOWER COMPETITION

We hope everyone has had a fantastic summer holiday, and enjoyed the (mainly) good weather. Hopefully your sunflowers have appreciated all that sunshine too – how are they looking? Do you think you might have a winner? Remember to measure your tallest sunflower as soon as the flower is fully formed – after flowering finishes (and the seeds start to form) the weight of the large head starts to bend the flower downwards. Measure from the soil level to the highest part of the flower. Keep a note of the height and e-mail it to us at:

winthorpesunflower@hotmail.co.uk

We can't wait to hear from you and to find out who will win one of shiny winners' trophies that we will be presenting at school.

The competition closes on Sunday 11th September, so don't forget to e-mail us on or before that date.

Please e-mail even if you're pretty sure it's not going to be a winner, as we'd like to know how many people took part and how they got on.

Photos would be great too – we usually make a slideshow of everyone's efforts for our visit to school to announce the winner – the children love seeing their photos up on the “big screen”!

GOOD LUCK! Liz & Charlie Ferreira



Seasonal Flu Campaign 2016

We will be holding 2 Saturday morning flu clinics on
Saturday 1st October 2015, from 8.30 am – 12.30 pm
Saturday 29th October 2015, from 8.30 am – 12.30 pm

These are appointment only clinics. Appointments will be available to book from mid-August. Please contact the number below, ask at Reception or book using Systmonline if you are registered for this service.

For Appointments telephone: 01636 893956 8.15am – 5.30pm

Website: www.collinghammedicalcentre.co.uk

E-Mail: collingham.medicalcentre@nhs.net



COLLINGHAM PHARMACY



YOUR local pharmacy dispensing NHS, Private and Veterinary prescriptions.

Offering a wide range of medicines, vitamins, toiletries, pet medicines and seasonal gifts.

NHS Services Include:



Medicine Use Review



Morning After Pill



Blood Pressure Measurement



Minor Ailments Scheme

High Street, Collingham, Newark, NG23 7LB

Tel: 01636 893038

email: collingham.pharmacy@nhs.net

MINI TENNIS AT WINTHORPE COMMUNITY CENTRE TENNIS COURTS RESUMES IN SEPTEMBER FOR A 6 WEEK COURSE

(These are fun outdoor sessions aimed at primary school youngsters)

STARTING TUESDAY SEPTEMBER 13TH 4-5pm

NEW PARTICIPANTS ALWAYS WELCOME

LTA LEVEL 3 COACH JON PENNEY

£4 / SESSION - all equipment provided

(Free 1st session for new participants)

FURTHER INFORMATION FROM

NINA WARD 01636 678419 or

ninajward@live.co.uk



COLLINGHAM RAMBLERS WALKS



FOR SEPTEMBER 2016

Sunday September 11th Torksey 7 miles

Wednesday Sept 14th Car Colston 4.5 miles

NEW WALKERS ALWAYS WELCOME

If you would like to join us on any of these walks please contact NINA WARD on

ninajward@live.co.uk or 01636 678419 for more information and specific walk details.

Come along and join this friendly group!

We provide an excellent variety of walks in Nottinghamshire and adjacent counties. Most Sunday walks are between 6 and 8 miles. Wednesday walks are usually about four miles with an optional pub lunch.

Walkers should provide snacks, drinks and packed lunches if appropriate. Suitable footwear and waterproofs are necessary.

Nina Ward

Dog fouling is an ongoing problem in Winthorpe.

I've received complaints from residents in Gainsborough Rd this month. **Please help to tackle this problem! Ed**



COLLINGHAM SHOW & PLOUGHING MATCH 2016



Saturday 17th September - Begins 9am

Larksfield, Newark Road, Collingham, NG23 7RD

By kind permission of Mr and Mrs C T Sheldon

FUN FOR ALL THE FAMILY with a Companion dog show, bouncy castles, face painting, livestock, vintage vehicles, horticulture, ploughing, archery, traditional games, plashing, tug of war, ridden horse and pony classes, trade stands, Falconry display, Tally Ho marching band,



refreshments, raffle, Collingham Fire Service demonstration, rural arts and crafts and weather permitting:

Battle of Britain Memorial Flight Fly Over

CHILDREN U13 FREE* (*if accompanied by an adult)

Entrance prices: £6 adults, £5 Seniors, 13-17yrs £4.

FREE CAR PARKING

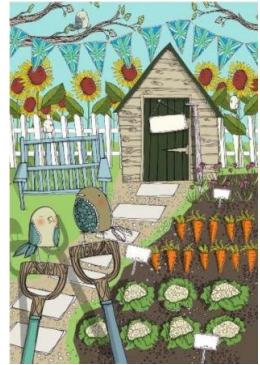
For further information visit

www.collinghamshow.com

Winthorpe Allotment Association

Late Summer Report

The village allotments are now well established and we have been very fortunate with the weather - some rain and lots of sunshine has ensured good growing conditions. Allotment holders have been enjoying bumper crops of onions, garlic, soft fruit, courgettes and artichokes. The pumpkins are swelling and cabbages hearting up ready for autumn picking and eating. Not only have we had the pleasure of truly-freshly picked fruit and vegetables this year, but between us we grow dozens of different varieties that you simply can't buy in the shops – your own allotment really can be better than Harrods and cheaper than Aldi!



Would you like to come and join us on your own allotment?

Whether you are an old hand or completely new to growing fruit and vegetables, we currently have a couple of vacant plots available for new members. Priority is given to the residents of Winthorpe, but if we have no one on the waiting list we are happy to offer plots to people from outside the local area. Enthusiasm and a bit of regular time and effort are much more important than previous experience and we can offer practical help and advice to get you started.



We are a very friendly association and look forward to welcoming new members of all ages and experience levels. If you are interested in joining us, please email Louise at louise@homeatgrovehouse.co.uk or leave a message on 01636 701947 and one of us will be delighted to show you around - it's unlikely you will come away empty-handed!

Louise Lyons, Secretary.

LETTERS TO THE EDITOR

FIREWORK WARNING!

Dear Editor,

Following the recent party held in the village, I am writing to make a polite request for anyone planning a firework display at a time of year other than Bonfire Night, to give a warning to villagers. The noise from fireworks is dangerous and terrifying for animals, who should be kept indoors on such occasions.

After the very loud display at the end of July, my cat, who was outside at the time was extremely traumatised and has not been the same since. Please think of our pets at your party times. Thank you.

A Winthorpe pet lover

I would be very happy to put a 'firework warning' in Focal Point at any time other than Bonfire Night and New Year's Eve. My two dogs were very upset and other people in Winthorpe have expressed concern too. Ed

A question about speeding - Whose responsibility is it?

Dear Editor,

It is sad to think of the necessity of having people lurking with speed cameras reporting drivers exceeding 20 mph to the authorities.

Whereas we can understand it is necessary to have an advisory speed limit during school hours we think the time and money would be better spent encouraging parents delivering their children to school to give more consideration to other road users. They could be asked to park properly; to not open doors without checking for oncoming traffic; to offload their children on the kerbside and not the roadside of the car, to not let their children wander into the road whilst talking to other parents and generally to give more consideration to the amenities of the residents of the village. There again, I suppose the parents mostly affected would not be resident so will not see this letter – unless the new headmaster of the school draws it to their attention.

Name and address supplied to the editor



HEDGEHOG SAGA!



After reading in last month's edition about Winthorpe's hedgehog population I personally have to claim to having two resident characters – Boris and Morris! They are not even afraid of the next door cat when eating. It is costing me two large bowls of dog food daily. They love the canine light variety and obviously the bowl of ice-cold water complete with ice cube!

They arrive about 8pm and my grandchildren love looking at them at mealtime in front of the lounge window.

So please take care with speed down

Hargon Lane as well. I would hate my little newcomers to come to harm. PS I shall soon be making a little home ready for the winter so hope they think they have a desirable residence ahead of them.

Wanda Payne

PAT'S PUZZLE

There were twenty ears of corn in the corner of a barn and a squirrel carried them all to her nest. On each journey she had three ears. How many journeys did she take? (Answer under the calendar.)



THE LORD NELSON

We're having a busy summer here at The Lord Nelson. Thank you to everyone in the village for their continued support. We are lucky to have such lovely locals and continue to listen carefully to all feedback. Our private dining room is currently under construction and will be available for private parties and functions from October.



Our sunset yoga, smoothie and super-food salad evening on Wednesday 17th August proved to be very popular and we've been over-booked for pub quizzes to date. We'll be making this a regular event on the first Wednesday of every month (7th Sep, 5th Oct, 2nd Nov and 7th Dec.)

£5 entry with supper, and a £50 first prize.

We'll continue to offer our "Silver Surfers" lunch deal every Tuesday (£9.95 for two courses and tea/coffee) and we'll also be making our Steak & Grill evening a weekly evening, moved to a Tuesday evening. Buy any two dishes from our Grill menu and receive a free bottle of house wine.

Finally, we'll shortly be pulling on our waders and clearing out our brook as we're delighted to invite you to our annual duck races - also featuring a BBQ, Bouncy Castle with dragon slide and ice-cream station - from 4:00pm on Sunday 28th August. Families most welcome.

Wishing you all a very happy and peaceful final few weeks of the summer holidays.

Oli, Em, Dave & Martyn

Tel 01636 707705

www.lordnelsonwinthorpe.co.uk

thelordnelsonwinthorpe@gmail.com

[instagram.com/thelordnelsonwinthorpe](https://www.instagram.com/thelordnelsonwinthorpe)



Worried about your spelling abilities?
Then come and join the rest of us at our
friendly Scrabble club.

Every Friday afternoon from 2 til 4
18, Hargon Lane, Winthorpe
Phone Annie or Nick on 658347

The Importance of Walking

Walking can add minutes to your life. This enables you to, at the age of 85, spend an additional 5 months in a nursing home at £3000 a month.

My grandpa started walking five miles a day at the age of 60. Now he is 97 years old and we don't know where he is.

I like long walks, especially when they are taken by people who annoy me.

I have to walk early in the morning before my brain figures out what I am doing.

I joined a health club last year; spent £400. Haven't lost a pound, apparently you have to go there.

Every time I hear the word 'exercise' I have to wash my mouth out with chocolate.



The advantage of exercising every day is so that when you die they can say, "Well, he looks good doesn't he!" If you are going to try cross-country skiing start with a small country.

I know I got a lot of exercise the last few years – just getting over the hill.

We all get heavier as we get older because there's a lot more information in our heads. That's my story and I'm sticking to it.

Contributed by Lynne Shapley



REFLECTION

*There comes a time in life
When we lose a much loved husband/wife.
The shock to the system we cannot measure -
More than losing any other treasure.
Grief is bottled up inside the brain
Others try to keep us sane.
In this wonderful village I have found
So many folk like that around.
Receiving so much help and care-
Kind words offered here and there.
Have all helped to minimise
The tears that still come to the eyes.
Time's a great healer, perhaps it's not-
Could be that time we haven't got.
But whilst they cannot be relived again
Our happy memories still remain.*

Jim Goodwin

How do we cope with grief? It's a feeling that we all experience at some time or another. Jim's way of coping is the same way as he has lived during the last few years- by writing poetry to express his feelings. I find them personal, yet universal. Thank you for sharing them with us Jim. Ed

ARRIVAL OF A QUEEN

*Some years ago I lay in wait
Not quite at someone's garden gate.
I was there to meet a queen
Over fifty years since I'd last seen.
Stood outside her country seat -
That's where we had arranged to meet.
Happily the stage is set -
The scene I never will forget.*

*A limousine comes into view -
This must be the queen I knew.
I didn't have a flag to wave -
Just stood there feeling very brave.
She alights and comes toward me now.
Do I salute or do I bow?
Her beautiful smile puts me at ease
Invites a kiss. I think, 'Yes please.'
We had been good friends to tell the truth
Back in our Royal Navy youth
Situation to be faced was clear
Do we feel the same as yester year?
Into her palace she led the way
We had much to talk about that day.
It was like a dream come true
Much like an old, old story too.
As I've thought about it since
I wasn't quite the handsome prince!
In that fairy tale we're told
The blooming prince does not grow old!
Like the prince I'd travelled far
Not on white horse but in a car.
But like the story you'll understand
A marriage very quickly planned.*



*We had no time to pick and choose
At our age we'd no time to lose!
To make up for the years gone by
Was something that we had to try.
(Some said it was a foolish act)*

*We had fifteen happy years in fact
It was for both our second 'happy marriage state.'
It must be down to love and fate!*

Jim Goodwin



ALL SAINTS WINTHORPE CHURCH NOTICES

As you will have seen elsewhere in this edition of Focal Point we are having a concert by the Collingham Singers at Winthorpe Church at 7.00 p.m. on Saturday October 1st. Tickets are available from any PCC member and will cost £5 including interval refreshment. PCC members are listed below with their phone numbers:-

Ian and Christine Hasman	01636 679105
Tish Applewhite	01636 643763
Sylvia Lloyd	01636 703271
John Nelson	01636 704712
Joan Lord	01636 682304

Please do come along for this enjoyable concert which will be helping to raise money for our facilities fund.

The Ride and Stride event takes place this year on Saturday 10th September to raise money for the repair of places of worship. You can find out more details at:-

<http://www.rideandstrideuk.org/counties/nottinghamshire>

If you are feeling energetic then please do sign up and get involved. Unfortunately we do not have enough volunteers to open our church for this year's event, but the porch will be open for people to register.

Strictly speaking this is one for next month, but we thought that some advanced notice would be useful. We are having our Harvest Supper in the Community Centre on Saturday the 15th October. As usual it will be 7.00 for 7.30p.m. Please keep an eye out for posters around the village for this event. Tickets should be available soon from PCC members (please see above for details). We look forward to seeing you there.

Ian Hasman on behalf of Winthorpe Church PCC

Church Services for September

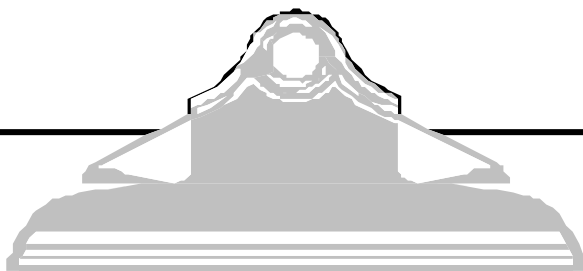


Sunday 4th	10.15 Holy Communion – Patronal Festival	Holme
Sunday 11th	10.30 Holy Communion	Winthorpe
Sunday 18th	9.00 Morning Worship	Langford
	10.15 Morning Worship	Winthorpe
Sunday 25th	18.00 Evening Prayer	Winthorpe

The Church Bells may be rung for any of the Winthorpe services. The bells may be rung on Friday evenings between 7.00 and 9.00pm for practice. If you are able to ring or would like to learn how to ring then please get in touch with the Tower Captain, Ian Hasman, on 01636 679105 or e-mail him at I.hasman@ntlworld.com.

Church Cleaners – Mrs Foden and Mrs Lloyd

Sylvia Lloyd



SEPTEMBER CALENDAR

Sunday 28th August Duck Races Lord Nelson Pub 4.00pm

Monday 5th Silver Bin and Brown Bin

Lunch Club 12.30 Community Centre

Wednesday 7th Pub Quiz Lord Nelson Pub

Thursday 8th WI Village Hall 7.30pm

Saturday 10th Community Gardening

Sunday 11th Last date for Sunflower Competition

Monday 12th Green Bin

Linedancing starts 7-8 pm CC

Tuesday 13th Mini Tennis starts 4-5 pm CC

Wednesday 14th AGM of Charity of Thomas Brewer 7.30pm VH

Thursday 15th Parish Council Meeting 7.30pm VH

Saturday 17th Collingham Show and Ploughing Match

Monday 19th Silver Bin and Brown Bin

Wednesday 21st Garden Club 7.30 pm Community Centre

Monday 26th Green Bin

Mobile Library

ANSWER TO PAT'S PUZZLE IS twenty journeys. On each journey, the squirrel had three ears – the two ears on its head and one ear of corn!

(I certainly failed on that one! Ed)

NB BIN COLLECTION IN HOLME VILLAGE ON FRIDAYS!

‘Village organisations and local bodies – if at any time you would like to get in touch with a village contact, why not try the village website.’ www.winthorpe.org.uk

