



2016

### Ed's Comments

**I came hotfoot back from holiday in time for the Winthorpe Summer Festival!** I am so glad I did because it was terrific. Congratulations to everyone involved! I have some pictures to share with you but will save them until next month's issue when I have received all the reports and the results of the exciting competitions which were run.

Part of the focus this month is on **Holme** – something which doesn't happen often enough. They don't push themselves into the limelight in Holme!

Happy 100<sup>th</sup>  
Birthday to Alf  
Cobb who  
received his  
telegram from the  
Queen in July!

He has lived in Holme  
for almost all those  
years, didn't retire until  
he was 75 and has  
always worked

outdoors. It beats our modern lifestyle. Too late for me to change now!

Look out for the postcard article by Bob Warriner which is also about Holme this month. Let's hear more from the folk in Holme!



Alf Cobb is pictured holding a card from the Queen with, left to right, his granddaughter Laura Skaith, son Lawrence Cobb, daughter Yvonne Skaith, and granddaughter Amy Skaith.

### Annie Purday

Closing date for the September issue is **Friday 19<sup>th</sup> August**

Deliver to Annie and Nick 18, Hargon Lane or email

[nickwynne@virginmedia.com](mailto:nickwynne@virginmedia.com)

## LUNCH CLUB

The **September** Lunch Club will be at 12.30 p.m. on Monday September 5th at the Community Centre.

The menu will be:



Breast of Chicken Chasseur

OR

Baked Cod Fillet with  
Parsley Sauce



with Potatoes and Seasonal Vegetables

-x-

Sherry Trifle

-x-

Tea or Coffee



£8 including a glass of wine

Contact Tish Applewhite (643763) if you need to reserve your place and give your choice of menu.

Thank you. Tish Applewhite

NB The **August** Lunch Club is on **Monday 1st August** as advertised in last month's Focal Point.

## The Lord Nelson Team

would like to thank the villagers of Winthorpe, Langford and Holme for their support to date. We've been so touched by all the messages and positive feedback we've received, and delighted to have the doors open and lights back on here at The Nelson.



Please be reassured that we are listening closely to all the feedback we've received. We have changed our Carvery to a normal Sunday lunch service, with three different roasts plus other dishes, between 12pm and 4pm every Sunday. One course £11.95, two courses £15.95 and three courses £19.95.

We were delighted to host our first "Pub Quiz & Pie" evening on Wednesday 20th July, and our inaugural "Steak Night" on Thursday 28th July, offering two steaks and a bottle of house wine for £30. Both events proved very popular and we plan to offer them on a regular basis going forwards.

We are committed to supporting our local community and are pleased to offer a "Silver Surfers" lunch every Tuesday from 11:30am to 2:30pm, offering a two-course lunch with tea/ coffee for £9.95.

We look forward to seeing you soon.

With thanks and best wishes,

**Oli, Em, Martyn & Dave**

The Lord Nelson Team

## Seasonal Flu Campaign 2016

We will be holding 2 Saturday morning flu clinics on  
**Saturday 1<sup>st</sup> October 2015, from 8.30 am – 12.30 pm**  
**Saturday 29<sup>th</sup> October 2015, from 8.30 am – 12.30 pm**

These are appointment only clinics. Appointments will be available to book from mid-August. Please contact the number below, ask at Reception or book using Systmonline if you are registered for this service.

*For Appointments telephone: 01636 893956 8.15am – 5.30pm*

**Website:** [www.collinghammedicalcentre.co.uk](http://www.collinghammedicalcentre.co.uk)

**E-Mail:** [collingham.medicalcentre@nhs.net](mailto:collingham.medicalcentre@nhs.net)



### COLLINGHAM PHARMACY



**YOUR** local pharmacy dispensing NHS, Private and Veterinary prescriptions.

Offering a wide range of medicines, vitamins, toiletries, pet medicines and seasonal gifts.

#### NHS Services Include:



**Medicine Use Review**



**Morning After Pill**



**Blood Pressure Measurement**



**Minor Ailments Scheme**

High Street, Collingham, Newark, NG23 7LB

**Tel:** 01636 893038

**email:** [collingham.pharmacy@nhs.net](mailto:collingham.pharmacy@nhs.net)

## **A SWIM ON THE WILD SIDE!**

My brother-in-law, Mike, declared that high tide was at six and so a swim would be in order. We put on our swim suits and strolled the half kilometre to the beach through the cool Devon lane. This was Monday of the short heat wave in mid-July. When we reached the beach there was only a 10 metre band of shale sand at the top of the beach. Here families were sat either on beach towels or deck chairs. Some had salads and glasses of wine, while others were eating fish and chips fetched from up the street. The edge of the water had a few adults paddling and several children playing and further out there were a few swimmers and boys playing in kayaks. Lou, my sister and Mike stripped off and challenged me to join them. It took them minutes to brave the cold water and they set off out into Combe Martin Bay. I could not get any further than knee deep: the cold was like tooth ache up through my legs. Half an hour later we rubbed ourselves down and set off home at a good pace to eat our supper which had been baking in the Aga.

Tuesday arrived: the sunshine continued and we completed our jobs as best we could in the heat. Towards mid-afternoon supper was arranged ready to go in the Aga and Mike declared that high tide was at 6.50. The same process took place and our stretch of beach was even more crowded. Again the challenge to strip! Tuesday was my first swim in the English sea for almost ten years and, my goodness, it was cold! Soon I too was swimming across the bay, not as far as Lou, but anyway it felt good. Lynne Shapley

### **MARIE CURIE TEA PARTY**

Marie Curie have sent a HUGE thank you for our fantastic donation to their fund. Thank you to all who contributed so generously by helping to run the event, by coming along and by making donations. Together we raised £380.00. It was a very successful and enjoyable afternoon. Barbara Woodcock



### **PAT'S PUZZLE**

The bridge will be blown up at midnight. It is now 22.50. You can only cross with a torch. There is only one torch and only two people can share it at any time. You are fit and it will only take you four minutes to cross the bridge. Your colleagues are slow: B takes eight minutes, C takes 30 minutes and D takes 40 minutes.

How can you get everyone safely across the bridge before midnight?

## GIANT SUNFLOWER COMPETITION

Wow, what fantastic weather we've been having! Hopefully all that sunshine has given your sunflowers a real boost. Don't forget to give them plenty of water during the warmer weather. If you're going away on holiday you will need to ask a kind neighbour or friend to water your plants when you're not there – what could you do in return to say 'thank you'?

Remember to measure your sunflowers as soon as the flower is fully formed – after flowering finishes (and the seeds start to form) the weight of the large head starts to bend the flower downwards. Measure from the soil level to the highest part of the flower. Keep a note of the height and e-mail it to us at:



[winthorpesunflower@hotmail.co.uk](mailto:winthorpesunflower@hotmail.co.uk)

The competition closes on

**Sunday 11<sup>th</sup> September**, so don't forget to e-mail us on or before that date.

Please e-mail even if you're pretty sure it's not going to be a winner, as we'd like to know how many people took part and how they got on. Photos would be great too – we usually put them up on the "big screen" when we go into school to

present prizes to our winners.

Liz & Charlie Ferreira

Two people in Hargon Lane alone have asked me to remind dog owners to be considerate. Ed





## **Winthorpe & District W.I.**

Meeting held on Thursday 14th July 2016

In the absence of the President, Virginia Seager, Viv Jackson welcomed 26 members to a summer evening in Frances' beautiful garden, decorated with bunting. Following the recent unpredictable weather, we were fortunate to have a lovely sunny and warm evening. Christine Pattinson had kindly compiled a quiz on television theme music from the 1950's to the 1970's. Prizes were awarded to the winners and the runners up, both of whom scored over 60% of correct answers.

We then indulged ourselves with delicious strawberries, cream and homemade biscuits, complete with a glass of wine.

The Raffle was drawn with an excellent assortment of prizes to be won. There was a selection of items displayed on the 'Sale Table' for members to purchase if they wished.

Viv Jackson presented Frances with a garden voucher in appreciation of her generous hospitality.

Two boards were circulated, one asking for volunteers to man the WI stalls at the Village Festival on Saturday 23rd July 2016 and the other to provide homemade cakes for the refreshments and cake stall.

There will be no meeting in August.

The next meeting will be held on Thursday 8th September 2016 in the Village Hall when the topic will be 'Both Sides of the Bench - Life as a Lawyer and Magistrate'

Hostesses will be Margaret Bark, Rose Dickinson, Betty Moran and Sue Bramley.

Sheila Palmer



# Old Text Messages (Part 4)

A continued Analogy by Bob Warriner

---

As we know, the picture postcard was the quickest cheapest way of sending messages to friends, family and others of its day, although many were collected just for the photo value and saved for the memory as was this next unwritten card.

This Friths interior view of **St Giles Church, Holme** showing its variety of carvings and stonework represents several ages going back to the 12th century.



It was last restored in its entirety in the 1930's by Nevil Truman who strived to bring it back to the former charm attained by its original benefactor John Barton who has rested there since 1491. Barton was a wool trader who made his fortune on the Calais Market and from his grave he may have witnessed the great flood in the 16th century which left his legacy and the village of Holme on the opposite bank of the Trent than before the waters rose up. In his Will he had directed that his body should be buried in his new tomb in the chapel that he had newly constructed. Arthur Mee

describes **Holme** in his 'Nottinghamshire' as a "pleasant village of orchards and farms."

The legendary Highwayman, Dick Turpin, is reputed to have frequented a cottage in Holme to rest and feed his horse Black Bess on



their London to York escapades.

Another folk legend in the village was a certain Nanny Scott who took refuge in a chamber over the church porch to escape the plague in 1666, but that's a whole story for another time.

Another Friths postcard, again of **St Giles, Holme**. The interior view depicts a building with a wealth of history beneath its red tiled roof. The church is a composition from several building ages including Norman and Tudor but the more recent restorations were carried out in 1932 by Nevil Truman.



The postal side of (E) reads: *"Dear M&G (?) I am still here in Newark. Mick has gone back home, I shall be here for weeks yet, Love to Both Bob"* Posted in 1936 to Mrs Elliott, "Oakdene", Palmers Field Rd, Banstead, Surrey.

We can only guess as to why he was stuck in Newark but possibly to do with work - a construction or other business worker? What big event was happening in the Newark area in 1936? New factory, new power station, river work, or was he simply engaged in the Holme Church restoration work which we know happened in the 1930's ???

Look out for more local postcards in later editions of Focal Point.

Bob Warriner

## **VOLUNTEER SPEED MONITORING COURSE IN WINTHORPE**

This is part of the Parish Council's initiative to cut speeding through the village by using a registered speed camera to monitor the speed of vehicles travelling through the village in order to report offenders to the local PCSO and the police force who can then take the appropriate action. The training by Chris Allen from Collingham Parish



Council will take place at 16.30 on 18th August 2016 and the group should aim to meet at the Lord Nelson for 16.00. There is space for three people on this session. Could all volunteers contact Phil Farmer 01636 658313 or alternatively 58 Gainsborough Road in order to sort out the prior administrative procedures. Phil Farmer

### **LETTER TO THE EDITOR**

It has been a few years since an accident has occurred on the main road of our village but this is no reason for the acceleration of your car as you enter it. New signage, installed recently, invites you to slow to 20 mph; this is not a challenge but a polite request. A few motorists think that after four in the afternoon there will be no children about, but of course, this is not the case as after school clubs and groups of children 'playing out' can be on the road at any time. Please consider your speed, slow down and mind that 'old dear' too.

Talking of old dears, please do not park on the pavements especially if the road is wide enough because blocking the pavement means wheel chairs and prams have to go out into the road to pass. I suppose what I'm asking is for Winthorpians to be considerate.

Name and address supplied to the Editor

## HEDGEHOGS

Here in Winthorpe we are very lucky to have a wide variety of wildlife in our gardens. Some of it is welcome and some not so welcome, like the slugs which seem to be in abundance at the moment. Among our most welcome visitors is one animal which is on the list of being endangered - the hedgehog. There is plenty of evidence that they are around Winthorpe, although they are rarely seen alive these days. I leave leftover cat food out every night and although I am never quite sure what is eating it whether it be vermin, the fox, slugs or next door but one's cat, the saucer has always been licked clean by the morning. One night, whilst putting out the milk bottles, my efforts were rewarded by the sight of Mrs (or Mr) Tiggywinkle tucking into supper.



A couple of weeks ago, whilst driving home late, a hedgehog ran across the road in front of me and I had to brake to avoid hitting it. So the purpose of this is to ask residents to please be aware that there are hedgehogs around late at night and adjust your speed accordingly.

Thank you. Pauline Lockwood

# COLLINGHAM RAMBLERS WALKS FOR AUGUST 2016

Sunday August 28th Kelham Hills 7 miles

Wednesday August 17th Edingley 4.5 miles

## **NEW WALKERS ALWAYS WELCOME**

If you would like to join us on any of these walks please contact NINA WARD on [ninajward@live.co.uk](mailto:ninajward@live.co.uk) or 01636 678419 for more information and specific walk details.

**Come along and join this friendly group!**



We provide an excellent variety of walks in Nottinghamshire and adjacent counties. Most Sunday walks are between 6 and 8 miles. Wednesday walks are usually about four miles with an optional pub lunch.

Walkers should provide snacks, drinks and packed lunches if appropriate. Suitable footwear and waterproofs are necessary.

Nina Ward

## **Account of a Ramble!**

I hadn't been walking for quite a while and the day was perfect and the walk sounded ideal; starting at Denton, a seven mile walk, part of which was along the Grantham Canal. I knew that I would be unable to complete the total seven miles, but there was an option of a shorter walk should I wish.

The day didn't start too well in that first of all I couldn't find my walking boots and then I couldn't find my sunhat. The boots I found, the sunhat I didn't. Asking my daughter if she had one I could borrow, I was told that I should have been better organised, but she couldn't find hers either and the best we could come up with was a woolly bobble hat. Not the sort of thing to be wearing on a nice summer's day, so I went without. Denton is a really pretty village and I parked under the shade of a tree in the now closed Welby Arms. A beautiful building which would make a lovely home, in keeping with the other lovely properties we passed en route.

I mentioned that the day started badly. It very nearly ended badly when a young hot head in a bright red car almost mowed us down (his fault, not ours) and we were later to find out that hot heads weren't confined to the road, some were on bikes too. But that wasn't going to stop us from enjoying the walk.

The Grantham Canal is beautiful, with an abundance of wildlife. We saw swans with their cygnets, dragonflies, and lots of fish in the clear water where the canal has been cleared. It was good to get out into the fresh air, with the sun on your face, the wind in your hair, the rustle of leaves in the trees and the birds singing.



After lunch, three of us split away from the main group and opted for the shorter walk, which took us beside the Denton Reservoir. A lone fisherman must have picked the most peaceful spot in the world overlooking the reservoir with a beautiful view with swans swimming gracefully in the distance.

By the time I got back to the car, my feet were really pleased to have a rest and I can't deny that I wasn't stiff and that my body ached, but I felt so much better in other ways and pleased that I had made the effort.

Pauline Lockwood

## Piano & Vocal Tuition

An informal and friendly way of learning Piano, Singing or Musical Theatre. Graded examinations available. 100% Pass Rate

Contact Felicity on 01636 893608 Collingham | [pianolessonscollingham@gmail.com](mailto:pianolessonscollingham@gmail.com)

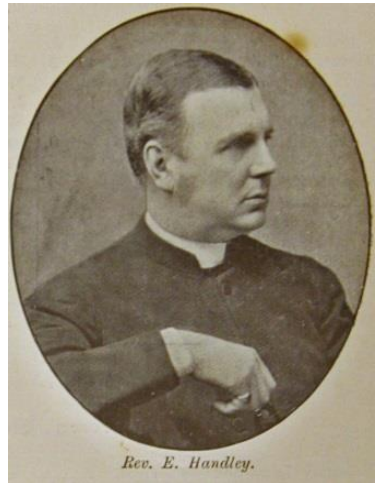
30 Years performance and teaching experience. CRB checked (Enhanced)

## Who built Winthorpe Church?

A few people have said they would like to read a copy of the talk I gave on 19th June during the service for the All Saints Patronal Festival, celebrating the 128th anniversary of the consecration of our church, so here it is.....

On 6th May 1886, a 43-year-old priest named Edward Handley was presented with the living and patronage of All Saints Winthorpe, which was at the time a run-down, largely Georgian church in which it would appear the parishioners risked their lives every time they entered as it was widely stated that the roof could fall in at any moment due to rotting timbers.

Fortunately, Revd Handley was a wealthy man and he vowed to provide a suitable place of worship for the Winthorpe villagers, which would stand as a beacon of God's glory for many years to come. To give some idea of how wealthy he

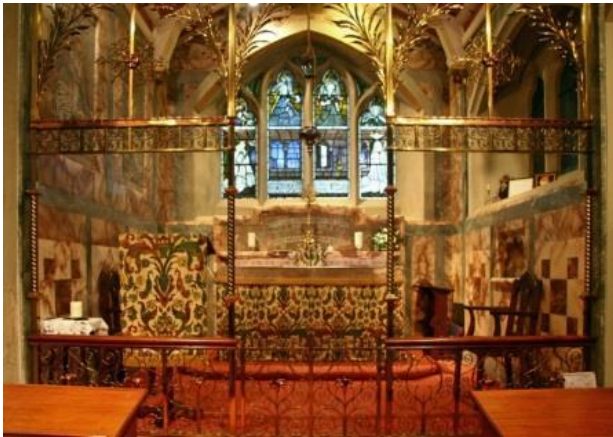


was, he actually paid for the rebuilding of the church himself, at a rumoured cost of £7000. It doesn't seem like much for a building like this, but when inflation is taken into account, in today's money that is approximately £833,000. As some of you will know, the Handley family

*Winthorpe Church in 1880* had a long association with Winthorpe – the family vault lies under the current vestry, and members of the family had been rectors and patrons of the church. Edward Handley would build the new church in memory of his 2nd cousin Philip Handley, who had died two years previously in 1884, and had been the patron of the church until his death. Now, before being made rector of Winthorpe, Edward Handley had been living



some of the time in his family seat, Muskham Grange at North Muskham, which no longer exists because it was knocked down to make way for the A1. Anyway, it might seem like a strange thing to do when you've just been made rector of a parish, but in 1886, Revd Handley decided to move out of Muskham Grange permanently and take up full-time residence in Bath, where he had been an assistant priest at St Mary's, Bathwick for many years. In effect he became what was called an absentee rector, and the day-to-day running of the parish of Winthorpe was left to his fortunately highly capable curate, Revd William C. Leeper.



The influence of Revd Handley's time at St. Mary's Bathwick on the subsequent design of our current church cannot be overstated. In 1886 a new Lady Chapel was in the process of being installed at St Mary's. It had been designed by one Sidney Gambier Parry, and having visited the church I can say that the Lady Chapel is absolutely

*The Lady Chapel at St Mary's Bathwick* stunning. The walls are covered in marble, in intricate designs and the screen is wrought from what looks like metal covered in gold leaf. It is incredibly impressive, and Edward Handley must have thought so too because of course he appointed Sidney Gambier Parry to be the architect for this church in Winthorpe. Many more craftsmen who had most likely worked on the church in Bathwick, such as stonemasons, blacksmiths, etc. were also engaged to work on our church too.

It didn't take long for the demolition and rebuilding work to commence. In just under six months since Revd Handley had become the rector of Winthorpe, a temporary iron church (affectionately known as a tin tabernacle) had been erected in the churchyard, the old church had been demolished, and on All Saints Day 1886, the foundation stone was laid by Sir Henry Bromley, baronet of East Stoke Hall.

After only 18 months or so, the building of the church was complete. The date of the consecration service was to be 7th June 1888, but sadly the Bishop of the newly created Diocese of Southwell, George Ridding, was too ill to attend. The service was rescheduled for 19th June in the hope that the bishop would have recovered sufficiently, but it was not to be, and the Bishop of Lincoln,



Edward King, was fortunately able to step in instead. The Bishop of Southwell did actually recover and went on to live for another 16 years, so although obviously incapacitating, whatever ailed him was not immediately terminal. So, on 19th June the village of Winthorpe was about to celebrate its most joyous event in some years, and most likely for some years more to come, since the world had been in the grip of a “Great Depression”, which began 15 years previously and would continue for 8 years more. Incidentally, just four days previously, the country and indeed most of Europe had been shocked by the death of Kaiser Frederick III of Germany, on 15th June. He was married to Queen Victoria’s eldest daughter, Princess Victoria, and there was a great deal of national sympathy for the royal family at this time.

Back to 19th June, and despite the preparations for the consecration service, church life had been going on as normal, and there had been an early Eucharist held in the iron church, presumably for the benefit not only of the people who would be attending the special service, but also for those who would not be able to get in because it was for ticket holders only.

At 10.30am the churchwardens, Mr Ringrose and Mr Johnson, carrying their new staves of office, opened the doors to the new church and began letting in the congregation, who rapidly filled the church long before the service was due to start at 11am. While they were waiting, Mr H.J. Davis of Christ Church, Bath, and previously of St Mary’s Bathwick “extemporised some pleasing music on the organ”. At 11 o’clock the procession began at the church door headed by the church wardens, and then followed the cross-bearer (from St Mary’s Bathwick), the choir (again, augmented by choristers from St Mary’s Bathwick), 28 members of the clergy from Nottinghamshire and Lincolnshire, the Rector Edward Handley, the Curate in Charge, William C. Leeper, the Archdeacon of Nottingham, the Bishop’s Chaplain, and the Bishop of Lincoln. The hymn “All people that on earth do dwell” was sung while the procession passed up the nave, and the bishop sat on a temporary throne on the north side of the altar – it could well have been the chair we see there today.

How many people can be fitted into this church? Apparently there were 320! The first part of the service was the Consecration, during which the Bishop went in procession around the church saying a prayer at the font, on the chancel steps, in the body of the church, at the lectern, the pulpit and finally at the altar. The sentence of Consecration was read by the Registrar of the Diocese, dressed in wig and gown, as they still do nowadays for this sort of occasion, and then it was handed to the Bishop to sign. Immediately following the Consecration, Holy Communion was celebrated by the Bishop who also preached the sermon based on the first book of Chronicles chapter 29, verse 1 “The work is great, for the palace is not for man, but for the Lord God”. The choir sang beautifully at appropriate times during the service, and the Eucharistic musical settings were by Richard Redhead.

The hymns included all four of the ones we are singing today. At the end of the service, as the congregation left, the organist played the Hallelujah Chorus by Mr George Frederick Handel which I will try to recreate!

At two o'clock, a luncheon was provided under a large tent, with Mr Joseph Gilstrap Branston J.P., occupying the chair. The Branstons lived at Winthorpe Grange which no longer exists, but used to be where The Spinney estate is now. There were many notable local people present, and there were 15 toasts proposed along with accompanying speeches; it must have gone on for ever, but when the speeches had finished, the celebrations were concluded.

As a footnote, although largely absent and living in Bath, Revd Edward Handley continued as Rector of Winthorpe until 1895, when he resigned and presented the benefice to the Revd Clement William Hazlewood Griffith, previously the senior curate at St Mary's Bathwick. Revd Handley lived for another 9 years, and I'd just like to finish with this "In Memoriam" notice from the Winthorpe Parochial Magazine, written by Revd Griffith and published in February 1904:

"At 4 a.m., before the daybreak of Monday, February 1st, at 19, Royal Crescent, Bath, the soul of Edward Handley, Priest, passed away from this world. Once a familiar form in this district, of late years he has been seen but little. So new comers know not of him and of Winthorpe's debt to him. The older ones know. They remember his genial kindness, his liberality and sympathy in their need, his manifest faith and love of God, they remember his costly offering to God for them of the rebuilding of the parish church of Winthorpe in 1887. As week by week we worship there, we have good reason to remember him and thank God for him. And now he has passed to the realities of which in this life he was in faith so sure. And we as yet are left. He said himself that he rebuilt the church because, as patron of the benefice, he wanted it to be a centre of Church life in the neighbourhood, for the glory of God and the utmost good of man. We have striven that it may be so. In memory of him, his such desire, his generosity, his firm faith which he would have had all share, let us strive that it may be more so. That would form the memorial which he would love best."

**Article written by Christine Hasman,  
member of Winthorpe PCC**

*For more information on the history of our beautiful church see the village website ([www.winthorpe.org.uk](http://www.winthorpe.org.uk)) and the Southwell & Nottingham Church History Project website ([southwellchurches.history.nottingham.ac.uk/winthorpe](http://southwellchurches.history.nottingham.ac.uk/winthorpe))*



# **COLLINGHAM SHOW & PLOUGHING MATCH 2016**



**Saturday 17th September - Begins 9am**

**Larksfield, Newark Road, Collingham, NG23 7RD**

By kind permission of Mr and Mrs C T Sheldon

**FUN FOR ALL THE FAMILY** with a Companion dog show, bouncy castles, face painting, livestock, vintage vehicles, horticulture, ploughing, archery, traditional games, plashing, tug of war, ridden horse and pony classes, trade stands, Falconry display, Tally Ho marching band,



refreshments, raffle, Collingham Fire Service demonstration, rural arts and crafts and weather permitting:

## **Battle of Britain Memorial Flight Fly Over**

**CHILDREN U13 FREE\*** (\*if accompanied by an adult)

Entrance prices: £6 adults, £5 Seniors, 13-17yrs £4.

**FREE CAR PARKING**

For further information visit

**[www.collinghamshow.com](http://www.collinghamshow.com)**

# Winthorpe Tennis Club



## Looking for a new Chairman

Colin Smith has now been Chairman of the Club for 22 years. He is keen to step down. If anyone is interested in taking on the role please let him know (01636 701205).

## Committee Members 2016

*Chairman* - Colin Smith 01636 701205

*Secretary* - Maureen Smith 01636 701205

*Vice Chairman/Membership Secretary* - Sue Sharp 01636 703198

*Treasurer* - Chris Hickman

## Membership Fees 2016

Family membership £40.00

Adult membership £20.00

Junior (11-18 years) £5.00

Student £5.00

£5 for own key

**Members - play for FREE as many times as they wish**

**Non-Members - Pay and Play per hour**

£2.00 per adult

£1.00 per junior (under 11 years not to play without an adult)

£5.00 refundable key\* deposit

\*Keys available from Sue Sharp and Maureen Smith

**Maureen Smith – 01636 701205 (Secretary Winthorpe Tennis Club)**

## THE COMMUNITY CENTRE ADVANCE NOTICE

The next concert will be on  
Sunday 23rd October at 7.30 p.m.  
We are very lucky to have booked  
The Remi Harris Project.

Remi Harris is a very talented  
guitarist who with his  
co-musicians plays a mix of  
gypsy /jazz/blues music.  
There should be something for all  
tastes so please put the date in

your diary. **Frances Kelly (Chairman)**



## **CHARITY OF THOMAS BREWER 400<sup>TH</sup> ANNIVERSARY**

In 1616 the Charity was established through the will of Thomas Brewer, a yeoman resident in Winthorpe. This year we are celebrating the 400<sup>th</sup> Anniversary and taking the opportunity to make the Charity more relevant to today's situation.

The original object of the Charity was to give help to residents in conditions of need, hardship or distress either financially or in kind. The welfare state now looks after such situations and the Trustees of the Charity have found it difficult to meet this object.

After considerable negotiation with the Charity Commission the Trustees have now received approval to extend the object to include support for charitable efforts by organizations or individuals to promote the benefit of residents in Winthorpe, Langford and Holme. The original object is retained in case the need should arise.

The Charity receives its income from the rental of land in the village belonging to the Charity and from investments. The money available for distribution is not large but the extended object will make a greater choice of benefit possible.

The administration of the Charity has also been considerably updated to include the following points that have not previously existed:

- Three elected Trustees in addition to two already nominated by the Parish Council.
- An Annual General Meeting open to all residents at which the Accounts are presented.
- The appointment of Chairman, Treasurer and Secretary by the Trustees following the AGM.

The Rector of Winthorpe will remain an ex-officio Trustee or, in the absence of a Rector, the nominee of The Bishop of Southwell and Nottingham. Tish Applewhite is currently that nominee.

The first AGM will be held at 7.30pm on Wednesday 14th September in the Village Hall. Everyone is very welcome to attend. Nominations for Trustees should be made before 23rd August. Please come and we will be very happy to answer any questions you may have.

**Peter Foden, Trustee**

# WINTHORPE WITH LANGFORD PARISH COUNCIL

On Thursday 21st July 2016, the Parish Council held its quarterly finance meeting followed by the monthly Parish Council meeting in the village hall.



The finance committee reported that the accounts for 2015/16 have been sent to the external auditor, Grant Thornton UK LLP, and details of how to view these have been placed on the village notice boards.

The Council can confirm that training for using the Speed Camera in the village has been arranged for the 18th August 2016 at the Lord Nelson at 4 p.m. This is open to anyone interested in using the camera.

The Council has received numerous complains, from persons within and outside of the village on the condition of trees and hedges particularly along Gainsborough Road. Can I remind residents that it is your responsibility to ensure that trees and hedges on your property do not affect passing pedestrians and motorists and please try to keep them in good order.

The Council discussed the proposed housing survey by Midlands Rural Housing. After taking advice from N.S.D.C. it was decided to take further advice from the Local Authority to fully understand the implications this may have on the village and not to commit to the survey in the near future.

The Council is also looking into the Skateboard Park, as it needs some work to it, to see if the area can be put to better use that will benefit the whole of the village. I will keep you updated on that.

Finally, there is no Council meeting in August so I wish you a pleasant summer break and will communicate again in the September edition of Focal Point. Should you need to contact the Council, details are available on the village website.

**Mrs Sally Sillery – Parish Clerk**



# **ALL SAINTS WINTHORPE CHURCH NOTICES**

As promised here is a quick report on the Dedication Festival in June. Christine's talk about the Dedication service held on the 19th of June 1888 was very well received. Several members of the congregation suggested that she might submit it to Focal Point as an article. She has re written it in a more suitable format and submitted it to the editor – so there isn't much point in me summarising it here as you can read it for yourself.

You will notice that our regular 3rd Sunday morning service has been cancelled. This is to encourage as many people as possible to go to the Patronal Festival at Langford. All other services throughout the entire group have been cancelled for the same reason, see you all there.

Sylvia and Joan were inundated with gifts for the Tombola stall at the Village Festival in July. In fact they received so many that they needed two tables, rather than the usual one, to display them all. Thank you all for your generosity.

Ian Hasman on behalf of Winthorpe Church PCC



## Church Services for August

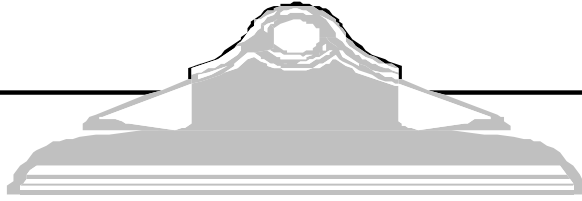


Sunday 7th	9.00	Holy Communion	Holme
Sunday 14th	10.30	Holy Communion	Winthorpe
Sunday 21st	10.30	Holy Communion – Patronal Festival with Holy Baptism	Langford
	10.15	CANCELLED	Winthorpe
Sunday 28th	10.15	Morning Worship	Holme

The Church Bells may be rung for any of the Winthorpe services. The bells may be rung on Friday evenings between 7.00 and 9.00pm for practice. If you are able to ring or would like to learn how to ring then please get in touch with the Tower Captain, Ian Hasman, on 01636 679105 or e-mail him at [i.hasman@ntlworld.com](mailto:i.hasman@ntlworld.com).

**Church Cleaners** – Miss Applewhite

**Brass Cleaners** – Mrs Cobb and Mrs Lloyd      Sylvia Lloyd



## AUGUST CALENDAR

Monday 1st	Green Bin Lunch Club 12.30 Community Centre Mobile Library
Monday 8th	Silver Bin and Brown Bin
Monday 15th	Green Bin Birthday of The Princes Royal 🇬🇧
Thursday 18th	Speed Monitoring Course 4pm Lord Nelson
Monday 22nd	Silver Bin and Brown Bin
Monday 29th	Green Bin

## REGISTERING TO USE RECYCLING CENTRES

Nottinghamshire residents who wish to use one of the county's recycling centres (including Newark) will now need to register with Nottinghamshire County Council. This will ensure only Nottinghamshire residents can use the centres. Registration is free – register on line at [www.nottinghamshire.gov.uk](http://www.nottinghamshire.gov.uk) or call 0300 500 80 80.

**Vehicle checks will begin in September.**

**ANSWER TO PAT'S PUZZLE IS** Take B and send B back with the torch. Call for C and D, then take the torch back yourself to collect B with two minutes spare.

## NB BIN COLLECTION IN HOLME VILLAGE ON FRIDAYS!

‘Village organisations and local bodies – if at any time you would like to get in touch with a village contact, why not try the village website.’ [www.winthorpe.org.uk](http://www.winthorpe.org.uk)

