



2016

**Ed's Comments**

**What a full and busy issue of Focal Point this is!**

That is because there is so much happening in our community over the next few weeks. Firstly there are all the school end of term events including their 'Summer Sizzler' on 1st July.

Then there is the exciting re-opening of The Lord Nelson Pub in Winthorpe on 2nd July. I shall be going along to meet the new landlords and to take some photos of the event. Hopefully I shall take a prize-winning photo to enter in the Photographic Challenge at the Winthorpe Summer Festival on 23rd July at the Community Centre!



This year's Festival looks particularly good fun with not just all the usual stalls and displays but a new Scarecrow Making Competition. Look inside this issue of

Focal Point for all the details of what is going on and give your support to the events which people have worked so hard to make a success!



I look forward to seeing you all there!

**Annie Purday**

Closing date for the August issue is **Friday 22nd July**

Deliver to Annie and Nick 18, Hargon Lane or email

[nickwynne@virginmedia.com](mailto:nickwynne@virginmedia.com)

## LUNCH CLUB

The **August** Lunch Club will be at 12.30 p.m. on Monday August 1st at the Community Centre.

The menu will be:



Sausage and Mash with Onion Gravy

OR

Tuna and Pasta Bake



with Seasonal Vegetables

-X-

Raspberry Roulade and Ice Cream

-X-



Tea or Coffee

£8 including a glass of wine

Contact Tish Applewhite (643763) if you need to reserve your place and give your choice of menu.

Thank you. **Tish Applewhite**

NB The **July** Lunch Club is on **Monday 4th July** as advertised in last month's Focal Point.

# LORD NELSON GRAND RE-OPENING!



We're delighted to let you know that The Lord Nelson pub will be re-opening on 2nd July, under a new four-strong team. We all have a long history with the pub and we're proud to be bringing it back to life. We're currently hard at work painting, strimming and power-hosing ahead of our launch so you'll be seeing us around the village.

To celebrate, we'd like to invite all families of Winthorpe, Holme and Langford villages to join us for a Summer BBQ Party on Saturday 2nd July from 12pm – 3pm. There'll be free food, a bouncy castle and face painting.

Our head chef Dave will be serving lunch and dinner Tuesday to Sunday, with the pub open from 11am to 11pm (we're closed on Mondays.) We'll be offering a carvery lunch on Sunday 3rd July and full service from Tuesday 5th July.

We're looking forward to meeting you and are proud to be a part of Winthorpe village.

Website under construction and coming soon!

With best wishes, Emilie, Dave, Martyn & Oli



# **WINTHORPE SUMMER FESTIVAL 2016**

**Including Family Bike Ride (a.m.)**

**SATURDAY JULY 23<sup>TH</sup> 1PM - 5PM**

**WINTHORPE COMMUNITY CENTRE**

**Featuring**



Displays by Newark Firecrackers Cheerleading Squad -

Craft Fair - Classic Car Display - 'Bounceabout' Inflatables

- Line Dancing display - Live Music - Children's

Races - Tennis Tournament - Tug-o-War

Competition - Tombola - Stalls -

Family Games - Raffle



**BBQ - Cakes - Teas - Bar**

**Monies raised will go to Beaumont House and the Winthorpe**

**Defibrillator Fund**

**PLEASE COME ALONG TO SUPPORT YOUR VILLAGE AND THESE WORTHY**

**CAUSES**

**Disabled parking only at the Community centre**

**Please follow the signs for alternative car parking**



# Winthorpe Festival Scarecrow Competition 2016



This year as part of the Festival, we are introducing an annual Scarecrow Competition. This has proved to be successful in other villages, so we thought we would give it a try! The theme for this year is **'Superheroes!'**

Entry will be open to children and their families but only 1 per household at a cost of £2. The forms plus remittance must be in by Wednesday July 13<sup>th</sup> to the two addresses below.

Application forms will be sent home with children at Winthorpe Primary School and from the beginning of July they will also be available at The Lord Nelson; the bus shelter at the pub; from Sue Masheder at 7 Gainsborough Road and Tish Applewhite at 76 Gainsborough Road.

Villagers will need to display their scarecrow in their front garden the week beginning 18<sup>th</sup> July. Judging will then take place, with the winner announced at the Summer Festival on Saturday 23<sup>rd</sup> July.



# Winthorpe Village Photographic Challenge

**Up for a challenge?** Take a good photo?

## **Challenge 1** ‘Winthorpe Village Life’

We’re looking for the best photo showing life in our village. Make of it what you will – just bring us your pics.

## **Challenge 2** ‘Funniest Selfie’

(For the less serious out there just having fun with your mobile)



## **Rules?**

- Hard copy paper print only (any paper – you choose)
- No bigger than A4

## **How to enter?**

Entries will be accepted on the morning of the Winthorpe Village Festival (July 23rd) at the Community Centre.

Each entry will be charged 50p. All monies raised will be donated to the Festival funds.

There’s a £5 gift voucher for the winner of each category!

## **Who Judges?**

The public will. All entries will be displayed at the Festival and visitors will be invited to choose their favourite. The pictures that get the most votes will win – simple as that. So get snapping.

## **For more information contact:**

Les Murray 01636 678914 ([les\\_murray@hotmail.co.uk](mailto:les_murray@hotmail.co.uk))

Amanda Ramsay 07791 048628 ([Amanda.ramsay@live.com](mailto:Amanda.ramsay@live.com))

## **PAT'S PUZZLE**

Susan said, "The day before yesterday I was 52, but next year I'll be 55."

Can you deduce the date of Susan's birthday, as well as the date on which the statement was made? (Answer under the July calendar)

# WINTHORPE SUMMER FESTIVAL

SATURDAY 23<sup>rd</sup> JULY



## CRAFT FAIR & ART EXHIBITION



There will be a Craft Fair and Art Exhibition in the Community Centre on the afternoon of the Festival – proceeds going to the Festival's chosen charities.

If you would like a craft fair table the cost is £10; all income above that being retained by the stall holder. Jean will be having a craft table if you would like to contribute any homemade items and donate 10% of the income to the funds.

Original paintings, prints and cards/notelets will be very welcome for the Art Exhibition – again with a 10% sale value to the funds.

If you would like to display something, **whether for sale or not**, please let me know and bring your items to the Community Centre on the morning of Saturday 23<sup>rd</sup> July. Tell me if you need help with transport.

Peter Foden 704241

## A CONCERT TO REMEMBER!



‘1685’ performing at All Saints’ Church, Winthorpe on Friday 10th June 2016  
(Photo by Pat Finn)

From left to right:  
Christine Hasman - Recorder,  
Wendy Leonard - Soprano,  
Jane Stubbs - Harpsichord,  
Helen Mason - Recorder

As an aspiring but very amateur recorder player I found the concert by ‘1685’ most enjoyable and totally inspiring. The programme of music was varied and beautifully performed. What a lovely way to celebrate the 90th birthday of our own ‘Eliza the Fairest.....’ (Ed)

### **The end of an era, so let’s bow out with a party!**

As I am sure you will be aware, the house belonging to my late Father-in-Law Steven Jackson has been on the market. An offer has been accepted on the house and I will shortly be putting my house on the market too and, when it is sold, leaving the village. We thought it would be a good idea to

have a ‘Farewell to the Garden’ party so please do come along to have a look around the garden, join us for a drink and say goodbye on Sunday 24th July between 6pm and 8pm. The wooden gates at the bottom of the hill will be open so just come in, everyone is welcome. **Sue Jackson and family**







High Street  
Collingham  
Newark NG23 7LB  
General Enquiries/Emergencies:  
01636 892156  
Email: [collingham.medicalcentre@nhs.net](mailto:collingham.medicalcentre@nhs.net)

## **Drs Terrill, Fearn, Li & Walker**

**Monday 8.00am-7.15pm**  
**Tuesday - Friday 8.00am-6.30pm**

**For Appointments telephone: 01636 893956 8.15am – 5.30pm**  
**For Prescriptions telephone: 01636 892210 8.30am – 12.00pm**

*In addition to our normal medical services, we can offer:*

*Child and Adult Immunisations, Well Person Health Checks, Travel Advice, Minor Injuries, Joint Injections and Minor Ops (including cryotherapy)*

Our communication with patients relies on current information. If your personal details change, including telephone numbers, please let the practice know.  
Thank you.

Out of Hours Service is provided from 111 when the surgery is closed.  
Website: [www.collinghammedicalcentre.co.uk](http://www.collinghammedicalcentre.co.uk)



## **COLLINGHAM PHARMACY**



**YOUR** local pharmacy dispensing NHS, Private and Veterinary prescriptions.

Offering a wide range of medicines, vitamins, toiletries, pet medicines and seasonal gifts.

### **NHS Services Include:**



**Medicine Use Review**



**Morning After Pill**



**Blood Pressure Measurement**



**Minor Ailments Scheme**

High Street, Collingham, Newark, NG23 7LB

**Tel:** 01636 893038

**email:** [collingham.pharmacy@nhs.net](mailto:collingham.pharmacy@nhs.net)



*"Learning Together, Growing Together"*  
Head Teacher: Miss Caron Ementon BA (Hons) PGCE  
Thoroughfare Lane, Winthorpe, Newark,  
Nottinghamshire, NG24 2NN  
Telephone/Fax: 01636 680060  
school.office@winthorpe.notts.sch.uk  
[www.winthorpe.notts.sch.uk](http://www.winthorpe.notts.sch.uk)

Hello Everyone,

16th June 2016

I thought I would start with the sad and rather unpleasant news before moving on to the news I would really like to tell you. Unfortunately, at the end of the half term holidays school was broken into, damaged caused and our office safe stolen with money inside including the pocket money of Class 4 children who were due to depart on their residential trip the following morning. The incident was reported to the police, but this sadly this is the second break in here in two years. There isn't much I can add at this point as enquiries are on-going. However, I would like to publically thank our immediate neighbours who do keep an eye out the premises when closed, and I am grateful to them for doing this.

On a more cheerful note, Class 4 had a fantastic trip away on the North Yorkshire Coast. They left on the Monday am all dressed up as 'evacuees' and headed straight for Rydale Folk Museum. The week included a visit to Robin Hood's Bay, a local coastguard station, Dalby Forest, Brompton Cliffs, some orienteering, exploring Whitby, a trip on a steam train, time on the beach, rock pooling, and a talent contest! Children and staff had a great time – although they were all a little tired on their return!

Class 3 are enjoying their 'Theatre in a Day' experience as I write, and parents are popping into school to watch their performance later this afternoon – I'm sure you'll agree it's quite an achievement to pull a play together in just one day.

We welcomed Mrs Maureen Dobson into school to meet the children and have lunch with us on Wednesday 14th June. She was instrumental in getting the street light fixed just outside the school gate. We are extremely grateful to her for this as Thoroughfare Lane is very dark in the winter months and it was easy to stumble on the pathways. We hope she enjoyed her time with us.

At the end of June we hold our 'Transition Days' and we're looking forward to welcoming the next intake into our Reception Class. We write a letter directly to each child who will be joining us in September (which I understand causes great excitement in itself) asking them to come into school to have some fun and to get to know us. It is an exciting few days when all the children move around the school and take the opportunity to 'experience life' in the next year group. You may be interested to know that this year we still have one space available in our Reception Class, so if you know of anyone interested please ask them to contact us on 01636 680060 as they are welcome to come and look around. We also have a limited number of places available in other years. The rest of the term is looking busy as usual. We have the 'Bounce About' Event to come, Parent Evenings, Sport's Day, Class trips to Sundown Adventure Land and Xscape, our Junior Production which this year is "Will Rocks" – a musical based on William Shakespeare and of course our Summer Fete – the Summer Sizzler.

The Sizzler is on Friday 1st July 6pm to 8pm. The PTA gives our older children £5 each to use to organise and run their own stalls at the event. They come up with great ideas and raised £400 last summer! There will also be a bouncy castle, games, toys and clothes stalls, and we'll be joined by the Red Cross, Arty Pots and Radio Newark. There will be a BBQ to enjoy, plenty of refreshments and of course the raffle – which has some great prizes this time round. The door opens at 6pm and it is £1 to enter for adults and children are free. Please come and enjoy the evening with us. The children will be singing and it is a lovely atmosphere – and of course, a worthy cause.

Finally I would like to remind you about the 'picnic' we'll be holding here on the last day of term which is Friday 22nd July – open to all. Bring a picnic with you if you like, or just pop up for short time and see us. You'd be very welcome.

As you'll be aware, this will be my last contribution to Focal Point before I leave and so I would like to say 'thank you' again to you all for your support for myself and the school, and to wish you all the very best for the future.

Best Wishes

**Caron Ementon (Headteacher)**

*Winthorpe Primary School*



# SUMMER *Sizzler*

*Friday  
1st July -  
6pm-8pm*



£1 entry at the gate for adults - Children go FREE  
Fun for all - family and friends - all welcome!

**Performances by the children | A summer fair with stalls,  
including those run by our older Year 5 & 6 children |  
Bouncy Castle | Music | Games for all | BBQ | Licensed Bar  
...and Radio Newark**



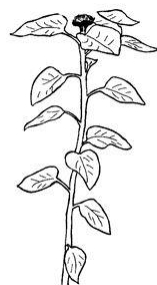
**Please support your local school and its children**

Contact Winthorpe Primary School on 01636 680060  
or email [school.office@winthorpe.notts.sch.uk](mailto:school.office@winthorpe.notts.sch.uk)

# GIANT SUNFLOWER COMPETITION

It is now over three months since our junior gardeners planted their sunflower seeds – how are your plants coming along? They should be outside now, with canes to support them as they grow.

As we hopefully head into some warmer weather, make



sure that you are keeping your plants well watered. Keep thinking about the winner's trophy you could be bringing home in September!

If you're lucky enough to be going away during the summer holidays, now is the time to think about friends or neighbours who can look after your plants for you. What 'good turn' could you do for them to say "thank you"?

Here's a photo of Alex with his tallest sunflower – he was delighted to discover that it is now taller than him!



If you get chance to snap a few photos of your plants (and your children, if they'd like to appear on these pages!) you can e-mail them to: **[winthorpesunflower@hotmail.co.uk](mailto:winthorpesunflower@hotmail.co.uk)**  
Good Luck!

Liz & Charlie Ferreira



giving  
nature  
a home

## News from Langford Lowfields June 2016

It feels like we have finally had a bit of summer here at Langford in the last couple of weeks and the warm weather has certainly brought out the insects and wildflowers. There are several species of butterflies now on the wing, including the migrant species Painted Lady. Painted Ladies travel all the way from southern Europe and Africa to reach our shores and in some years are present in their millions. Other butterfly species around at the moment include orange-tip, brimstone, speckled wood and common blue.

Dragonflies too are a real feature of summer and we have had some very welcome records recently of our rarest species, the hairy dragonfly. This used to be a southern species, but has been expanding north in recent years.

After its discovery here in 2014, it wasn't seen at all last year, so their rediscovery is a relief. We saw a pair mating too, so can even confirm breeding! Look out also for black-tailed skimmers, four-spot chasers and the stunning red-eyed damselfly.



The breeding season is in full swing and the site is full of young birds. Cygnets, coot young, ducklings and great crested grebe chicks are among the most obvious, but keep an eye open too for smaller birds with young, such as spotted juvenile robins, or family parties of long-tailed tits.

Out on site, we have been busy sowing reed seed, which should be ready for planting in a couple of months' time, sprucing up our visitor trails and facilities for the summer season and doing some well needed fencing repairs.

We are currently looking for volunteers to join our Beach Hut team, if you have a few hours to spare each week, enjoy meeting people and helping others to engage with nature and can offer a professional but friendly welcome to visitors please get in touch. For further information about how you can join our volunteer team or for regular updates on our work here at Langford Lowfields, have a look at our website at [www.rspb.org.uk/langfordlowfields](http://www.rspb.org.uk/langfordlowfields) or call our office on 01636 893611.



## Could you be a Home-Visiting Volunteer?



Could you spare a couple of hours each week to make a huge difference in the life of a local family?

We train local parents/grandparents to provide befriending and support to families when they need it the most.

This is a good opportunity for retired people to utilise their valuable life experience to make a real difference in families' lives. It can also be a great way for parents to gain useful skills/experience for the return to work, or for a change in career direction or for any parent or grandparent who is looking for a meaningful volunteering opportunity. Here's what some of our volunteers and families have to say:

*"I can't begin to tell you what this organisation has done for me and my children. I don't even know where to start. I just know I wouldn't be the person I am today if I hadn't had Home-Start in my life."*

A Home-Start Family

*"Every parent has the skills to be a volunteer, they just don't know it; the training gives them the confidence."*

A Home-Start Volunteer

We're recruiting now for our next Volunteer Preparation Course which starts in September. Full, free training and support is provided. We'd love to hear from you if you have parenting experience, a non-judgemental attitude and good listening skills.



Please contact our friendly team to find out more:

Home-Start Newark, 30 Barnbygate, Newark, NG24 1PZ

Tel: 01636 705011

Website: [homestartnewark.co.uk](http://homestartnewark.co.uk)

Email: [info@homestartnewark.co.uk](mailto:info@homestartnewark.co.uk)

# Old Text Messages (Part 3)

A continued Analogy by Bob Warriner

---

## Downline speed vs. Download Speed

From the 1850's to the 1950's Steam driven locomotives were the kings of speed and the public knew of nothing better until the transition to diesel and electric. The motorcar was also finding its way into everyone's household; roads were improving and motorways being constructed, along with air travel becoming rapidly more affordable.

In the mid 1880's the Royal Mail was continually trying to improve and expand its services (opposite to today?) One idea was to create travelling post offices (TPO's) on the mainline railway routes. This meant that mail in transit could be sorted and made ready for distribution at their various destinations, Kings Cross to Edinburgh say. Not only that, they devised methods of picking up and dropping off mail bags en-route without stopping, making things even quicker and to the masses this was a super service and the fastest available. The mail trains did have their problems though, notably in 1963 with the Great Train Robbery when the service was carrying large amounts of currency.

Eventually time caught up with the TPO's with centralised automated sorting offices, faster roads and the advent of their great arch enemy 'electronic mail'. The last of these TPO coaches ran in 2004.

The Picture Postcard's popularity fitted well into the latter half of the steam era, the vintage ones being mostly between 1900 to the 1950's. Although they are still widely sold today the main purpose has changed from being a holiday maker's message media to being a souvenir picture of a nice view or something amusing.

Going back to the topic of rail speed being a large factor in the delivery time of posted mail, it seems ironic that **Virgin**, now a major operator on the rail network is also a leading internet provider, promising the best of rail experience as well as the fastest super fibre optic broadband service.

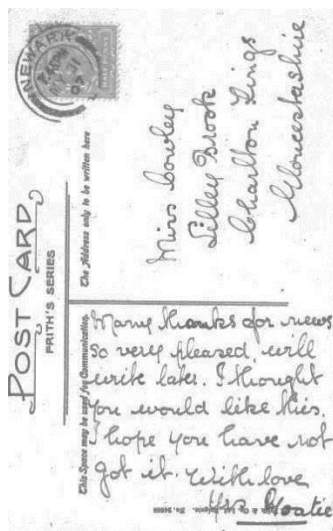
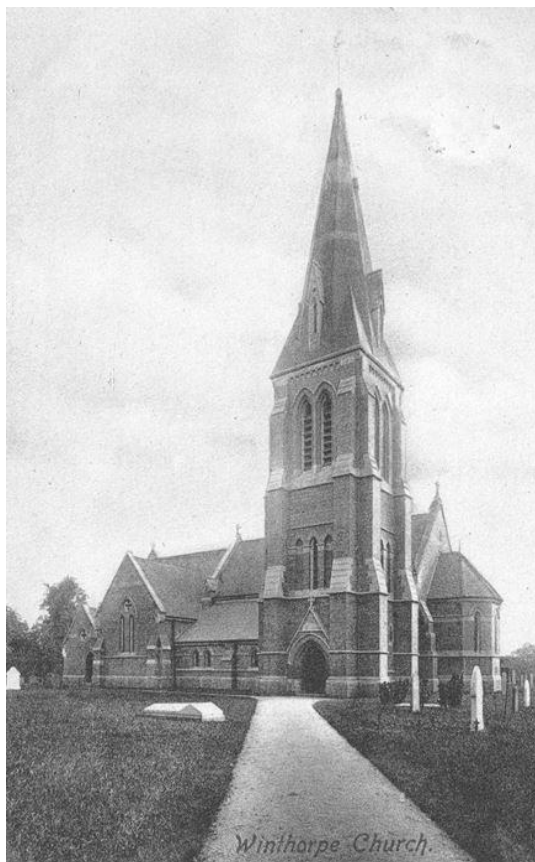
The equivalent to these amazing cable and airborne systems back in the first part of the 20<sup>th</sup> century was the simple road and rail networks progressing from the horse drawn carriage to petrol powered vehicles and the express steam trains feeding busy Royal Mail sorting offices for the "postie" to deliver.



This Frith's 1907 posted card has a good full view of **All Saints** in its entirety.

Sent to a Miss Cowley, Lilley Brook, Charlton Kings, Gloucestershire it reads:

*"Many thanks for news so very pleased will write later. I thought you would like this. I hope you have not got it. With love, Mrs Goatie"*



This message indicates as in previous ones that recipients were often collectors as well; this is born out to be very true because so many postcards have survived from that period. Most have been handed down a few generations as family

treasures eventually cropping up in auction rooms, many still saved in their original "inbox" albums.

The auction lots mostly end up in the hands of dealers (often collectors themselves) who then sell them on at collector's fairs to a home and international market. They can also be found on eBay auction sales.

*More to come in later Focal Point issues, Bob Warriner*

## WINTHORPE GARDEN CLUB

On Wednesday 1st June 44 Winthorpe Garden Club members and friends set off for a two-day visit to the Dorothy Clive Garden near Market Drayton in Staffordshire and the Bodnant Garden in North Wales.

The 12 acre hillside Dorothy Clive Garden was created in 1939 by Colonel Harry Clive in memory of his wife. It was full of a wide range of unusual plants and trees. The landscape features included a woodland garden with a waterfall, an alpine scree, a damp garden, a gravel garden and borders with rhododendrons and azaleas in full bloom. This was a fabulous garden made better with glorious sunshine. New to the garden is the Royal Botanic Glasshouse, a state of the art glasshouse.

Leaving the garden we travelled to the Best Western Waterloo Hotel in Betws-y-Coed in North Wales for an overnight stay. Leaving Betws-y-Coed the following morning we travelled a short distance to the Bodnant Garden.



The Garden has two parts. The upper garden around Bodnant Hall consists of the terraced gardens and informal lawns shaded by trees. The lower portion is known as the “Dell” a gorge garden with a waterfall. There was a wide range of interesting and beautiful plants and trees collected from all over the world; in particular from

*The Laburnum Arch at Bodnant Garden, Wales*

China, Japan, North America and Europe and they all seemed to suit the Welsh climate. Both gardens had a breathtaking Laburnum arch in full flower. On our way home we stopped for an evening meal.

A special thanks to our Outings Secretary, Mrs. Julie Parker, for an enjoyable two-day break. Julie obviously had the prayer mat out as the weather was dry and sunny whilst back home it was cold and miserable.

The club is visiting the Sandringham Flower Show on the 27th July. The coach leaves the Lord Nelson at 9am.

Volunteers are required to help in manning the Garden Club Skittles Stall at the Village Festival on Saturday 23rd July. Pat Finn

## COMMUNITY GARDENING DAY

### Request for help!

We are working towards improving the bank area to the left hand side of Jubilee Walk down to the Fleet. The Community Service Team has already started clearing the area. Some villagers have kindly donated ground covering plants and we have a small amount of money available to buy shrubs or a tree.

What we now need is some volunteer assistance to clear the ground and help with planting. So, we are having a 'working party' on Saturday July 9th from 10am to midday and would love to have some of the villagers join us. Just bring trowels, gloves, garden forks and a garden rubbish bag which can be emptied on site. Please be aware that the site is uneven and slippery in areas. All children are welcome but must be supervised. Drinks will be provided. Many thanks in anticipation. **Amanda and Sue (Community Centre Trustees)**

## **COLLINGHAM RAMBLERS WALKS FOR JULY 2016**

Sunday July 3rd	Ab Kettleby/Grimston	7 miles
Sunday July 17th	Denton/Harlaxton	7 miles
Sunday July 31st	Bardney	7 miles
Wednesday July 27th	Redmile	5 miles

### **NEW WALKERS ALWAYS WELCOME**

If you would like to join us on any of these walks please contact NINA WARD on [ninajward@live.co.uk](mailto:ninajward@live.co.uk) or 01636 678419 for more information and specific walk details.

### **Come along and join this friendly group!**

We provide an excellent variety of walks in Nottinghamshire and adjacent counties. Most Sunday walks are between 6 and 8 miles. Wednesday walks are usually about four miles with an optional pub lunch.

Walkers should provide snacks, drinks and packed lunches if appropriate.

Suitable footwear and waterproofs are necessary. **Nina Ward**



# Tamworth to Fradley Junction aboard n.b. Mulberry



Tamworth in Staffordshire was originally a Saxon settlement although it is known for the famous breed of pigs. The town still bears evidence of its strategic position on the banks of the River Tame having the remains of a castle skirted by a Norman moat. Today the town is not so outstanding except if you want a

bargain from Ventura Park, its out of town shopping experience. Close by, however, is Fazeley where a selection of old factory and mill buildings survives alongside the Coventry Canal. Here the Canal and River Trust have their regional offices as well as a service point for water and rubbish. Also at Fazeley is an impressive aqueduct that carries the canal northwards, away from Birmingham and Coventry, to join the Trent and Mersey Canal. The passage through farmland to the junction is just over 11 miles and manages to avoid the use of locks by twisting and turning past geographical obstacles and towns. The canal skirts Hopwas, Whittington and Huddlesford keeping to the south and west of the River Tame.

The canal was originally designed by James Brindley in 1768 but after much political wrangling and excessive financial overspend it didn't reach the junction with the Trent and Mersey until 1790. It did, however, prove to be one of the most profitable British canals and was still able to pay a dividend until after WW11, probably because of its location through the coal fields of the Midlands.

When we travel on this canal we generally devote a whole day for the journey as the route needs about 4 or 5 hours depending on how many other boats we meet. The bridge holes are narrow and bear the scars of many collisions and the water is shallow so our speed is almost as slow as the many ramblers who also enjoy the canal. The two pubs at Hopwas are very popular for meals and make a good destination for walkers from Tamworth or Fazeley but our next stop is Fradley Junction. Fradley is a pleasant country village where weekenders park their caravans or moor their boats in order to buy ice cream and stroll through the water park/nature reserve. There is also the pastime of gongoozling which is the sport of watching the boaters work through the flight of locks. Here

facing the junction is the Swan Pub, reportedly one of the most photographed in the country but known more locally as the Mucky Duck. Lynne Shapley

## **Winthorpe & District W.I.**



In the absence of Virginia Seager, Pat Nelson welcomed 24 members and 6 visitors to our June Meeting. A letter of thanks was received from Bloodwise for the £217 raised by the Ladies of the WI at the celebration Tea Party for the Queen's 90th Birthday Party. Diana Kitson sent thanks for

the flowers, card and good wishes received after her recent knee operation. Former Member Doreen Sharpe sent thanks for the card and good wishes sent and advised her new address in Collingham.

Notts Fed of W.I.'s advised of future events including the Autumn Meeting presenting History Wardrobe 'Tea Gowns and Tea Time'. Also included are Creative Sewing, New Members Evening, Ladies Luxuries and Lunch (Nottingham shopping and lunch event) Whist League and Go Karting.

Events in June - Meal at Lord Nelson Pub Besthorpe, Garden Day Hoveringham and Jazz Evening at Southwell

A presentation was made to retiring Treasurer Joy Hart thanking her for all her good work.

Speaker Madge Spencer 'Pottery' gave a professional but very entertaining demonstration on how to make various items (e.g. jug, bowl and candle holder) on the potter's wheel. She effortlessly produced items and then invited all to have a go. They did - and great fun was had by all!

### **POST OFFICE AT WINTHORPE COMMUNITY CENTRE on**

Thursdays. It has been agreed that the WI will serve coffee, tea and biscuits at the Community Centre on Thursday mornings between 10am and 12 noon – All welcome! This is planned to commence on Thursday 23rd June 2016 - PLEASE COME AND SUPPORT THE POST OFFICE AND THIS VILLAGE VENTURE!

WINTHORPE VILLAGE FESTIVAL SAT 23RD JULY 2016 – WI Stalls – refreshments – cakes – books – bottles – general sale items. Members asked to man the stalls and help with refreshments. Items were requested for stalls – e.g. cakes, bottles, books etc

### **W.I. FESTIVAL MINI BAKE OFF**

Children's Cake Decorating Competition. Decorate 6 cup cakes. Put them on a paper plate with name, age, and tel. no written on the underside of the plate. Bring to the WI stall by 1.30 pm on 23rd July. Age groups under 5, 5-8 years and 9-12 years.



Next meeting 14th July - Summer Evening with strawberries and wine in Frances's garden. **Hostesses** - The Committee **Viv Jackson**



# **ALL SAINTS**

## **WINTHORPE**

### **CHURCH NOTICES**

By the time you read this we will have had our Dedication Festival in June. As I sit typing this article at this keyboard Christine is upstairs typing on another one trying to sort out her talk for the service. I'll have to give a report on how it went next time

The concert we held on the weekend of the Royal Celebrations in June was attended by an enthusiastic and appreciative audience of 35. The concert itself was fantastic but the poor band members did not get much of a break at the interval as they were inundated with questions about their music and their instruments. The tiny sopranino recorders, a little under eight inches long, normally attract a bit of attention, as do the bass recorders at about three feet long. With the members of the group kindly waiving their fees and only taking minimal travel expenses we managed to raise a little over £200 towards the facilities fund. I would like to thank Sixteen Eighty Five for their generosity.

The church will once again be holding a Tombola stall at the village festival in July. If you have anything that you would like to donate as prizes then please pass it on to either Sylvia Lloyd or Joan Lord. The proceeds from the stall will be going towards the facilities fund.

**Ian Hasman** on behalf of Winthorpe Church PCC

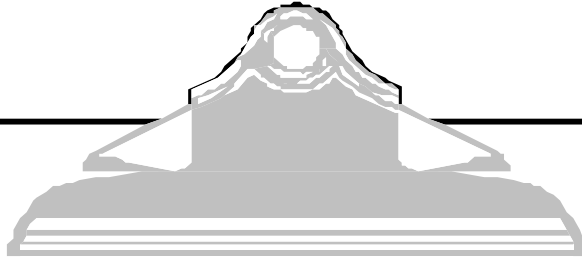
## Church Services for July



Sunday 3rd	9.00	Holy Communion	Holme
Sunday 10th	10.30	Holy Communion with Holy Baptism	Winthorpe
Sunday 17th	9.00	Morning Worship	Langford
	10.15	Morning Worship	Winthorpe
Sunday 24th	18.00	Evening Prayer	Winthorpe

The Church Bells may be rung for any of the Winthorpe services. The bells may be rung on Friday evenings between 7.00 and 9.00pm for practice. If you are able to ring or would like to learn how to ring then please get in touch with the Tower Captain, Ian Hasman, on 01636 679105 or e-mail him at [i.hasman@ntlworld.com](mailto:i.hasman@ntlworld.com).

**Church Cleaners** – Mrs Lloyd and Mrs Nelson Sylvia Lloyd



## JULY CALENDAR

Friday 1st	Summer Sizzler Winthorpe School 6pm-8pm
Saturday 2nd	Grand Re-opening Party Lord Nelson Pub Winthorpe 12-3pm 
Monday 4th	Green Bin Lunch Club 12.30 Community Centre Mobile Library
Monday 11th	Silver Bin and Brown Bin
Thursday 14th	WI Summer Evening
Monday 18th	Green Bin
Thursday 21st	Parish Council meeting 7.30pm
Friday 22nd	School end of term picnic
Saturday 23rd	<b>WINTHORPE SUMMER FESTIVAL</b> Community Centre 1pm – 5pm  (Family Bike Ride am)
Monday 25th	Silver Bin and Brown Bin
Wednesday 27th	Garden Club Visit to Sandringham Flower Show

ANSWER TO PAT'S PUZZLE IS Susan's birthday is on December 31st and the statement was made on January 1st.

**NB BIN COLLECTION IN HOLME VILLAGE ON FRIDAYS!**

‘Village organisations and local bodies – if at any time you would like to get in touch with a village contact, why not try the village website.’ [www.winthorpe.org.uk](http://www.winthorpe.org.uk)



