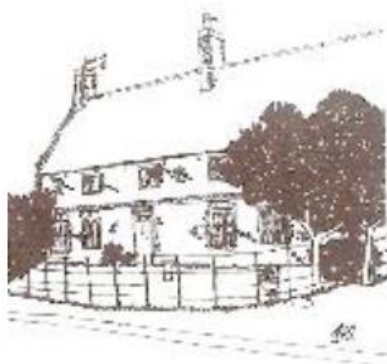




# FOCAL POINT



October 2023



## CHIROPLUS CHIROPRACTIC CLINIC

Dr Sarah Beales BSc (Hons)  
Doctor of Chiropractic  
1st Floor, Collingham Medical Centre

Back Pain? Neck Pain?

Hip Pain? Headaches?

Call us on  
**01636 610242**



## ***Mobile Stylist***

Winthorpe Village



Why not have your hair styled in the comfort of your own home by a professional stylist with 30 years experience

- Colouring
- Perms
- Highlights / Foils
- Cutting and Styling

Contact Diane on 07703523888

Email: [dianepipes71@gmail.com](mailto:dianepipes71@gmail.com)

## Mathematics Tuition

11- plus to A-level

$$\frac{1 + \sqrt{5}}{2}$$

Andrew

[apwm65@gmail.com](mailto:apwm65@gmail.com)

07383015001

DBS Certificate

## Home Tuition in Winthorpe

Experienced teacher,  
private tutor and GCSE examiner

Up to GCSE and A' Level:

English Language & Literature

Up to GCSE: French, History, R.E.

Contact Julie Hill: 01636 676079

email: [julie@readingrefinery.co.uk](mailto:julie@readingrefinery.co.uk)

DBS Certificate

## *Balderton Dry Cleaners & Launderette*

*We do home deliveries in Winthorpe,  
Langford and Holme on Tuesdays and  
Thursdays. You can also drop off via our new  
agent in Winthorpe - The Lord Nelson.*

*The Launderette* will wash and press bedding,  
shirts, workwear and football kits  
- all your washing needs!

*The Dry Cleaners* take mens and ladies wear,  
curtains, duvets, loose covers and wedding gowns.

*Phone for collection 01636 705487*

## Tallents Solicitors

Newark - Southwell - Mansfield

[www.tallents.co.uk](http://www.tallents.co.uk)

**Tallented** in law since 1774



## *Focal Point* 2023

Advertise with your  
local magazine

Shop Local

Support a local  
business

Reduce your carbon  
footprint

## **Thank you to all our advertisers, new and old**

It's great to have new advertisers on board – thank you. And for all our long-standing advertisers, a big thank you.

By advertising in Focal Point, and reaching out to the local community, you are part of a fantastic team of people, who are working for the benefit of everyone in Winthorpe, Langford and Holme. Without the income generated from your adverts, Focal Point could not survive and the villagers would lose a valuable resource.

If you are involved in a local business or enterprise, please consider placing an advert in Focal Point – even if you aren't looking to increase your business. Simply look upon it as a contribution to your community.

If you value your community, support local businesses who advertise in Focal Point. Let's help each other.

---

### **FOCAL POINT ONLINE EDITION**

The online edition of the magazine is easy to find on Winthorpe village website: [www.winthorpe.org](http://www.winthorpe.org)

Just follow the menus: Media and then Village Magazine.

As well as the current issue, you can read previous issues, going back as far as 2007!

---

## NOTES FROM THE EDITOR

This month, I decided to look for inspiration in my father's book of bedtime stories, which I have mentioned before in my editorial message. There on the page for 7<sup>th</sup> October, my grandfather's birthday, I found the story of The Old Apple Tree. To summarise: an old, gnarled, bent apple tree and a young, beautiful, straight apple tree grew side by side and the young apple tree was admired, whilst the old apple tree was ignored... until harvest time.

A man and a boy came into the garden and when the boy stopped by the young tree, the man said, "There's no fruit-picking to be done there," then 'placed his ladder against the twisted trunk of the old apple tree and mounted it. In a few moments he came down, his pockets bulging with beautiful rosy apples.

"This old tree yields more fruit every year," said the man.'

In the past couple of months, we have lost a few 'old apple trees' from our community but their spirit and their legacy live on among those who loved them and remember them. My grandfather was the best of men and every word he spoke to me was a seed which bore fruit. I'm sure that you would be able to say the same of a parent, grandparent, aunt or uncle. Generation after generation, we listen, we learn, we teach, we hand on our wisdom and experience. In this age of technology and the development of Artificial Intelligence, it's arguably more important than ever before that we instil something of ourselves in those young apple trees who come after us, in the hope that they will bear rich fruit when they come to maturity.

In this season of harvest festivals, the changing of the season, changing of the clocks, let's think about change and continuity as being interlinked. Age, experience and wisdom should be celebrated and passed on.

**Julie Johnson-Hill (01636 676079)**

**NEXT MONTH'S DEADLINE IS 18<sup>TH</sup> OCTOBER**

[winthorpefocalpoint@outlook.com](mailto:winthorpefocalpoint@outlook.com)

---

## *October Calendar*

---

When	What	Where
Mon 2 <sup>nd</sup>	Green bin	Winthorpe
Mon 2 <sup>nd</sup>	Line Dancing	Winthorpe
Tue 3 <sup>rd</sup>	Tuesday Club	Winthorpe
Wed 4 <sup>th</sup>	WAWA	Winthorpe
Fri 6 <sup>th</sup>	Green bin	L'ford/Holme
Mon 9 <sup>th</sup>	Silver bin	Winthorpe
Mon 9 <sup>th</sup>	Brown bin	All
Mon 9 <sup>th</sup>	Line Dancing	Winthorpe
Tue 10 <sup>th</sup>	Tuesday Club	Winthorpe
Wed 11 <sup>th</sup>	WI – Open Meeting	Winthorpe
Fri 13 <sup>th</sup>	Silver bin	L'ford/ Holme
Mon 16 <sup>th</sup>	Green bin	Winthorpe
Mon 16 <sup>th</sup>	Mobile Library	All
Mon 16 <sup>th</sup>	Line Dancing	Winthorpe
Tue 17 <sup>th</sup>	Tuesday Club	Winthorpe
Wed 18 <sup>th</sup>	Garden Club	Winthorpe
Thur 19 <sup>th</sup>	Parish Council Meeting	Winthorpe
Fri 20 <sup>th</sup>	Green bin	L'ford/ Holme
Sat 21 <sup>st</sup>	Trafalgar Day	
Mon 23 <sup>rd</sup>	Silver bin	Winthorpe
Mon 23 <sup>rd</sup>	Brown bin	All
Mon 23 <sup>rd</sup>	Line Dancing	Winthorpe
Tue 24 <sup>th</sup>	Tuesday Club	Winthorpe
Fri 27 <sup>th</sup>	History Group	Winthorpe
Fri 27 <sup>th</sup>	Silver Bin	L'ford/ Holme
Sat/Sun 28 <sup>th</sup> /29 <sup>th</sup>	British Summertime Ends, the clocks go BACK	
Mon 30 <sup>th</sup>	Green bin	Winthorpe
Mon 30 <sup>th</sup>	Line Dancing	Winthorpe



**This month, the mobile library will call at our villages  
on Monday 16<sup>th</sup> October**

Mobile Library Routes and Timetable 2023 for Winthorpe, Langford and Holme*				
Stop No.	Village	Location	Arrive	Depart
1	Winthorpe	The Spinney	9.50am	10.10am
2	Winthorpe	junction of Pocklington Crescent and Branston Close	10.15am	10.35am
3	Winthorpe	junction of Gainsborough Road and Woodlands	10.40am	10.50am
4	Langford	Langford Hall Farm	10.55am	11.10am
5	Holme	Snaefell, Langford Lane	11.20am	11.30am
6	Holme	Southview Farm	11.35am	11.55am

\*Information taken from [inspireculture.org.uk](https://inspireculture.org.uk)

Don't forget to contact the editor about any events or activities happening in Winthorpe, Langford or Holme, so that they can be included in Focal Point.

Email: [winthorpefocalpoint@outlook.com](mailto:winthorpefocalpoint@outlook.com)

Tel: 01636 676079



**COLLINGHAM MEDICAL CENTRE**

High Street  
Collingham  
Newark NG23 7LB  
General Enquiries/  
Emergencies: 01636 892156  
Email: [collingham.medicalcentre@nhs.net](mailto:collingham.medicalcentre@nhs.net)

**Drs Fearn, Li, Coulton, Suresh, Schuerch, Rees, Kathirgamachelvam**

Monday - Friday 8.00am-6.15pm

Telephone number: 01636 892156

Appointments and General Enquiries line open 8.00am – 6.15pm

Prescriptions line open 10.00am – 12.00pm

*In addition to our normal medical services, we can offer:*

*Child and Adult Immunisations, Well Person Health Checks, Travel Advice, Minor Injuries, Joint Injections and Minor Ops (including cryotherapy)*

Our communication with patients relies on current information. If your personal details change, including telephone numbers, please let the practice know. Thank you.

Out of Hours Service is provided from 111 when the surgery is closed.

Website: [www.collinghammedicalcentre.co.uk](http://www.collinghammedicalcentre.co.uk)



**COLLINGHAM PHARMACY**



**YOUR** local pharmacy dispensing NHS, Private and Veterinary prescriptions.

Offering a wide range of medicines, vitamins, toiletries, pet medicines and seasonal gifts.

## **NHS Services Include:**

- ✓ **Medicine Use Review**
- ✓ **Morning After Pill**
- ✓ **Blood Pressure Measurement**
- ✓ **Minor Ailments Scheme**

High Street, Collingham, Newark, NG23 7LB

**Tel:** 01636 893038

**email:** [collingham.pharmacy@nhs.net](mailto:collingham.pharmacy@nhs.net)

Mon 8.45am-6.30pm Tue-Fri 8.45-6pm Sat 9am-12.30pm Closed 1pm-2pm daily

## Winthorpe Garage/Drive Sale, Saturday 16th September

The organisers would like to thank all those villagers who took part by selling items and providing tea, coffee & cake at the village hall.

Feedback has been good and in total we managed to raise £140.00 for the Pocklington Crescent Defibrillator Fund. Special mention should go to Leanne Cutts and Pauline Lockwood for the catering at the village hall, which raised £89.00, and to one individual vendor (you know who you are!) who donated all of his sale proceeds to the fund.

**Les Murray & Richard Whitehead**

## NEWARK FOODBANK



Thanks to everyone who contributed this month to our collection for Newark Foodbank. The most recent delivery from us to the Foodbank warehouse weighed in at **38.6kg**. Excellent. Please keep it coming!

Especially needed now are: long life milk, tinned potatoes, tinned meat, tinned fruit, tinned or microwaveable sponge puddings, tinned rice puddings, pasta sauce, soup, size 5 and size 6 nappies.

Always needed are: breakfast cereal, sugar, biscuits, cereal bars, toilet rolls, jam, toiletries, savoury rice packets.

If you haven't donated before, it is very easy. Winthorpe Collection Points are:

- The shop at the Lord Nelson, during shop hours
- The swing bin at 11 Gainsborough Road, available 24/7.
- The church porch, Sun 10am-12noon, Thurs 1.30-3.30pm

Alternatively, if you would like to donate through your bank, the details for the Foodbank are: NatWest, sort code 54 10 23, a/c no. 19405812

*Jane White*





**Newark  
Showground**

**Create inspiring  
events** with our  
flexible spaces

- **Business Meetings**
- **Conferences**
- **Exhibitions**



**Ready to shape your next event?**

[www.newarkshowground.com](http://www.newarkshowground.com) ☎ 01636 705796

## WINTHORPE VILLAGE HALL

The Annual General Meeting will take place in the Village Hall on **Thursday 9<sup>th</sup> November**, starting at 7pm.

### *Community Cuppa*

Do come along and enjoy a nice cup of tea or coffee with biscuits – and sometimes even a slice of cake! Catch up with old friends, make new friends, have a chat and find out what's happening locally.

Starting on **Tuesday 3<sup>rd</sup> October**, this event will take place every Tuesday in Winthorpe Village Hall from 2pm – 4pm. If you are interested in volunteering as a host, please contact Susie Conning.

We are grateful to receive funding from Newark & Sherwood District Council to host this FREE event. We would like to thank Vanessa Cookson for awarding the Village Hall this grant, which pays for the rent to run this scheme for the benefit of the village.



For information about the use of Winthorpe Village Hall for a club, a fundraiser or a private event, please contact Bob McClymont on 01636 705952 or Susie Conning on 07968855448.

### **Defibrillator codes for Winthorpe**

Community Centre: C159X  
Village Hall: CY543

### **Defibrillator code for Holme**

Phone Box at junction of Langford Lane and High Steeet. No code needed, as the lock was removed some time ago, for good reasons.

**Please contact the editor with the defibrillator code for Langford, if you would like it to be included in future editions of Focal Point.**



## **COLLINGHAM CARS**



**Exclusively serving Collingham and surrounding areas**

Fully Licensed Private Hire/HackneyCarriage : DBS Checked :  
Airport pick up/drop off : Hospital appointments : Shopping trips :  
Competitive rates : ANY journey undertaken : Female drivers :  
Call Penny on 0783 33 15 928



## **CLIVE SMITH** **Your Local Decorator**



Interior & Exterior Painting and Decorating  
Quality Work – Prompt Attention – Free Estimates

Tel. 01636 679904 or 07742412081

## **TOWN & COUNTRY JOINERY SERVICES** SERVICING THE WINTHORPE AREA

- In the garden: fencing repairs, garden gates, re-felting shed roofs
- In the home: fitting kitchens, internal doors, general joinery & repairs

For a free estimate call Keith on 01636 612000 / 07971325270  
Quality Work – Fully Qualified and Insured – Est. 1992

## **PATTERSONS** *Floorcovering Specialists*

We offer a free no obligation measuring and sample delivery service  
in Newark and the surrounding villages.

60 Cartergate Newark – Notts NG24 1UB - Tel. 01636 703394

Email:- [info@pattersonscarpetsltd.co.uk](mailto:info@pattersonscarpetsltd.co.uk)

Web:- [www.pattersonscarpetsltd.co.uk](http://www.pattersonscarpetsltd.co.uk)

## Winthorpe Community Centre Charity

Please note that the Annual General Meeting of the above Charity will take place in the Community Centre on **9<sup>th</sup> October 2023 at 7.00pm**.

The Meeting will receive a report from the Chairman and the Treasurer and will also cover the election of Honorary Officers and Trustees for the next 12 months. The AGM will be followed by a meeting of the elected Trustees.

### CAN YOU HELP?

The Winthorpe Community Centre Charity were saddened to hear of the passing of John Nelson, who had been a fantastic Trustee of the Charity for over 20 years. John will be sadly missed.

Following the retirement of another Trustee, we currently have two vacancies. We are a small friendly Charity who only have a couple of meetings a year. Trustees usually prefer to join either the fundraising or maintenance committees and the role is not onerous. It is always nice to have new faces, so should anyone from the Parish be interested in joining the Charity, please email the Secretary, Michele Cammack:

[cammacks31@gmail.com](mailto:cammacks31@gmail.com)

Thank you

**Peter Bateson** (Chairman, WCCC)

## Winthorpe Community Centre

**100 100 100 100 100 100 100 100 100 100**

Winners for September		
1st	£43.20	Lee Cammack
2nd	£21.60	C Mabbott
3rd	£7.20	Bob McClymont

**100  
Club**

Congratulations to our winners. Please contact Nina Adams if you would like to join the 100 Club: [ninjab71@gmail.com](mailto:ninjab71@gmail.com)

*ALL SAINTS CHURCH, WINTHORPE*

## **HARVEST SUPPER**

**Saturday 21<sup>st</sup> October 2023**

Venue: Winthorpe Community Centre

Time: 7.00pm (for a 7.30pm start)

**Ticket price: £12.00** [to include one glass of wine]

Please feel free to bring your own drink for the table

**Tickets available from PCC Members** (see Church Notes)



**Collingham & District  
Local History Society**  
Charity Number: 1164058

**‘Votes for All!’**

**A time-traveller’s guide to suffrage and voting in Nottinghamshire**

**Part 1: 1832 – 1846**

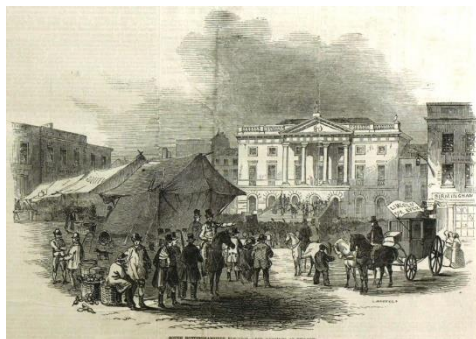
**A talk by Christine Hasman**

**Wednesday 18<sup>th</sup> October at 7.30pm.**

Collingham Memorial Hall.

Members Free. Non-Members £4.

Raffle.



[www.collingham-history.org.uk](http://www.collingham-history.org.uk)

## **Dorothea Robinson (1923-2023)**

I was very sorry to hear of the death of Dorothea Robinson on 26<sup>th</sup> August, less than two weeks before she should have been celebrating her 100<sup>th</sup> birthday on September 6<sup>th</sup>. Although I never met her, I had heard of her and had hoped to talk to her about her memories of life in Winthorpe, where she had lived since World War II. We never managed to have that conversation.

At the beginning of August, I was contacted by Dorothea's granddaughter, asking if we could feature her grandmother in September's edition of Focal Point, to mark her 100<sup>th</sup> birthday, as a surprise from her family. Naturally, I was delighted at the prospect. Unfortunately, within a few weeks, the situation had changed dramatically and, as it turned out, the birthday celebrations and the birthday card from King Charles were not to be.

And so, instead of a 100<sup>th</sup> birthday message to Dorothea, we pay tribute to her as the longest living resident of Winthorpe until she was taken from us just a few weeks ago.

Dorothea was the daughter of Mr and Mrs J W Mills, who lived at The Lodge, Winthorpe. Several discussions and conversations I've had with wise and informed villagers have confirmed that, whilst there were several houses bearing that name in the village, this particular one is the red brick house beside The Lord Nelson.

In 1944, Dorothea married Ernest Robinson and the newly-weds moved into a house in Holme Lane, where they lived until 1961, before relocating to Gainsborough Road, in the house opposite the phone box, where they stayed... and stayed.

Dorothea was a long standing member of Winthorpe WI and joined in with the 50<sup>th</sup> anniversary celebrations. She celebrated the end of World War II and the coronation of Queen Elizabeth II in this village. She must have reflected on so many monumental changes during her lifetime, as she approached her 100<sup>th</sup> birthday. As we express our condolences to Dorothea's family, we hope that they will draw comfort from their cherished memories of her.

**Julie Johnson-Hill** (editor)

Winthorpe WI  
invites you to an Evening  
with  
Stephen Booth  
Award-winning Crime Writer

Listen to him talk about his  
novels - take the opportunity  
to purchase one of his books

Refreshments:  
glass of wine / soft  
drink



**This is an Open WI Event**

All Ladies and Gentlemen  
welcome

**£5.00 for non-members**

**Venue: Winthorpe Community Centre**

**Wednesday 11<sup>th</sup> October 2023**

**Time: 7.30 pm**

## **Winthorpe WI**

Our first meeting after the summer recess kicked off by celebrating one birthday and a member's Diamond Wedding Anniversary.

We had a well stocked sale table where members brought along their pre-loved possessions to sell, with 10% of the proceeds being donated to WI funds.

Our topic for the evening was "Painting Flowers", as demonstrated by Horace Staniland and Gwen. Horace confidently predicted that anyone can draw. He obviously hadn't seen anything drawn by me! He then proceeded to show us how to extract a flower from three tiny watercolour dots, which he made look relatively easy. Then it was our turn. I have to say that it was surprisingly therapeutic, even for a person who doesn't enjoy drawing. Amazingly, it kept us quiet and, although what we did produce resembled a flower of some description – even mine – not many resembled what Horace had drawn.

As well as stamps, the WI are now recycling ink cartridges, so if anyone wishes to dispose of spent ink cartridges, we will be happy to receive them.

Our next meeting will be held on 11<sup>th</sup> October, where we will be meeting the author Stephen Booth (See separate notice).

### **BOOK CLUB**

Book Club resumed on 15th September to review *A Slow Burning Fire* by Paula Hawkins. The story begins with the murder of Daniel on a canal boat. There are four main suspects, all of whom are interlinked in some way and it isn't until the end that you find out who had actually done the deed. A well written book, which we all enjoyed.

Our next meeting will be on Thursday, 19<sup>th</sup> October at the Lord Nelson, when we will be reviewing *The Lost Man of Bombay* by Vaseem Khan. The Book Club is open to all WI members.

**Pauline Lockwood**



## Winthorpe Allotment

Winthorpe has a vibrant Allotment community, growing everything from apples to zucchinis/courgettes. The allotment is a great place to get plenty of fresh air, exercise and meet other like-minded people, growing fresh fruit and vegetables.



Each year we have plots becoming available, so if you would like to start growing your own crops and become a member of our allotment, please contact me: [miles.harriman@hotmail.com](mailto:miles.harriman@hotmail.com)

With an annual fee of only £25 per year, an allotment plot in Winthorpe could be yours for the coming season.

Winthorpe Allotment supports Crop Drop delivering excess fresh produce to local community food schemes.

**Miles Harriman**

## **Winthorpe Garden Club**

It was a good turnout for our first meeting of the 2023/24 programme and we were pleased to welcome a few new faces – visitors and new members. We began by expressing our sadness at the loss of John Nelson in August and sympathy for his widow, Pat, who has left her home in Woodlands since John's death. Another sad piece of news was that Di Galsthorpe, who used to organise Garden Club outings, has died recently, her funeral to take place at Averham on 27<sup>th</sup> September.

Our speaker for the evening was Rachel Barrowcliffe, who is the Head Gardener at the Tropical Butterfly House and Wildlife Conservation Park in North Anston near Sheffield. Rachel gave a very interesting talk about her work on the 7.5 acre site, which includes specialist planting to support pollinating insects and the breeding and conservation of rare butterflies, such as the Glass Wing.

We learned about plants such as lantana, which provides a good source of nectar all year round, and the woodland passion flower which feeds zebra butterflies. We also learned that, as some rare and highly specialised tropical plants can no longer be imported, the conservation park works with collectors in this country who have existing specimens of such plants, to secure food sources for the rare insects in the Tropical Butterfly House.

Rachel entertained us with photos of the gardens and the environment, as well as stories of the escapades of some of the resident birds and animals. She also explained the difficulties of managing the site during and after the pandemic, with all the risks and restrictions that had been in place through that time. It was encouraging to hear that the café area had won an award since re-opening and that work had gone ahead with the new butterfly house, which opened in spring 2023. Many of us agreed that this might be a good choice of venue for a future Garden Club outing.

Our next meeting is on 18<sup>th</sup> October, 7.30pm at Winthorpe Community Centre, when our guest speaker will be Sally Smith, presenting a talk entitled *The Wonderful World of Weeds*. Everyone welcome, the first visit is free.

**Ian Wilson**



## Winthorpe with Langford Parish Council

The meeting of the Parish Council on Thursday 21<sup>st</sup> September, held in the Village Hall, was attended by two residents, two representatives of Winthorpe and Coddington Cricket Club and one of our District Councillors, in addition to members of the Parish Council.

This was an extensive meeting, covering a wide range of issues and points which had occurred since the Parish Council last met in July. We began with representatives of the Cricket Club updating us on how the club has been developing over recent times, including planning approval for improvements to the existing pavilion. We also took the time to discuss residents' views of dog walking around the cricket field. Following the discussion, we would like all dog walkers to know that the Cricket Club has reconfirmed that dogs can be walked anywhere around the field, at any time, on a lead (not on the playing area) but also off the lead anywhere on the field (including the playing area) outside the cricket season.

We would of course ask that **ALL** dog mess is picked up by owners and placed into the red dog bins situated around the parish. Whilst we have noted a significant improvement in recent months, we all need to work together to ensure that this is eliminated entirely. As you will remember from the last edition of Focal Point, we have now freed up access to the Community Centre Field for dog walking, so hopefully this meets more of the need for exercising space for dogs (and their owners!) across the parish.

The recent consultation on possible improvements on Jubilee Meadow was discussed and it was agreed that, although Phase 1 would go ahead, Phase 2 would not. This is covered in more detail in the article immediately following this one.

As mentioned earlier this year, we have applied to Seven Trent Water for funding to improve the 'Coronation Bank' behind the Community Centre. This area of land, which could be a beneficial area for all residents, is currently inaccessible because of weed growth. The plan is to remove the weeds, install

a path and planting, including an extensive wildflower area at the rear of the site towards Holme Lane. The Severn Trent Water grant committee will meet in October, so we will be able to tell you in November's edition of Focal Point whether or not our application has been successful.

In addition, we are continuing to look at ideas for improvements to the old skatepark area between The Jubilee Meadow and The Cricket Club Field. We agreed at the last Parish Council meeting to improve the existing fencing, shelter and basketball area by cleaning down and re-painting all metal work; this will be undertaken later this year. Ideas for the area are still in the early stages but, if our application for funding is successful, changes may include new play equipment and picnic style benches etc. We will ensure we keep you up to date on the ideas; if you want to get involved please contact me.

In planning this month, there have been no new applications; recent applications, including a variety of tree works across the parish, have all been accepted.

Many of you will have been subjected to the impact of the diversion which National Highways put in place over three recent weekends to allow for resurfacing work to be carried out at Winthorpe Roundabout. The very poor diversion design and signage created significant disruption in the area and led to hundreds of vehicles being sent into Winthorpe village with nowhere to go! I want all of you to know that we contacted the National Highways Control Room and the police on the first night this happened; I received a call from the manager responsible a couple of days later. He apologised and assured me that it would not happen again. Yet, on the following weekend, exactly the same thing happened, only this time much worse. This led to many residents trying to help drivers to turn around and get out of the village. Consequently, I have now sent an official complaint to National Highways and await a response, watch this space!

The next meeting of The Parish Council will take place in the Village Hall on Thursday 19<sup>th</sup> October starting at 7.30pm; in the meantime if you have any questions, comments or suggestions, please contact me:

[paul@bridgfordss.co.uk](mailto:paul@bridgfordss.co.uk)

**Paul Smith** (Chair, Winthorpe with Langford Parish Council)

# Jubilee Field (Meadow) Enhancement Proposal

## Consultation Update

As you will be aware, we recently leafletted all residents of Winthorpe Village, to put forward two possible options for carrying out improvements to the Jubilee Field, next to the Cricket Ground. One suggestion we received in response was to rename the field – *Jubilee Meadows*, which we believe is a more fitting name for what will be an even more attractive area within of our parish.

I would just like to say a big thank you to those of you who have responded to me by e-mail and also face to face. I think that this kind of open interaction is really helpful to making future decisions about the Parish, where everybody has the opportunity to have their say. We received over 60 responses and, amongst the more specific comments, there were also some general suggestions which will help us take other informed decisions in the future.

**The general content of the views we received are summarised below:**

**Phase one** – tree and shrub planting has a clear majority positive response from almost all residents, who support having a more wildlife friendly, educational, welcoming environment with picnic facilities and access for dog walking.

**Phase two** – the provision of a football pitch has a clear majority negative response from most residents, who cited both perceived and real issues: questionable suitability of the field given flooding (standing water) present most winters; inadequate community centre changing room and shower facilities for two adult teams; increased traffic down Woodlands; limited parking facilities; perceived limitations placed on dog walking coupled with fears of a repeat cricket field experience; limited benefits for the majority of village residents, as compared with a minority of external footballers etc.

As a result of the feedback received, we have decided to go forward with Phase one, which should now start this Autumn. At the Parish Council meeting on 21<sup>st</sup> September, we discussed the options and decided **not** to progress the football pitch at Jubilee Meadow, though we will review the

situation in 12 months' time; in the meantime we will consider whether there are other possible options.

We have also pulled together and summarised all the comments from residents, now available to read on the Village Website under the Parish Council tab and... Parish Council Meeting Minutes.

Many thanks,

**Paul Smith** (Chair, Winthorpe with Langford Parish Council)



### ***THINK AGAIN***

#### ***The Winthorpe Residents' A46 Consultation Group***

There have been no further meetings with National Highways since 9th August, although individual communications have been received by the group.

Archaeological surveys have been undertaken along fields neighbouring the A46 around Winthorpe over the last few weeks. These have now concluded. Further surveys are expected later in the year.

If you have any specific questions or concerns about the scheme, please contact Think Again on the email below. The core working group will meet mid-October and we would welcome any views or input from the village using the links below.

The dedicated Think Again website is available as a single point of information and communication for the village. It can be found by following the link: <https://a46thinkagain.org.uk> [A46WinthorpeVillage@outlook.com](mailto:A46WinthorpeVillage@outlook.com)

Facebook page: <https://www.facebook.com/ThinkAgainA46Newark>

Twitter: <https://twitter.com/ThinkAgainA46>

## Winthorpe with Langford Neighbourhood Plan - Update



Following the 6-week Neighbourhood plan draft consultation process, which was undertaken earlier this year, we have taken into account comments received from residents, local landowners and Newark and Sherwood District Council. This has helped to improve and fine tune some of the content and we have now updated the document to reflect these changes.

During this process we agreed to hold a Zoom discussion with N&SDC's Policy Management and Infrastructure team to discuss/answer the comments they made on the content of the draft plan. This was a really useful discussion and we have taken on board many of the comments they made; the plan is in the process of being updated as a result. During the discussion, it became apparent that the Winthorpe 'Village Envelope', which we had referenced in the plan, no longer exists and had been removed by N&SDC at the same time as all other village envelopes had been rescinded, several years ago. We were told during the meeting, however, that we were in a position to define a new village envelope in the Neighbourhood Plan.

Following this meeting, a new meeting of the Neighbourhood Plan Working Group was arranged for Wednesday 19<sup>th</sup> September, to discuss defining the village envelope and to draft the agreed extent of the envelope onto a plan for inclusion in the Neighbourhood Plan. Work is now underway to draft this new version of the village envelope, together with changes and adjustments to the wording within the Neighbourhood Plan.

Once this is complete, which is expected to be mid-October, the plan will then be circulated to all statutory consultees and all residents of the parish as a final draft document. This consultation will be for a period of 6 weeks, after which the Working Group will consider all comments and make any further amendments/changes necessary. In November it will then be forwarded to N&SDC for them to progress the next stage. All residents will then have an opportunity to vote to approve or reject the Plan during a Referendum, which is likely to take place early in 2024.

As usual, we will continue to keep you updated on progress of the Neighbourhood Plan; in the meantime you can still access the Draft Plan and other documentation under the 'Neighbourhood Plan' page on the Village Website.

If you have any comments on any of the points above or need more information on the Plan, please contact me: [paul@bridgfordss.co.uk](mailto:paul@bridgfordss.co.uk)

## **“ON THE ROAD AGAIN”**

Inspired by Elaine’s magnificent achievement in 2022, Andrew and Elaine Parkin are setting off to attempt the next 100 miles of the Camino di Santiago de Compostela.

Santiago de Compostela is the capital of Galicia, in northwestern Spain. The city has its origin in the shrine of Saint James the Great, now the Cathedral of Santiago de Compostela, as the destination of the Way of St. James, a significant pilgrimage route since the 9th century.

Elaine says, “We’ve not asked for sponsorship this time but if anyone feels they would like to donate to the children’s liver disease foundation (CDLF) please do. We are still hopeful for a breakthrough in the research, which would help Ellie, our granddaughter.”

<https://childliverdisease.org>

**Elaine and Andrew Parkin**

## **Voices from the past: life in Winthorpe, Langford and Holme** **Please send your memories of life in our villages to the editor**

Great to read “voices from the past” in September’s Focal Point. Our family have been the custodians of Langford Crossing Cottage since 1964 and it has been a Whittaker family home ever since – a third of the age of the building.

My mum Lillian was the last gate keeper to open the gates before the automated barriers arrived in 1969 – some of you may even remember her. One question often asked by visitors is, ‘Don’t the trains bother you?’ The answer is no; wherever you live there can be background noise and trains do pass through quickly. It is mostly a tranquil place to live, with countryside views from all aspects.

I also remember walking to Collingham in school holidays across the footpaths in farmers’ fields; these paths are still present today for people to walk along and enjoy.

**John Whittaker**



# EDLIN ROOFING

Contact us for a free quote, no job too small

01636 674884

07983604893

[richardedlinpropertieservices@hotmail.co.uk](mailto:richardedlinpropertieservices@hotmail.co.uk)

[www.edlinroofingnewark.co.uk](http://www.edlinroofingnewark.co.uk)



## GEOMETREE MATHEMATICS

Private maths tuition available from local tutor:

Functional Skills	£25 per hour
GCSE	£30 per hour
GCSE to A-Level Bridging Course	£30 per hour
A-Level	£40



**First lesson free.**

Single topics to full course available

Hi, My name is Paul and I am a recently retired maths teacher. Do you need to catch up after poor teaching in lockdown, especially if you have just started A-Level?

For Further details contact Paul (DBS checked), references available:

07789175957

Pauldewison771@gmail.com

### Why Advertise with Focal Point?

- **Reach local people – Focal Point is delivered free of charge to over 400 homes and businesses within the villages of Winthorpe, Langford and Holme. It's also available on Winthorpe village website.**
- **Support your community – Focal Point advertisers help us to remain viable, bringing articles of local events, activities and interest to local residents.**

### Focal Point Advertising Rates

- **1/6 page: £6.00 or £50.00 for 12 consecutive months**
- **1/4 page: £9.00 or £81.00 for 12 consecutive months**
- **1/3 page: £12.00 or £108.00 for 12 consecutive months**
- **1/2 page: £15.00 or £135.00 for 12 consecutive months**
- **Full page: £30.00 or £270.00 for 12 consecutive months**
- **EXTRA DISCOUNTS AVAILABLE FOR EVENTS, GROUPS AND ORGANISATIONS WITHIN OUR NEIGHBOURING VILLAGES**

## **Change the clocks – BST to GMT, but what about ST?**

Sandringham Time (ST) was the inspired idea of King Edward VII who altered the clocks on his estate at Sandringham in Norfolk to half an hour ahead of Greenwich Mean Time. This was the official time on the estate between 1901 and 1936.

Sandringham was bought by the then Prince of Wales in 1862 for the princely sum of £220,000. He bought it as a private retreat away from London, where he could indulge his passion for hunting. It was this passion for outdoor pursuits that led to the introduction of Sandringham Time, and not the rumoured lack of timekeeping on the part of his wife, Princess Alexandra, who was constantly late!

### *A point of view from the Vicarage Landing*

October must be a favourite month for village bears because it's nearly as good as Christmas and Easter. It's Harvest Festival time and there will be lots of delicious feasts in churches and village halls. If I don't get to one, I hope someone brings me a cake: apple and honey are my favourite flavours!

I've been getting around the Vicarage a lot over the last few weeks. Along with the Christmas decorations and a shelfful of sheets and towels from the airing cupboard, I was carried over the landing to the spare bedroom because the nice man from the diocese came to replace the water heating controls. I listened while he worked and he finished quickly, but I think Mandy forgot about me, the Christmas decorations, and the sheets!

Eventually, she came to fetch me and, as a surprise, she took me straight downstairs. This is because the little human who comes to visit was here, and I was meant to play with him. He is toddling everywhere now and, although he's normally very cuddly, he was more interested in sorting out the paperweights and climbing up the fireplace than having a real bear hug from me. This got Mandy very excited. I don't know why, but she seems to worry more about him than me. I wonder if she'll take him to a harvest feast.

Enjoy October and if I get back to the landing, I'll tell you more about life there next month.

Isaiah





# THE LORD NELSON

*at Winthorpe*

Call: 01636 707705

Find Us on Facebook or Instagram : The Lord Nelson at Winthorpe

**Village Lunch:** Tuesday 3<sup>rd</sup> October, two courses for £14  
Pop in or call the pub for menu options

**Quiz Night:** Tuesday 10<sup>th</sup> October, £1.00 per person entry fee  
Booking essential. Why not add dinner for £8.00?

**Steak Night:** Every Wednesday  
Two rump steaks and a bottle of house wine for £39.00  
Chicken, Vegetarian and Fish options available

**2-4-1:** Every Thursday evening, on all main courses

**Open Mic Night:** Monday 16<sup>th</sup> October  
Fancy yourself as the next Harry Styles or Becky Hill? Come down and join in!

**Saturday 28<sup>th</sup> October**  
**We are hosting a Halloween night**  
**Tickets are £5, available from the pub**

Don't forget that we still have the onsite shop, newspapers  
and Fish and Chip Takeaway  
Post Office every Thursday from 9am until 12 noon

*Thanks from Emma and the Team*



# OCTOBER'S REFLECTIONS



Dear Friends,

What is good news for you? In 2001, when I was at theological college, I went on a two-week media placement to Hull, where I spent time at Hull Daily Mail and Radio Humberside. I had a great time, and I went armed with this question: what is good news? Maybe unsurprisingly, the answer from those great institutions is that good news is whatever people will pay to read and hear. That wasn't all I learnt though: I learnt how to find a story when nothing seems to be happening, and of course where there are people, there is always a story. I learnt about asking good questions and listening to the answers, so, when I went with a reporter to investigate the painting of Beverly Minster's railings (top story on a quiet day!), I observed how she turned that mundane event into the story of a young man, his first day at work and how he got there. His story made the front page of his local paper.

Sometimes good news finds us. I was so grateful to find this message in the prayer cards at All Saints' in Collingham: "I pray that whoever may read this knows they are loved, that their place in this world was ordained by the almighty, that their life has meaning. Amen"

Thank you to whoever wrote that. I am pleased every time I read it and I take that reminder seriously. This is good news and it's true for all of us. Maybe we could all try to give good news messages and look for good news stories.

Some good news is that it's Harvest Festival season and we have lots to thank God for as well as everyone who produces our food. Do join in our Harvest celebrations, we'd love to see you there and it's right to celebrate good news together.

*God bless you,*

**Revd. Mandy**

Tel. 01636 361657 email: [revdmand@hotmail.com](mailto:revdmand@hotmail.com)



## All Saints' Church, Winthorpe

In September, we held two wonderful funerals for Des Aldridge and John Nelson respectively, which were so well supported by the village, doing both families proud, I think.

This month we host one of our special Services: our Harvest Festival, on **Sunday 8<sup>th</sup> October** at 10.30am, which will include Holy Communion. We will be very happy to accept Harvest Gifts, which will be taken to the Newark Women's Refuge. At the beginning of next month, on 5<sup>th</sup> November, we will host our Patronal Festival for All Saint's Day, in the form of a Songs of Praise. We hope that many villagers will come along to raise the roof in celebration.

Tickets for our Harvest Supper on **Saturday 21<sup>st</sup> October** are on sale now and available at a cost of £12 from: Sharon (Woodlands), Joan (Gainsborough Rd), Pauline (Pocklington), Jane (Old Rectory Court) and myself (Gainsborough Rd). There will be a Raffle and Pat Finn Quiz as usual.

Please remember in your prayers any villagers known to you who are ill, hospitalised or facing a bereavement at this time.

Tisha Applewhite Churchwarden (643763)



**\*\* Flower Ladies \*\*Church Flowers – Harvest Festival\*\***



Please could you bring your arrangements from **2pm on Friday 6<sup>th</sup> October**, with removal from **2pm on Monday 16<sup>th</sup> October**. Thank you so much.

**Church Cleaners:** Miss T Applewhite



## St. Giles Church, Holme

Hello from St Giles Church, Holme.

The farmers have been very busy around Holme and it's been a relief to see the grain harvest being gathered in, after so much rain. The maize crop has grown to quite a height and that must be good for the feed for the cattle in the village.

On the third week of September, it was Collingham Show and fortunately we had a glorious day in many respects. There were many friends from Holme and Langford attending and it was a joy to see so much produce on display; we congratulate Neil Grebby on winning the Best in Show award. The Lancaster from the BBMF made four spectacular passes over the huge crowd, and there were some fine classic vehicle and tractors on display, including examples from local residents.

The Saturday before Collingham show it was the Ride and Stride event; we had twelve visitors, mainly cyclists, who signed in at the church.

Holme Harvest Festival will be on **Sunday 8th October** at 6pm. Everyone is warmly invited to sing the well-known hymns and give thanks for the harvest, as the countryside takes on the autumn shades for 2023. Our next service in the church, to be taken by Rev. Mandy, will be on Sunday 1st October; if you can make it, you will receive a very warm welcome, with coffee and biscuits afterwards.

Kind regards, Nigel Priestley and Doreen Hallam.  
Phone, 01636 892020, email: [nigel.priestley10@gmail.com](mailto:nigel.priestley10@gmail.com)



# Church Services for October 2023



<b>Sunday 1<sup>st</sup></b> (17 <sup>th</sup> after Trinity)	9.00 a.m.	Holy Communion	Holme
<b>Sunday 8<sup>th</sup></b> (18 <sup>th</sup> after Trinity)	10.30 a.m.	Harvest Festival with Holy Communion	Winthorpe
<b>Sunday 8<sup>th</sup></b>	6pm	Harvest Festival	Holme
<b>Sunday 15<sup>th</sup></b> (19 <sup>th</sup> after Trinity)	10.15 a.m.	Morning Worship	Winthorpe
<b>Sunday 22<sup>nd</sup></b> (20 <sup>th</sup> after Trinity)	10.00a.m.	Morning Worship	Langford
<b>Saturday 28<sup>th</sup></b>	3.00p.m.	<b>East Trent Memorial Service</b>	Collingham St.John's
<b>Thursdays</b>	1.30 – 3.30p.m.	Open Church	Winthorpe
<b>Every Day</b>	10.00 – 4.00p.m.	Open Church	Holme Langford

For more information please visit the East Trent Churches website  
[www.easttrentchurches.org.uk](http://www.easttrentchurches.org.uk)

E. GILL & SONS<sup>INC.</sup>  
Funeral Directors



*'Our family caring for your family'*

The Gill family are proud to have provided care and advice  
to families in the Newark and District Area for over 100 years

We offer pre-paid funeral plans

55 Albert Street, Newark NG24 4BQ Telephone: 01636 677461



## FULLERS LANDSCAPING

GARDEN DESIGN &  
LANDSCAPING

Contact Ed on 01522 868717

Or 07867 510544

landscapinglincolnshire@gmail.com

## FLEET FENCING

22 Cottage Lane, Collingham. Nw.

**A PROMPT PERSONAL  
SPECIALISED SERVICE**

FENCING (including repairs)

LANDSCAPING \* PATIOS

AND PATHS

BLOCK PAVING DRIVES

**NO JOB TOO SMALL**

**ALAN LYONS 01636 893092**

**MOBILE 07970 431138**

Email: alan.lyons2@btinternet.com

## WASH MY WHEELIE-BIN

**professional cleaning service  
domestic and commercial**

\*quality service\* \*fair prices\*

\*environmentally friendly\*

We clean and sanitise your bin  
leaving it Hygienic and odour-free

Tel: 01476 240133 / 07909965255

www.washmywheeliebin.co.uk

## Fresh Local Farm Milk

unhomogenised

**Delivered to your door**

on Mondays, Wednesdays &

Fridays in glass bottles

£1.50 per litre bottle

**Produced, Pasteurised and**

**Bottled in Danethorpe**

tel: Robin 07587 140106