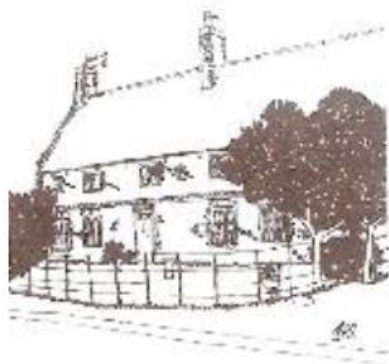


FOCAL  
POINT



## CHIROPLUS CHIROPRACTIC CLINIC

Dr Sarah Beales BSc (Hons)  
Doctor of Chiropractic  
1st Floor, Collingham Medical Centre

Back Pain? Neck Pain?  
Hip Pain? Headaches?

Call us on  
**01636 610242**



## ***Mobile Stylist***

Winthorpe Village



Why not have your hair styled in the comfort of your own home by a professional stylist with 30 years experience

- Colouring
- Perms
- Highlights / Foils
- Cutting and Styling

Contact Diane on 07703523888

Email: [dianepipes71@gmail.com](mailto:dianepipes71@gmail.com)

## Mathematics Tuition

11- plus to A-level

$$\frac{1 + \sqrt{5}}{2}$$

Andrew

[apwm65@gmail.com](mailto:apwm65@gmail.com)

07383015001

DBS Certificate

## Home Tuition in Winthorpe

Experienced teacher,  
private tutor and GCSE examiner

Up to GCSE and A' Level:  
English Language & Literature  
Up to GCSE: French, History, R.E.  
Contact Julie Hill: 01636 676079  
email: [julie@readingrefinery.co.uk](mailto:julie@readingrefinery.co.uk)

DBS Certificate

## *Balderton Dry Cleaners & Launderette*

*We do home deliveries in Winthorpe, Langford and Holme on Tuesdays and Thursdays. You can also drop off via our new agent in Winthorpe - The Lord Nelson.*

*The Launderette* will wash and press bedding, shirts, workwear and football kits  
- all your washing needs!

*The Dry Cleaners* take mens and ladies wear, curtains, duvets, loose covers and wedding gowns.

*Phone for collection 01636 705487*

We've been **Tallented** in law since 1774

Rely on the legal experience of our Tallented lawyers to help you, when you need it most.

- |                    |                                     |
|--------------------|-------------------------------------|
| • Agricultural law | • Family law                        |
| • Children law     | • Inheritance Tax and planning      |
| • Commercial law   | • Litigation and dispute resolution |
| • Criminal law     | • Residential property              |
| • Employment law   | • Wills, trusts and probate         |

Call us now to find out how we can help you.

Newark: 01636 671861

Southwell: 01636 813411

Mansfield: 01623 666700

[www.tallents.co.uk](http://www.tallents.co.uk)

**Tallents  
Solicitors**

E. GILL & SONS<sup>™</sup>  
Funeral Directors

*'Our family caring for your family'*

The Gill family are proud to have provided care and advice  
to families in the Newark and District Area for over 100 years

We offer pre-paid funeral plans

55 Albert Street, Newark NG24 4BQ Telephone: 01636 677461

## *Focal Point*

Advertise  
with your  
local  
magazine

Shop Local

Support a  
local business

Reduce your  
carbon  
footprint

### **Thank you to all our advertisers, new and old**

It's great to have new advertisers on board –  
thank you. And for all our long-standing  
advertisers, a big thank you.

By advertising in Focal Point, and reaching out to  
the local community, you are part of a fantastic  
team of people, who are working for the benefit  
of everyone in Winthorpe, Langford and Holme.  
Without the income generated from your  
adverts, Focal Point could not survive and the  
villagers would lose a valuable resource.

If you are involved in a local business or  
enterprise, please consider placing an advert in  
Focal Point – even if you aren't looking to  
increase your business. Simply look upon it as a  
contribution to your community.

If you value your community, support local  
businesses who advertise in Focal Point. Let's  
help each other.

## NOTES FROM THE EDITOR

The end of October always marks a change in the year – clocks go back from British Summertime to GMT; days begin to shorten at alarming speed; the golden colours of autumn give way to grey, as the leaves fall and trees look bare and stark. And yet there is beauty in every season if we look for it, even if the wind blows cold and rain lashes down, as it has been doing this past week (as I write) along with the occasional spectacular thunderstorm.

I'm spending my weekend in North Norfolk, having a wonderful break by the sea. Even though the weather may be 'unsettled', everyone who was out and about in Sheringham today seemed cheerful and glad to be there. We took a ride on the North Norfolk Steam Railway; we walked along the seafront and ate chips from the paper; we drank coffee in a small café, with steamed up windows, wet coats and a few damp dogs and their owners. The rain was 'persistent' but no one was miserable or complaining. I really love that undaunted spirit and enjoyment of simple pleasures.

I know that there will be events planned between now and Christmas in our three villages. Whilst it may seem a long way off, Focal Point has to adhere to deadlines so that we can get the magazine to the printers and back, then distributed to your door. So, if you would like Focal Point to feature any event that will be happening before December 31<sup>st</sup>, please ensure that you submit your article to the editor by **18<sup>th</sup> November**.

**Change of Deadline for December:** to enable the printers to publish Focal Point before they close for the Christmas holidays, please ensure that all articles etc **for the January edition** are submitted to the editor no later than **12<sup>th</sup> December**.

**Julie Hill (01636 676079)**

**NEXT MONTH'S DEADLINE IS 18<sup>TH</sup> NOVEMBER**

[winthorpefocalpoint@outlook.com](mailto:winthorpefocalpoint@outlook.com)

---

## *November Calendar*

---

When	What	Where
Tue 1st	All Saints' Day	
Fri 4 <sup>th</sup>	Green bin	L'ford/Holme
Sat 5 <sup>th</sup>	Guy Fawkes' Night / Bonfire Night	
Mon 7 <sup>th</sup>	Silver bin	Winthorpe
Wed 9 <sup>th</sup>	Yoga & Mindfulness Class	Winthorpe
Wed 9 <sup>th</sup>	W.I. Meeting	Winthorpe
Fri 11 <sup>th</sup>	Armistice Day	
Fri 11 <sup>th</sup>	Silver bin	L'ford/ Holme
Sat 12 <sup>th</sup>	National Highways community engagement event	Winthorpe
Sun 13 <sup>th</sup>	Remembrance Sunday	
Mon 14 <sup>th</sup>	Green bin	Winthorpe
Mon 14 <sup>th</sup>	Brown bin	All
Mon 14 <sup>th</sup>	Mobile Library	All
Wed 16 <sup>th</sup>	Garden Club Meeting	Winthorpe
Thur 17 <sup>th</sup>	Parish Council Meeting	Winthorpe
Fri 18 <sup>th</sup>	Green bin	L'ford/ Holme
Mon 21 <sup>st</sup>	Silver bin	Winthorpe
Wed 23 <sup>rd</sup>	Think Again community presentation and discussion	Winthorpe
Fri 25 <sup>th</sup>	Silver bin	L'ford/ Holme
Mon 28 <sup>th</sup>	Green bin	Winthorpe
Mon 28 <sup>th</sup>	Brown bin	All



**This month, the mobile library will call at our villages  
on Monday 14<sup>th</sup> November**

Mobile Library Routes and Timetable 2022 for Winthorpe, Langford and Holme*				
Stop No.	Village	Location	Arrive	Depart
1	Winthorpe	The Spinney	9.40am	10.00am
2	Winthorpe	junction of Pocklington Crescent and Branston Close	10.05am	10.25am
3	Winthorpe	junction of Gainsborough Road and Woodlands	10.30am	10.50am
4	Langford	Langford Hall Farm	10.55am	11.10am
5	Holme	Snaefell, Langford Lane	11.20am	11.30am
6	Holme	Southview Farm	11.35am	11.55am

\*Information taken from [inspireculture.org.uk](http://inspireculture.org.uk)

Don't forget to contact the editor about any events or activities happening in Winthorpe, Langford or Holme, so that they can be included in Focal Point.

Email: [winthorpefocalpoint@outlook.com](mailto:winthorpefocalpoint@outlook.com) Tel: 01636 676079

Or use the contact form on the parish website: [www.winthorpe.org.uk](http://www.winthorpe.org.uk)

## Seasonal Flu Vaccination Campaign 2022

We will be holding 2 Saturday morning flu clinics on

**Saturday 24 September 2022, from 8.00 am – 1.00 pm**

**Saturday 15 October 2022, from 8.00 am – 1.00 pm**

We are aiming to vaccinate 100% of eligible patients this year, as defined by NHS guidelines. We may be able to open our offer beyond those eligible after 31 October 2022 (dependent on stocks/uptake).

**Saturday clinics will focus on patients who are able to walk and stand unaided for up to 20 minutes. No seating available. Flu Vaccinations (and possibly COVID vaccines once details are confirmed) will be administered with patients stood up and a strict one-way system through the Practice will be in operation. We will continue to wear face coverings to protect your healthcare setting.**

**For patients with mobility issues we will be holding weekday flu clinics. Our PCAs will triage at the time of booking.**

**Housebound patients will be contacted by the practice in due course.**

These are appointment only clinics. **Appointments will be available to book from 1 September 2022.** Please contact the number below, book online or ask at Reception.

**For Appointments telephone: 01636 892156 8.00am – 6.15pm**

**Website: [www.collinghammedicalcentre.co.uk](http://www.collinghammedicalcentre.co.uk)**

**E-Mail: [collingham.medicalcentre@nhs.net](mailto:collingham.medicalcentre@nhs.net)**



## COLLINGHAM PHARMACY



**YOUR local pharmacy dispensing NHS, Private and Veterinary prescriptions.**

Offering a wide range of medicines, vitamins, toiletries, pet medicines and seasonal gifts.

### NHS Services Include:



**Medicine Use Review**



**Morning After Pill**



**Blood Pressure Measurement**



**Minor Ailments Scheme**

High Street, Collingham, Newark, NG23 7LB

**Tel: 01636 893038**

**email: [collingham.pharmacy@nhs.net](mailto:collingham.pharmacy@nhs.net)**



# Chi Living Yoga & Mindfulness

Brand new 6 week yoga &  
mindfulness course.

Starting  
Wednesday 16th November  
at 7.00pm

Winthorpe Village Hall

You don't need to be flexible

You don't need to be fit

You can be any age, shape, gender  
or background

596chiman@gmail.com

07445 834755







**FREE** TO ATTEND  
REGISTER IN ADVANCE

SCAN ME



[midlandsmachineryshow.com](http://midlandsmachineryshow.com)

**16 & 17  
November 2022**

# Driving efficiency within your business

The Midlands Machinery Show returns with a focus on new innovations to tackle the challenges farming businesses face today

**93%**  
visitor  
satisfaction  
(based on exhibitor quality)



See the latest equipment and technology that will help you increase yield and profitability



Leading brands of agricultural machinery



NR60/ BASIS points available



Watch live machinery demonstrations including clean power technologies



**Newark Showground, Newark-on-Trent,**  
Nottinghamshire, NG24 2NY

@MidsMachinery

@MidlandsMachineryShow

@midlandsmachineryshow

# GIANT SUNFLOWER COMPETITION

Rather later than usual this year (as I just missed the last Focal Point deadline), it's time to announce the winners of the 2022 Winthorpe, Langford & Holme Giant Sunflower Competition!



*Winning sunflower growers from Year 4 and individual winning growers.*

- 1<sup>st</sup> Prize:** Kian-Blake Greaves (3.22m)  
**2<sup>nd</sup> Prize:** Catherine & Merryn Dray (2.82m)  
**3<sup>rd</sup> Prize:** James Fox-Bakin (2.75m)  
**Teacher's Award:** Miss Blake (3.20m)

This year we introduced a new prize for participation: everyone in the year group with the most entries won the coveted prize of being first in for their lunch! Our first winners were **Year 4**, who had the highest percentage per year group submitting an entry.

We hope this extra prize will encourage everyone to 'have a go' and send in their entry, regardless of how tall their sunflower is. Congratulations to all our prize winners – it was lovely to be able to visit the school and present you with your trophies and certificates.

Well done to everyone who entered the competition, and to all the parents, grandparents and carers who no doubt helped our young gardeners.

See you next Spring for the 2023 competition!

**Liz Ferreira**



## Camino de Santiago



Santiago de Compostela is the capital of Galicia, in northwestern Spain. The city has its origin in the shrine of Saint James the Great, now the Cathedral of Santiago de Compostela, as the destination of the Way of St. James, a significant pilgrimage route since the 9th century.



I'm now back home, having completed 100 miles on the Camino of Santiago de Compostela, although a walk of a mere 100 kms is required to qualify for the certificate! There were so many interesting places to see on the route.

What an incredible experience: so many people to meet from around the globe, so much camaraderie and so much walking through all weathers. Evenings were spent chatting and preparing for the next day, before the inevitable meal of either hake, chicken or pork chop. I stayed in hostels along the pilgrims' way, although I confess that I did not stay in the mixed dormitories, as I needed my sleep! The Santiago cake with coffee in the morning certainly helped me along the way – a delicious, moist, almond cake.

The culmination of the pilgrimage was the Pilgrims' Mass at midday in the cathedral at Santiago. This was an incredible and moving experience. Despite



the early start in the dark and rain, it was totally worthwhile. An emotional reunion with many Camino friends followed, as we saw who else had made it. I was particularly fortunate to see the "Botofiero" being swung. It's an enormous incense burner, which requires six priests pulling together on ropes to swing it the length of the church. An audible gasp from the congregation could be heard.

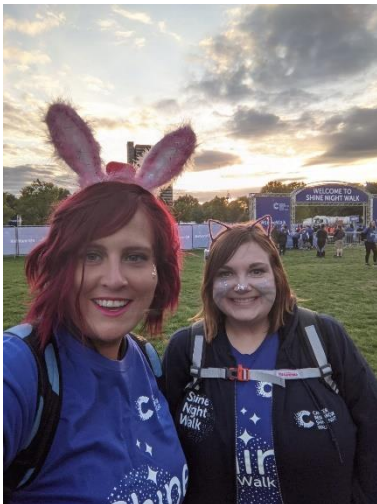
Now that I am back in Winthorpe, I want to thank all those who felt able to give me a donation. I was raising funds for pFic 1, a liver condition suffered by my granddaughter. And there is some good news: the new drug from USA (not NHS funded) has this week been shown to be helping her. Your donations will help further research into children's liver disease and it's still not too late to donate should you feel able. <https://gofund.me/d7dc5fd6> or drop an envelope through the door of 48 Gainsborough Road.

A heartfelt thank you to those of you who have supported me in this cause.

**Elaine Parkin**

For more information about PFIC1:

<https://childliverdisease.org/liver-information/childhood-liver-conditions/progressive-familial-intrahepatic-cholestasis/>



Victoria wishes to thank everyone who supported her 26 mile walk of the London Shine Walk Marathon in aid of Cancer Research. She raised the sum of £285 plus a further £50.00 in Gift Aid donations. £95.00 of this sum came through the generosity of the residents of Winthorpe. She completed the walk in just under 11 hours, averaging just under 3 miles per hour.

Thank you very much for supporting this worthy cause.

**Pauline Lockwood**



**CLIVE SMITH**  
your  
**Local Decorator**  
**Tel. 01636 679904**

**Interior and Exterior  
Painting and Decorating**  
**For quality work, prompt  
Attention and free estimates**

## **PATTERSONS**

*Floorcovering Specialists*

We offer a free no obligation measuring and sample delivery service  
in Newark and the surrounding villages.

60 Cartergate Newark - Notts NG24 1UB - Tel. 01636 703394

Email:- [info@pattersonscarpetltd.co.uk](mailto:info@pattersonscarpetltd.co.uk)

Web:- [www.pattersonscarpetltd.co.uk](http://www.pattersonscarpetltd.co.uk)

Est 1992

### **Town & Country**

Joinery Services

Est 1992

**SERVICING THE WINTHORPE AREA**

We will be happy to take on any of the following work:

- Small jobs around the garden such as:
  - Repairs to fencing
  - Garden gates
  - Re-felting shed roofs
- General joinery & repairs in the home
- Kitchens & internal doors

*Quality work  
always*

For a free estimate call Keith on: *Fully qualified  
1636612000 or 07971325270 & insured*



## **ALL COMFORT LTD.**

*Safety First*

For all your gas and heating needs...

- Hobs & Heaters -
- Landlord Certificates -
- Boiler & Radiator Servicing & Repairs -



No job is TOO SMALL, just give us a ring for a PROMPT, RELIABLE service

CONTACT EDDY:



Mobile: 07948621349

Email: [info@allcomfort.uk](mailto:info@allcomfort.uk)

Telephone: 01636361359

Gas Reg No: 618344



# WINTHORPE WI

## JERSEY BOYS

On 22<sup>nd</sup> September several members donned their glad rags and headed for Nottingham to re-live their youth, by watching the stage version of *Jersey Boys*. The show was preceded by a very enjoyable lunch at Bistrot Pierre. A huge thank you to our President/Secretary for organising this.

## BOOK CLUB

Eight members of the WI Book Club met at the Lord Nelson to review *Ruin Beach* by Kate Rhodes – and to partake of coffee and cake. Although everyone enjoyed reading the book, one or two members thought that the first couple of chapters were a bit off putting.

At the meeting, one of our members revealed that she and a friend had made a last minute decision to travel to London for the lying in state of the Queen; she gave us an interesting account of her experience.

The next Book Club meeting will be held at the Lord Nelson on 3rd November when we will be reviewing *The Survivors* by Jane Harper. All WI members are welcome to join us.

## MEETING 12<sup>th</sup> OCTOBER

The above meeting was well attended and three birthdays were celebrated. The meeting took the form of a Blue Peter moment when, armed with scissors, rulers, glue, template and various scraps of this and that, we were instructed to make a little memory book, without the aid of a single toilet roll cardboard inner or sticky backed plastic film! Something to practise with the grandchildren, I think.

Our next meeting will be held on 9<sup>th</sup> November at 7.30pm, when the subject will be **GIN** (I thought that would get your attention). So, ladies, if you like gin and fancy coming to a gin tasting evening, please join us. First visits are free (including this gin tasting); subsequent visits incur a £5.00 charge.

PS: I don't like gin myself, so whoever sits next to me can drink mine as well.

**Pauline Lockwood**

## Winthorpe Community Centre

100 100 100 100 100 100 100 100 100 100

Winners for October		
1st	£44.40	Frances Kelly
2nd	£22.20	J. Young
3rd	£7.40	Thomas Smart

100  
Club



### NEWARK FOODBANK

Since the last edition of Focal Point, I have been able to make another delivery to the Foodbank, which weighed in at 50.1kg. Thank you very much to everyone who has contributed from Winthorpe, Holme and Langford. With your increased giving, you are making a real difference in these especially hard times.

Especially needed now are: long life milk, tinned vegetables, tinned meat, sugar, pasta sauce, tinned fruit, tinned or microwaveable sponge puddings, tea bags, washing up liquid.

Always needed are: toiletries (both men's and women's), biscuits, toilet rolls, breakfast cereals, jam, long life fruit juice.

Winthorpe Collection Points:

- The shop at the Lord Nelson, during shop hours
- The swing bin at 11 Gainsborough Road, available 24/7.
- The church porch, Sun 10am-12noon, Thurs 1.30-3.30pm

**The bank details for the Foodbank are:**

NatWest; sort code 54-10-23; a/c no. 19405812

**Jane White**



## Winthorpe Garden Club

It was with sadness that we learned of the death of two former members: Margaret Bark and Harold Pacey. Both were stalwart supporters of our club. On a happier note we welcomed new members, Les and Maureen.

This month's talk was: "Breeding and Growing Harvington Hellebores." Our speaker, Penny Dawson, told us a little of the background of the nursery, and the origin of the names Harrington and Twelve Nuns. Her parents, Hugh and Liz Nunn, had a specialist wholesale nursery in Harrington village, near Evesham. Penny developed the business under the name of Twelve Nuns, after settling near Bourne in Lincolnshire. Combining her maiden name (Nunn) with her maternal family name (Twelves) neatly provided the name for her new enterprise.

For over thirty years, Penny's father had been selecting and breeding hellebores, which she continued. All were grown from seed, collected from 'mother' plants, whose characteristics were known. Netting is used to exclude bees and other pollinating insects, so that cross pollination is avoided. Instead, pollination is done in a labour intensive way, using a small brush to transfer pollen from one flower to another. There can be a hundred seeds in a single flower head; these are collected when ripe and sown into a small cellular system before growing on. The determining factor in breeding these plants is that the resulting flowers must be consistently true and clear in colour. We learned that it can take many years of selection and breeding to produce a new, named variety before its release to the public.

Penny also showed examples of their trilliums, erythroniums, roscoes; many unusual varieties are available online, as the nursery is not open to the public. Some of us came away with new plants from the range on offer.

Our next meeting is on November 16<sup>th</sup>, when our old friend STEVEN LOVELL will give a talk entitled EXTRAMADURA . Steven's talks are always extremely informative, humorous and illustrated with impressive photographs. I hope to see you there.

**Ian Wilson**

## Winthorpe and Langford Parish Council

At this month's Parish Council meeting, which took place on 20<sup>th</sup> October, we were joined by two residents, who asked questions and stayed to hear the business of the meeting. We also welcomed Kyle Kenner to his first meeting as internal auditor. As this was also a Finance meeting, we discussed the current financial position of the Parish Council. We also agreed a revised set of Standing Orders and Code of Conduct for Parish Councillors, and to join NALC (National Association of Local Councils), which will provide us with access to support information and legal advice.

There was a general discussion about repair and maintenance work needed in the Parish over the next three years; we agreed to meet, to develop a prioritised list of what needs doing. All residents can feed into this discussion, so please let me have any ideas by contacting me: [paul@bridgfordss.co.uk](mailto:paul@bridgfordss.co.uk)

We have chosen a new Web developer, who will be working with us over the next few months to deliver a new improved Village Website. So, watch this space but please let me know if you have any comments or ideas.

We have met with the CEO of Newark Showground to discuss issues relevant to the showground and parish. These include points related to the A46 development, traffic issues and active travel etc. We agreed to meet every two months in the future to ensure we are on top of developments.

You may have noticed that the alleyway from Gainsborough Road has been cleared and broken fencing wire removed. As you are reading this, the existing and redundant concrete fence posts should also have been removed.

We are currently developing ideas to improve the look of the Village Green, so expect improvement work to be undertaken there over the next few months. If you have any contributions or ideas, please let me know.

Thank you to several residents, who have reported broken fencing stakes along part of Jubilee Walk. Work is underway to replace these and should be completed shortly.

There are two applications for work on trees, both of which we deferred to N&SDC for decision. Owners of The Cottage, Gainsborough Road, applied for the construction of a double wooden garage, to which the Council had no

objection. Finally, you may have noticed the construction of stables and store rooms on Holme Lane, towards the railway line. This is subject to an application made just over four years ago, approved at the time, and work is currently being completed. However, the Parish Council raised concerns over the suitability of the construction of the new access to the site from Holme Lane. This is currently being investigated by N&SDC Enforcement Officer.

## **The Queen Elizabeth Memorial Gardens**

To commemorate the life of The Queen we are currently looking at options available which will have a lasting impact in the Parish. For some time, we have needed to improve the banked area adjacent to Jubilee Walk from The Community Centre down to the Fleet. This area has been cleared recently but if left will revert to a wilderness of nettles and briar again. It is still early days, but we are considering re-developing part of this area with planting to prevent weed growth, a short new path and possibly a wild flower area.

We are currently talking to Parish groups and organisations about getting involved in the work needed; we will of course be asking for volunteers from across the Parish to help with the work.

We hope that if we can carry out this work together it will provide a lasting legacy for future generations of residents to enjoy. As I've mentioned, this idea is still in the early stages, so we are open to thoughts of how this area could be transformed, so please contact me at [paul@bridgfordss.co.uk](mailto:paul@bridgfordss.co.uk) if you want to get involved or if you have any good ideas.

## **Let's have a chat about Winthorpe's History and Heritage**

Now that the heritage trails leaflet has been published, it's exciting to think that local interest in the history of Winthorpe is having a revival. If you are interested in sitting down for a chat about the history of our village – even if you approach the conversation with no pre-existing knowledge of the area – we'd love to hear from you.

This is not a local history group: it's an informal gathering of like-minded people, interested in Winthorpe's past and the heritage of the village.

For more information, please contact Christine Hasman on 01636 679105 or email [christine@easttrentgenealogy.co.uk](mailto:christine@easttrentgenealogy.co.uk)

## **Winthorpe with Langford Neighbourhood Plan – Progress Update**

At the last meeting of the Working Group, which took place on 4<sup>th</sup> October, we discussed progress of the plan thus far. As we are now beginning to make real progress, Open Plan (our consultant support for delivering the plan) suggested a meeting to focus on the current content of the draft plan. To this end, an additional Working Group meeting took place on 19<sup>th</sup> October.

We are working with another consultant (AECOM) at the moment, to identify building designs and styles of property across the Parish. This work (Design Codes) will feed into the Plan and help us to ensure that the current style and identity of the Parish is maintained in the future. We have talked through and agreed with Open Plan a programme of delivery and completion of the plan which will be as follows:

- Dec 2022 Completed version of the Design Codes
- Dec 2022 Draft version of the plan complete
- End of 2022 Final version of Plan content is complete and agreed by the Working Group
- Jan/Feb 2023 Finished version produced and delivered to N&SDC
- Mar/Apr 2023 Resident Referendum held within the Parish
- Spring 2023 10-year Plan published and in place. Note: A review will be undertaken in 2028 to ensure that we are on target for delivery and to provide an opportunity for minor amendments.

We agreed that, in addition to maps and diagrams to support the content, we should also have good quality professional photographs taken of various elements of the Parish, which we can use for the plan, as well as for other purposes, such as The Village Website, Parish Twitter site etc. A local photographer has been contacted and briefed. An outline list of potential sites has been discussed and provided. So, you may well see somebody taking photos around the Parish. Some suggested sites are houses within the villages so it's possible that you could be contacted to see if you are happy for this to take place.

The Conservation and Built Heritage Working Group are currently also looking at Non-Designated Heritage Assets in the Parish. But what are they?

## **What are Non-Designated Heritage Assets?**

*These are: buildings, monuments, sites, places, areas or landscapes identified as having a degree of significance, meriting consideration in planning decisions because of their heritage interest.*

Having spoken to a few people recently, we thought it would be useful for people living in Winthorpe to know which these properties are:

THE ALMSHOUSES AT WINTHORPE

THE OLD RECTORY

1 GAINSBOROUGH ROAD

FLEET COTTAGE AND APPLE TREE COTTAGE

THE COTTAGE

THE GROVE HOUSE

WHEATLEY HOUSE

MILL CLOSE AND WYNWAYS

4 AND 5 THE DRIVE

THE VILLAGE HALL

THE LAURELS AND ROSLYN

DOLLS COTTAGE

DOUGALLEN AND HILLSIDE

43 GAINSBOROUGH ROAD

PARK LAND AT WINTHORPE HALL

THE SMITHY

THE BLEACHING HOUSE

THE OLD WINDMILL

RAF WINTHORPE

THE OLD SHEEPWASH

Next month we will look at NDHA's in Langford and also the listed properties across the Parish. If anybody would like any further information on designated (listed) and non-designated properties please contact me at:

[paul@bridgfordss.co.uk](mailto:paul@bridgfordss.co.uk)



## **THINK AGAIN**

### ***The Winthorpe Residents' A46 Consultation Group***

The Think Again committee has been busy: we met with National Highways, who advised us that the statutory consultation for the A46 will run from **Wednesday 26<sup>th</sup> October until Monday 12<sup>th</sup> December**. We expect the consultation to be live on their website from 26<sup>th</sup> October; residents will also receive an information pack in the post.

National Highways confirmed that they would host a community engagement event at the Community Centre on **Saturday 12<sup>th</sup> November**. In addition, Think Again will be hosting two presentations / discussion sessions at the Community Centre. These will take place on **Wednesday 23<sup>rd</sup> November**; the first session is at 1.30pm and the second session is at 7pm.

We also met Robert Jenrick MP and, although we are pleased with the revisions to the design, we outlined four areas of concern. These issues will no doubt formulate part of our official response to the consultation:

1. The expansion of the Winthorpe (showground) roundabout. With the merge and splitter lanes, this will constitute up to 10 lanes, so it is a significant infrastructure, and we need to learn more about how it will impact people living in that area / impact on habitat etc.
2. Intensification of roads in the vicinity of the A1/dog kennels. Although this alleviates the need for the three stacked road underpass, it has meant a flattening out of more road, which will broadly stretch from the new A46 (which has come closer to Winthorpe at this point) to the A1, with the addition of a new roundabout called Brownhills Junction. This junction/roundabout will carry all traffic exiting the A46 northbound, travelling onto either the A1, A17 or into Newark, as well as offering local access to the dog kennels.

3. Concerns about an NIA (Noise Important Area) already in existence in this area and the impact on noise for those living in the south part of Winthorpe.
4. Lack of clarity regarding how the issue of show day traffic is being addressed. Whilst it's clear that this is now on National Highways' radar, the solution to how this will work is less transparent.

Although the map showing the latest changes has been published on National Highways' website, it is not easy to download. An easier version is available. We have reported issues in downloading the map to National Highways and they have assured us that they are working on it.

The Environment Scoping Report has also been published and is available here: <https://infrastructure.planninginspectorate.gov.uk/projects/east-midlands/a46-newark-bypass/?ipcsection=docs>

We are still in need of volunteers, especially to look at the environment profile of the scheme, and to aid with social media engagement (though all volunteers – whatever your skills set – are welcome). If you feel you cannot commit indefinitely, we welcome volunteers who could join us for the short period of the consultation only – i.e. from now until mid-December – as this is going to be an exceptionally busy time for Think Again. If you can spare some time to help, please get in touch. We would really appreciate it.

For up-to-date news on Think Again's campaign, upcoming events and key dates, please join our mailing list (details below).

The dedicated Think Again web site is available as a single point of information and communication for the village. It can be found by following the link: <https://a46thinkagain.org.uk>

[A46WinthorpeVillage@outlook.com](mailto:A46WinthorpeVillage@outlook.com)

Facebook page: <https://www.facebook.com/ThinkAgainA46Newark>

Twitter: <https://twitter.com/ThinkAgainA46>







## **RSPB Langford Lowfields**

### **“Breeding Bittern Bonanza!”**

2022 has been a historic year for us... for the first time ever, two bittern nests were found on site! Bitterns have nested on site for the past couple of years, but this is the first time that we've had two nests running simultaneously, it represents the next important step in our journey to becoming a bittern-filled, reedbed paradise. The nests were close together, probably indicating that although we had two males on site, both females probably chose to mate with the same male. Clearly his powerful Barry White style booming was more alluring. No youngsters (bitterlings??) have been seen, but the fact that the site now has the habitat and presumably the food resources to support two nesting females is excellent confirmation that we're heading in the right direction. Fish numbers continue to increase, more amphibian ponds are being dug this year to provide additional feeding opportunities and reed planting continues on Phase 3, expanding the priority reedbed habitat, with 12000 seedlings planted out so far this year.

The habitats at Langford have been designed and are managed with bitterns in mind, lots of reed edge for feeding and larger blocks for nesting, open channels and pools, willows are controlled to prevent them taking over, water is managed to mimic natural seasonal fluctuations, new feeding ponds are being dug, water lilies are being planted to provide more cover for small fish... these bitterns are demanding creatures! Reed cover will continue to increase over the years, as will the size of the fish population and so bittern numbers should only increase. Do not fear though, as the reedbed expands, key niches will still be maintained within and around it for the benefit of other species; wintering wildfowl, waders (lots follow the Trent during their annual migration) and various heron species which enjoy sauntering through the knee-deep shallower waters. Located inland, well away from the coast, Langford represents a key and expanding site for a host of reedbed species, a haven safe from the threatened sea level rise, which looks likely to impact on reedbeds located on the east coast.

**Joe Harris** (site manager)



# NEWARK MEMORY CAFE



REFRESHMENTS

SUITABLE ACTIVITIES

SAFE PLACE TO BE

CHAT WITH EXPERIENCED VOLUNTEERS

EVERY TUESDAY 2PM -4PM

TEL: 07949119636

ADDRESS: BRIDGE COMMUNITY CENTRE, LINCOLN  
ROAD, NEWARK, NG24 2DQ

A PLACE FOR THOSE SUFFERING  
WITH DEMENTIA OR MEMORY LOSS  
AND THOSE CARING FOR THEM



## **Winthorpe Post Office and Stores**

### **Early 1960s – 1975**

By the early 1960s, it was clear that the business had outgrown the existing shed premises. A new shop was therefore built, this time attached to the house with more shelves and with food counters too. It came to be another 'open all hours', as the shop was opened when the mail arrived and closed at 7.00pm – though being closed was a loosely held concept for some, for whom coming to the back door for something they'd forgotten and couldn't do without was a regular practice. My mother ended her own business and started to work full-time in the shop, including taking on the role of 'postmistress'.

When my father started the newspaper side of the business (all done before he went to his other work) he bought from W H Smith Wholesalers a bike with a large basket on the front. He told no one it was coming; it arrived on a lorry, partly wrapped in cardboard. In his mind, someone else (he hated cycling) would ride it to deliver papers and other stuff. But it was a big beast, with no gears, and would have caused the likes of Arnold Schwarzenegger to shrink back! Ironically, it was my father who ended up riding it every Saturday and Sunday, when he took to delivering the papers himself.

The new purpose-built shop was much more secure – though we were burgled one night and the shop was ransacked, presumably in the search for cash (which was all locked away in a safe). The odd thing is that we had a dog then, and she slept through it all and never made a sound. The police thought that very funny. We didn't see the joke!

My grandmother was at heart a naturally gregarious person who loved people and, as a cure for her depression and anxiety, having the shop worked. There is no doubt that it was hard work and a full-on affair. We all 'mucked in' and did what needed to be done. I remember that, though there were times of stress and angst, there was also a lot of laughter.

By the early 1970s, my grandmother was older and wanting to slow down. My father had a new role in his day job and was also Parish Clerk and a Churchwarden. My mother's rheumatoid arthritis was getting worse. They

decided that this was the right time to sell up. But first, they partitioned the land and had a bungalow built on what had been the quite extensive garden, where they lived, and in which my wife and I are living today. They sold the business and the property in 1975. Looking back, I believe that they were always pleased with the service they gave to Winthorpe village.

**David White**

### **Lest We Forget**

“They shall grow not old, as we that are left grow old:  
Age shall not weary them, nor the years condemn.  
At the going down of the sun and in the morning  
We will remember them.”

Private Arthur Cecil Richmond, 1st/7th Bn. Sherwood Foresters  
died 1<sup>st</sup> July 1916, aged 25, and is commemorated on the Thiepval Memorial

Herbert Charles Key, Lance-Corporal, 8<sup>th</sup> Sherwood Foresters  
Killed in action 12<sup>th</sup> September 1917, aged 22 years

Arthur Dean, Lance-Corporal, 8th Sherwood Foresters.  
Died of wounds 9<sup>th</sup> December 1917, aged 22 years

John Edward Walker, Lance-Sergeant 1<sup>st</sup> Lincolnshire Regiment  
Killed in action October 4<sup>th</sup> 1917, aged 33 years

And for all those who have given their lives in war so that we might have the freedom and rights we have today. We will remember them all.

“If I should die, think only this of me:  
That there's some corner of a foreign field  
That is for ever England. There shall be  
In that rich earth a richer dust concealed;  
A dust whom England bore, shaped, made aware,  
Gave, once, her flowers to love, her ways to roam,  
A body of England's, breathing English air,  
Washed by the rivers, blest by suns of home.”



# THE LORD NELSON

*at Winthorpe*

Call: 01636 707705

Find Us on Facebook or Instagram : The Lord Nelson at Winthorpe

**Village Lunch:** Monday 7<sup>th</sup> November: Two courses for £13.00  
Pop in or call the pub for menu options

**Quiz Night:** Monday 14<sup>th</sup> November: £1.00 per person entry fee  
Booking essential. Why not add dinner for £8.00?

**Steak Night:** Every Wednesday  
Any 2 rump steaks and a bottle of house wine for £39.00  
Chicken, Vegetarian and Fish options available

**Open Mic Night:** Monday 21<sup>st</sup> November  
Fancy yourself as the next Harry Styles or Becky Hill?  
Why not come down and join in?

**Christmas Market:** Saturday 3<sup>rd</sup> December  
Stall holders – call us for details and to book your stall  
£20 per stall for the day

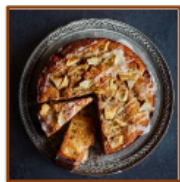
**Looking for a venue for your Christmas Party?**  
**Don't Delay – Book Today!**

Don't forget that we still have the onsite shop, newspapers  
and Fish and Chip Takeaway  
Post Office every Thursday from 9am until 12 noon

Thanks from Emma and the Team

## Recipe for **November**

*A delicious gluten-free cake – perfect for enjoying while watching fireworks, warming by a bonfire, cosying up by the fireside or just because....*



### **Gluten-free sticky pear, date & ginger cake**

*Prep: 20 minutes, plus cooling      Cook: 1 hour 15 minutes      Serves: 10*

#### **Ingredients**

175g unsalted butter, softened, plus extra for greasing  
9 Medjool dates, pitted and roughly chopped  
3 balls stem ginger, roughly chopped, plus  
1 tbsp stem ginger syrup  
4 tbsp maple syrup  
3 large eggs  
200g ground almonds

75g rice flour  
1 tsp gluten-free baking powder  
1 tsp ground ginger  
Pinch of salt  
2 conference pears, peeled, cored and cut into 2cm chunks  
3 tbsp icing sugar

#### **Method**

1. Preheat the oven to 170°C, 150°C fan, 325°F or gas mark 3. Lightly grease a 20cm round loose-bottomed cake tin and line the base and sides with baking parchment. Put the butter, dates, stem ginger and maple syrup in a food processor and whizz until smooth. Whizz in the eggs, one at a time.
2. Add the almonds, rice flour, baking powder, ground ginger and salt to the food processor and whizz until just combined. Stir through all but a handful of the chopped pears, then tip into the cake tin. Scatter with the remaining pears and bake for 1 hour to 1 hour 15 minutes until golden, risen and a skewer inserted into the centre comes out clean. Leave to cool completely in the tin.
3. Remove the cake from the tin. Mix the icing sugar, stem ginger syrup and enough water (roughly ¼ tsp) to create a smooth, glossy icing. Drizzle over the top of the cake, allow to set for 5 minutes, then slice to serve.

**Tip:** *You can make this cake without stirring the pears through or topping with icing and, instead, serving it warm with poached pears and ice cream.*

**Jane Confrey**

### **What's Your Traditional Food for Bonfire Night?**

Hot Dogs and Burgers with fried onions, mustard or ketchup

Jacket potatoes, chestnuts – cooked in the bottom of the bonfire\*

Ginger parkin, toffee apples, bonfire toffee\*

- [Sugar and fire warnings apply in 2022 which did not exist in 20<sup>th</sup> century and earlier](#)



**Slimming World with Katie Joynes**  
Enjoy the Freedom of Losing Weight  
while Eating the Food You Love!

Groups Available: Thursday Morning: Newark @ 9am,  
Thursday Evening: Fernwood @ 4pm & 5.30pm,  
Friday Morning: Balderton @ 8am & 9.30am  
Saturday Morning: Coddington @ 7am, 8.30am & 10am  
For more information please contact Katie – 07539 849 670



[www.northcliftonschoo.co.uk](http://www.northcliftonschoo.co.uk)

3YRS - 11YRS  
TEACHER-LED EARLY  
YEARS UNIT  
OUTDOOR CLASSROOM  
TUXFORD ACADEMY  
FEEDER SCHOOL  
OFSTED RATED GOOD  
PRE & POST SCHOOL  
WRAP AROUND CARE  
RURAL LOCATION

@northcliftonprimary



## GEOMETREE MATHEMATICS

Private maths tuition available from local tutor:

Functional Skills	£25 per hour
GCSE	£30 per hour
GCSE to A-Level Bridging Course	£30 per hour
A-Level	£40



**First lesson free.**

Single topics to full course available

Hi, My name is Paul and I am a recently retired maths teacher. Do you need to catch up after poor teaching in lockdown, especially if you have just started A-Level?

For Further details contact Paul (DBS checked), references available:  
07789175957 [Pauldewison771@gmail.com](mailto:Pauldewison771@gmail.com)

## FOCAL POINT ONLINE EDITION

The online edition of the magazine is easy to find on Winthorpe village website: [www.winthorpe.org](http://www.winthorpe.org)

Just follow the menus: Media and then Village Magazine.

As well as the current issue, you can read previous issues, going back as far as 2007!





# NOVEMBER'S REFLECTIONS



Dear Friends,

How are you? It's been a tough and testing couple of years hasn't it? What with Covid, various other diseases and ailments, the invasion of Ukraine, worry about the cost of living, and the death of Queen Elizabeth coming just three months after her diamond jubilee and a year after her husband's death... we might be forgiven for wondering what's going to happen next. I for one could do with a breather and an uneventful month or two!

Seriously though, life takes its toll on us doesn't it? And we shouldn't underestimate the impact on our minds and bodies. We may well feel that we can't do everything we used to do or want to do now. We may feel that we can't join in activities in the same way, so we can't join in at all.

Well, I can't talk about many things, but I can talk about church and I know that coming to church can be a challenge, when our minds and bodies don't always behave in the way we want them to. I know that church is full of tradition and ritual, and that we like things done the way they've always been done, but I want to reassure everyone that these traditions aren't rules that we've got to obey.

After all, I was taught to always kneel down to say my prayers and I guess everyone who is older than me was taught the same, but we don't kneel down in church anymore and that's OK. God doesn't mind! Traditionally, we spend a lot of time standing through church services, but if you want or need to sit down through all of it, that's OK. God doesn't mind! If you want to bring a cushion and a blanket for comfort, that's OK! God doesn't mind. Traditionally, when we receive communion, we go to the altar rail or the chancel steps, but if you want or need someone to bring you the bread and wine where you're sitting, that's OK! God doesn't mind.

It is important and good for us to be together whenever we can. That's good for body and soul. We have special services this month, with All Saints' Day, Remembrance Sunday and Advent Sunday, and we don't want anyone to miss out.

If you'd like to talk about any of this, please get in touch.  
Have a good November. I look forward to seeing you.

God bless you,

**Revd. Mandy**

01636 361657

[revdmand@hotmail.com](mailto:revdmand@hotmail.com)



### **All Saints' Church, Winthorpe**

The church of All Saints was rebuilt in 1886-8 in place of the old building, which had fallen into disrepair. The foundation stone was laid on All Saints Day 1886 by Sir Henry Bromley of Stoke Hall. The new church was paid for solely by the rector at the time, the Revd Edward Handley. There are a few remnants of the previous church remaining, i.e. in the churchyard, an oval stone plaque and pinnacle; inside the church, a ceiling boss, a door lock & key, several monuments, royal arms and three of the six bells.

Wimuntorp' is included in Domesday Book but without mention of any church. A church was certainly established by the mid-12th century, since sometime before 1166 the church of Winthorpe was granted by Walter de Mandeville as part of the initial endowment for the establishment of an Augustinian Priory at Elsham in Lincolnshire.

On 21 April 1283 there is a record of one Richard de Thistletone, priest, being instituted to the church by presentation of the Elsham Priory; in 1283 there was a testimonial as to his good character as dean of Newark. In 1291 the church was valued at £10 for the ecclesiastical tax of Pope Nicholas IV, where it was also recorded that the church paid an annual pension of 6s. to Elsham Priory. Following a dispute in May 1302, on 29 January 1303 the archbishop was advised that Elsham Priory had recovered the presentation of **the church of St Saviour – to whom the church of Winthorpe was dedicated in this period** – against the crown in a legal challenge.



## All Saints' Church, Winthorpe

Last month we held a fun Harvest Supper with great food and another hard Pat Finn quiz, 'washed down' with much conversation. Our Harvest Festival followed the next day, where the church looked beautiful in all the autumnal colours, worked on by our wonderful band of Flower Ladies. The numerous Harvest gifts were later taken to the Women's Refuge in Newark.

Sadly, I need to report the loss of another member of our regular congregation – Margaret Bark had been for the last few years living in a Care home in Newark but, when in Winthorpe, attended church regularly. We will miss her friendly smile and ask that you remember her family and friends in your prayers.

We look forward to welcoming many of you to our Remembrance Service on Sunday November 13<sup>th</sup> at 10.15a.m. in church.

So much to look forward to and, as we move towards December, there will be the Special Services; these include a Christingle Service, a Carol Service and the usual Christmas Eve Communion Service in church. We do hope that many parents will bring their children to the Christingle on December 4<sup>th</sup> at 3pm, to enjoy the special atmosphere which is created by the candles in the Christingles.

We are very much thinking in our prayers of anyone in the village who is ill or hospitalised at this time.

**Tish Applewhite** Churchwarden (643763)

Church Cleaners Mrs J Lord and Mrs C Hasman  
Brasses Miss T Applewhite



## St. Giles Church, Holme

Hello from St Giles Church Holme

The Harvest Festival was really well supported, especially by people, including children from Holme village. The church was decorated with sheaves of corn, apples, onions, marrows, chillies and a large bread loaf in the shape a sheaf was laid in front of the altar cross. After the service everyone enjoyed a glass of sparkling wine and light refreshments whilst catching up socially.

On Tuesday 18<sup>th</sup> October the funeral and burial of Holme resident, David Sheppard took place at the church. The church was full with even the seats in the Barton Chapel being used. At the back of the church there was standing room only with an impressive line-up of several of Dave's carers all in uniform standing just inside the door. The service was taken by Jessica Pacey, who is related to the deceased and lives just over the river in North Muskham. One of Dave's sons, Robert Sheppard, gave the tribute which mentioned Dave being one the last school children from Holme to cross the river each day in a boat to attend the primary school at North Muskham. When one of the Hallam twins fell in, that then ended and they then went to school in Collingham. The Sheppard family have farmed in Holme for a few generations and his funeral was attended by the many local farmers, friends and families that he knew over his long life of 91 years. He was laid to rest alongside the Sheppard family graves to the north of the church.

Please take care when visiting the churchyard; we are having problems with the moles who seem intent on throwing up mole hills everywhere at the moment. They must be compensating for the long summer period during the drought when we hoped they had disappeared for ever!

Kind regards, Nigel Priestley and Doreen Hallam.

Phone, 01636 892020, email: [nigel.priestley10@gmail.com](mailto:nigel.priestley10@gmail.com)

# St Bartholomew's Church, Langford



Our next church cleaning and light gardening event will be on **Saturday 19<sup>th</sup> November 2-4pm**. This will be our last gardening event for the year. Community gardening and church cleaning provides our Langford community the opportunity to get involved in a range of small jobs, with conversation and refreshments.

The next service will be at **9am on Sunday 20<sup>th</sup> November**. St Bartholomew's church is open most days between 10 and 4pm – all are welcome to look around, take time for reflection and sign the visitors' book.



St Bartholomew's provided space for quiet reflection during our period of national mourning. Thanks to Sandy, the church was beautifully decorated to give thanks for the life and service of Her Majesty Queen Elizabeth II. Our neighbours at Tigh Abaid added to the display of pictures with lovely colourings of Paddington and the Queen.

Our church provided the venue to say goodbye to a resident of Langford. The funeral of Guy Mansell, a regular helper at our gardening events, welcomed his family and friends resulting in a church full for the first time in a while. Guy had travelled the world in his work in media and as a travel writer, and his final adventures were in Langford where he lived next door to daughter Charlotte and family.

Our Christmas Carol service will be **on Sunday 11<sup>th</sup> December at 3.30pm**, followed by mulled wine and mince pies.

Fundraising ideas for next year include a small flower festival and summer fayre. Thoughts for other fundraising activities very welcome to our church warden: Jeremy Steel 01636 893 143.

**John and Becky Whittaker** Langford Crossing (0775 311 7530)

## Church Services for November 2022



**Sunday 6<sup>th</sup>**  
(3<sup>rd</sup> before Advent)

9.00 am

Holy Communion

Holme

**Sunday 13<sup>th</sup>**  
(Remembrance  
Sunday)

10.15a.m.

Remembrance  
Service

Winthorpe

**Sunday 20<sup>th</sup>**  
(Christ the King))

9.00a.m.  
10.15a.m.

Holy Communion  
Morning Worship

Langford  
Winthorpe

**Sunday 27<sup>th</sup>**  
(1<sup>st</sup> of Advent)

5.00p.m.

Evening Prayer

Winthorpe

**Every Thursday**

1.30 – 3.30p.m. Open Church

Winthorpe

**Every day**

10.00 – 4p.m. Open Church

Holme

For more information please visit the East Trent Churches website:  
[www.easttrentchurches.org.uk](http://www.easttrentchurches.org.uk)



# EDLINROOFING

**FREE  
Quotes**

We provide a wide range of roofing services, be it fixing a leaking roof, chimney repairs or fascias and soffits.

No job is too small, from a roof repair to a new roof.

Fibreglass roofing with 25 year Manufactures Guarantee

We can provide a **FREE** quote for roofing in Newark and surrounding areas.

NEWARK, NOTTINGHAMSHIRE

Telephone: **01636 674 884** Mobile: **07983 604 893**

E-mail: [richardedlinproperty@yahoo.co.uk](mailto:richardedlinproperty@yahoo.co.uk)  
[www.edlinroofingnewark.co.uk](http://www.edlinroofingnewark.co.uk)



## FULLERS LANDSCAPING

GARDEN DESIGN &  
LANDSCAPING

Contact Ed on 01522 868717  
Or 07867 510544

[landscapinglincolnshire@gmail.com](mailto:landscapinglincolnshire@gmail.com)

## FLEET FENCING

22 Cottage Lane, Collingham. Nw.  
**A PROMPT PERSONAL  
SPECIALISED SERVICE**

FENCING (including repairs)  
LANDSCAPING \* PATIOS  
AND PATHS  
BLOCK PAVING DRIVES

**NO JOB TOO SMALL**

**ALAN LYONS 01636 893092**  
**MOBILE 07970 431138**

Email: [alan.lyons2@btinternet.com](mailto:alan.lyons2@btinternet.com)

## WASH MY WHEELIE-BIN

**professional cleaning service  
domestic and commercial**

\*quality service\* \*fair prices\*

\*environmentally friendly\*

We clean and sanitise your bin  
leaving it Hygienic and odour-free

Tel: 01476 240133 / 07909965255

[www.washmywheeliebin.co.uk](http://www.washmywheeliebin.co.uk)

**Fresh Local Farm Milk**  
unhomogenised  
**Delivered to your door**  
on Mondays, Wednesdays &  
Fridays in glass bottles  
£1.50 per litre bottle  
**Produced, Pasteurised and  
Bottled in Danethorpe**  
tel: Robin 07587 140106