



National Highways Statutory
Consultation for the A46.

Feedback to Winthorpe
residents.

23rd November 2022



Who are Think Again?

- This group arose out of the plans released by Highways England in Dec 2020.
- We are operating in our capacity as **concerned Winthorpe residents**.
- **We are supported by the Winthorpe Parish Council**, two members sit in both groups.
- If you would like to be part of this action group **WE ARE ACTIVELY ENCOURAGING** residents to step forward.



Sarah-Jane Page

Lowwood



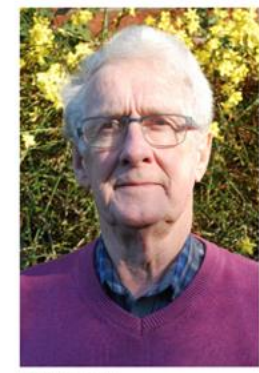
Christopher Neal

Lowwood



Mark Kneen

Woodlands



Martin Shapley

Gainsborough Road (Top)



Louise Blyth

Lowwood



Andy Leary

Hargon Lane



Susie Conning

The Lord Nelson



Dec '20 :
Non- statutory
consultation begins.

**TWO ROUTE OPTIONS
PRESENTED.**

THINK AGAIN FORMED

Jan '21:
OPTION 3 DEVELOPED
& presented to
stakeholders.

Feb '21:
Non statutory
consultation closes.
April 21:
Finalised Option 3
presented to National
Highways

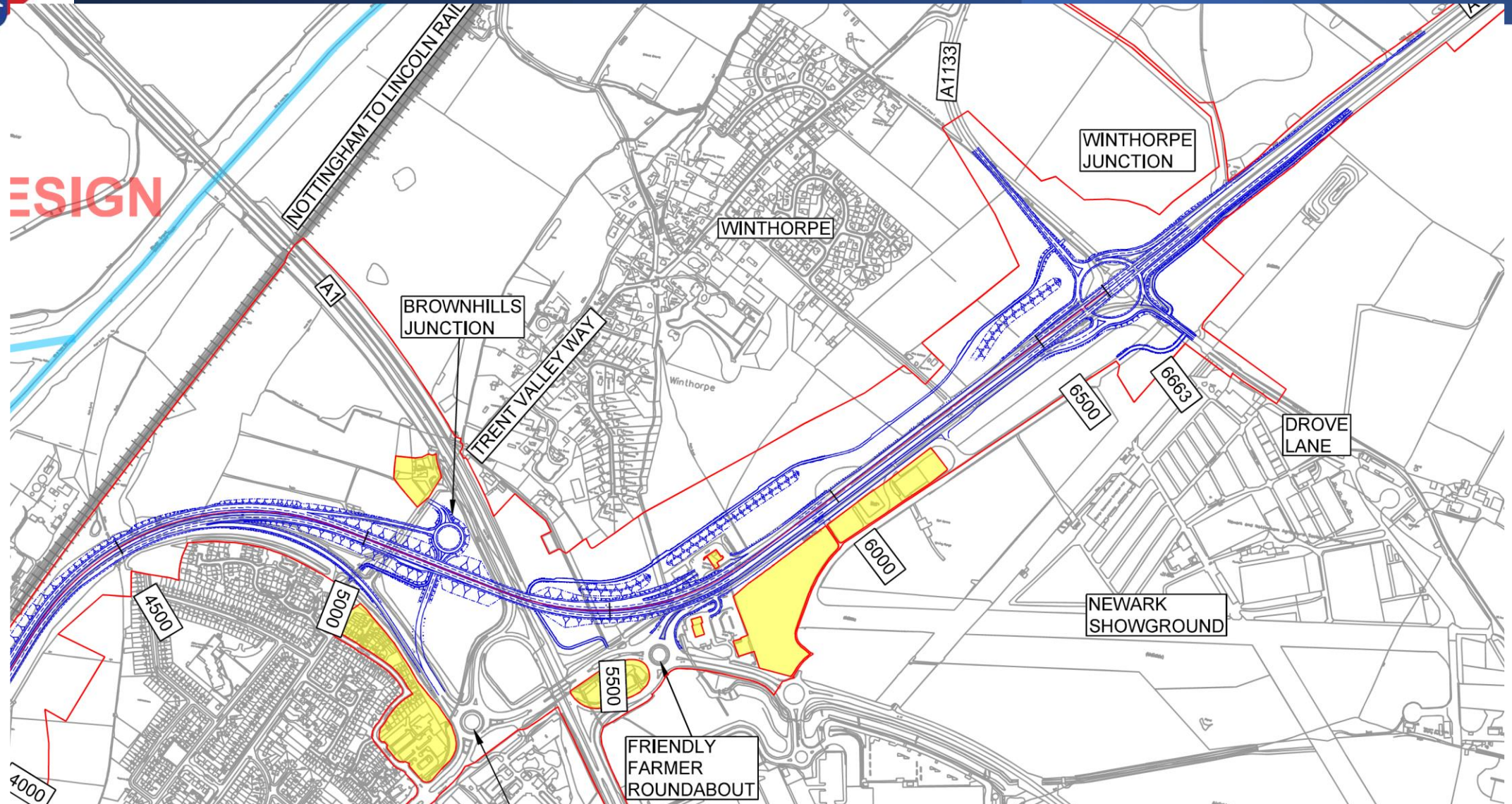
March '22
Preferred option
announced.
OPTION 2 MODIFIED

November '22
**Design Development
Route announced**
**STATUTORY
CONSULTATION**
(closing 12th Dec '22)



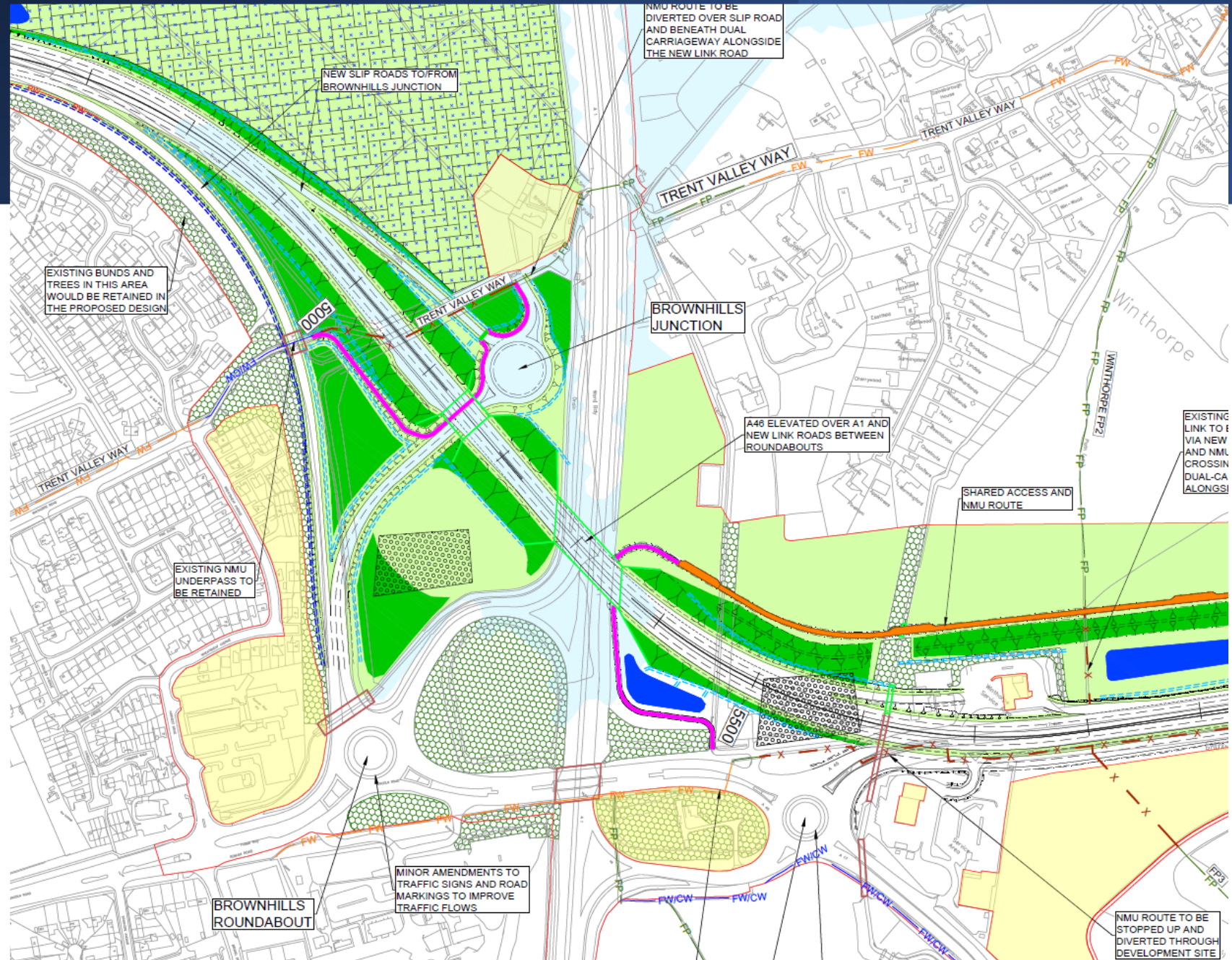


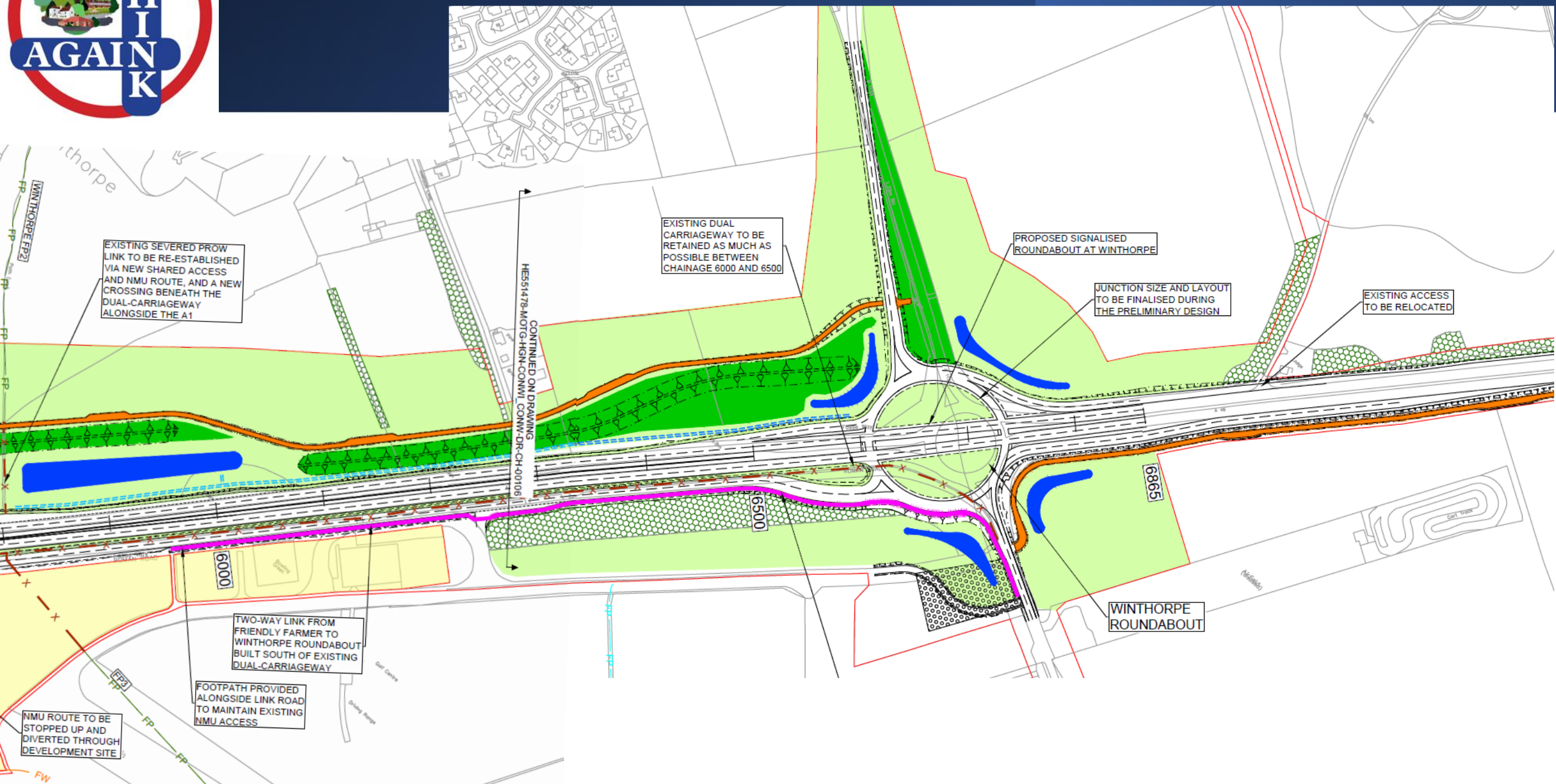
The design development route adopts major aspects of Think Again's Option 3 design:





New layout to Brownhills junction including a secondary roundabout on the A46 slip road







Positive impact of Think Again and improvements in development design over the Preferred Route Announcement

- Realignment of the A1 overbridge to be further from Lowood corner of the village.
- Change to use Newark Showground land for additional local link road with Winthorpe Parkland only being impacted by landscaping and mitigation features.
- Saving both service stations with revised access to the eastbound petrol station.
- Increased active travel opportunities particularly with the combined NMU route alongside the road adjacent to the Winthorpe parkland and potential links to Newark Showground.



Positive impact of Think Again and improvements in development design over the Preferred Route Announcement

- Removal of triple stacked road arrangement and vehicular access to kennels via Winthorpe Road, Newark. Reducing the overall height of the carriageway as a result with the exception of the A1 overbridge.
- Redesign of Winthorpe junction roundabout to reduce congestion and increase flow, with hopefully minimal additional impact on Winthorpe.
- Conversations with Newark Showground regarding improved access arrangements.
- Clear illustrations of roadside mitigation features such as bunding on east side of village.

Issues to be
considered
(Focus for Think
Again campaigning)





Ongoing Concerns and Questions

The Road

Height, speed, pedestrian crossings, Showground traffic management.

Air Quality

Control and mitigation of pollution effects.

→ Further work to reduce overbridge height to lessen polluting impact on Winthorpe.

Cultural Heritage, Landscape and Visual Effects

Visual intrusion and impairment around south Winthorpe, road height, aesthetic design (!), tree and vegetation planting. Views of the village.

→ Push for additional planting, to include medium and large trees to provide visual barriers sooner.

Biodiversity

Habitat loss and pathway severance for animals and birds.



Ongoing Concerns and Questions

Noise and Vibration

Raised road levels will exacerbate the already noisy environment in Winthorpe, mitigation of construction noise, prospect of vibration impact on properties near to the new road.

Population and Human Health

Safety and health issues around re-routed and new walking and cycling routes, health issues of construction related dust and air pollution.

→ Continue working with NH to optimise NMU routes and ensure public safety.

Road Drainage and the Water Environment

Interception and control of road drainage, management of accidental and other spillages, pollutant and flow effects on the Fleet and the Slough Dyke.

→ Seek assurances that flooding considerations are given due attention.

→ Flooding and pollution considerations of The Fleet and Slough Dyke.

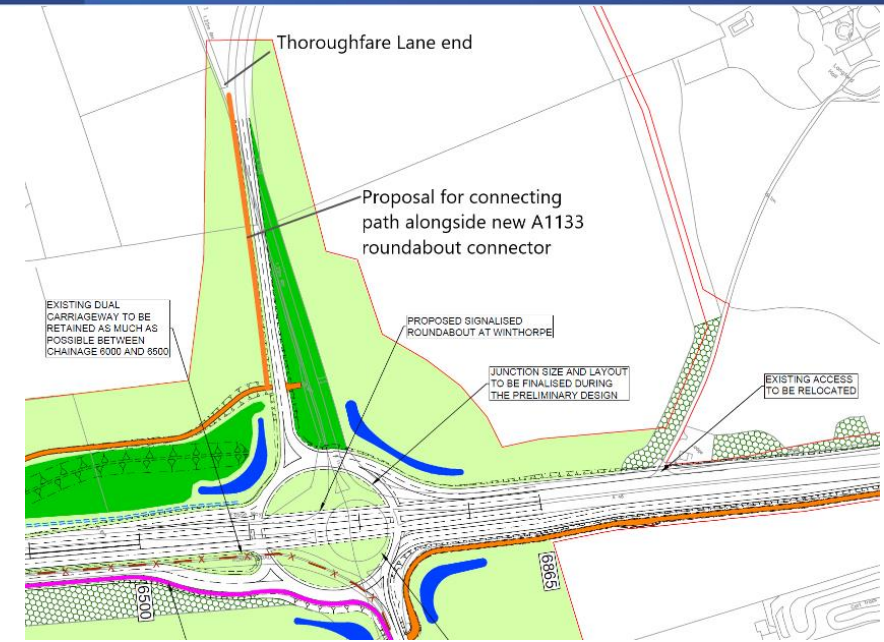
Possible
improvements
being suggested





Potential improvements (things to ask for)

- NMU route connection to Thoroughfare Lane to allow full circular walk of the village to be achieved and route to School.
- Bus stop within the Local Link Road to allow public transport access to Showground.
- Further campaign to confirm 50mph speed limit to reduce noise and air pollution.
- Lowering of Brownhills Junction roundabout to ground level, and consequential lowering of some of the A46 embankment in the Winthorpe/Newark open break.
- Walking and cycling between Friendly Farmer and Winthorpe roundabouts separated from the new roads



YOUR
QUESTIONS on
the routes?



What next?





Statutory Consultation Responses

Please engage with the Consultation

Deadline Monday 12th December 2022

Via National Highways website OR Paper copy

If you need help please contact us via email or phone

A46WinthorpeVillage@outlook.com 07968855448 (Susie)

Let's work together to protect our village.

Let's encourage National Highways to move further with Think Again!

